

LOCALS
1"=200'

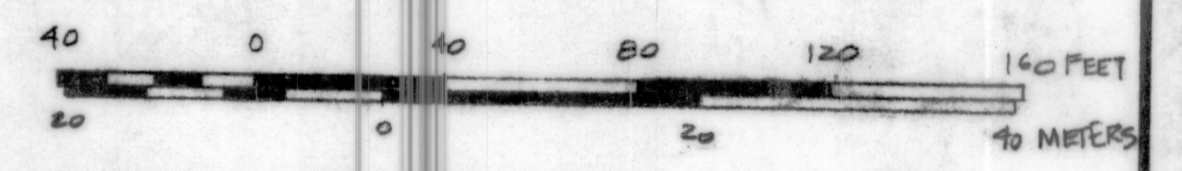
"THE THICKET"
OWNER:
R.A. & G.R. WING
844 NORTH MAIN ROAD
JAMESTOWN, R.I.

FOUR LOT SUBDIVISION
3.36 ACRES
ZONED RR 80
PRELIMINARY FILING DATE

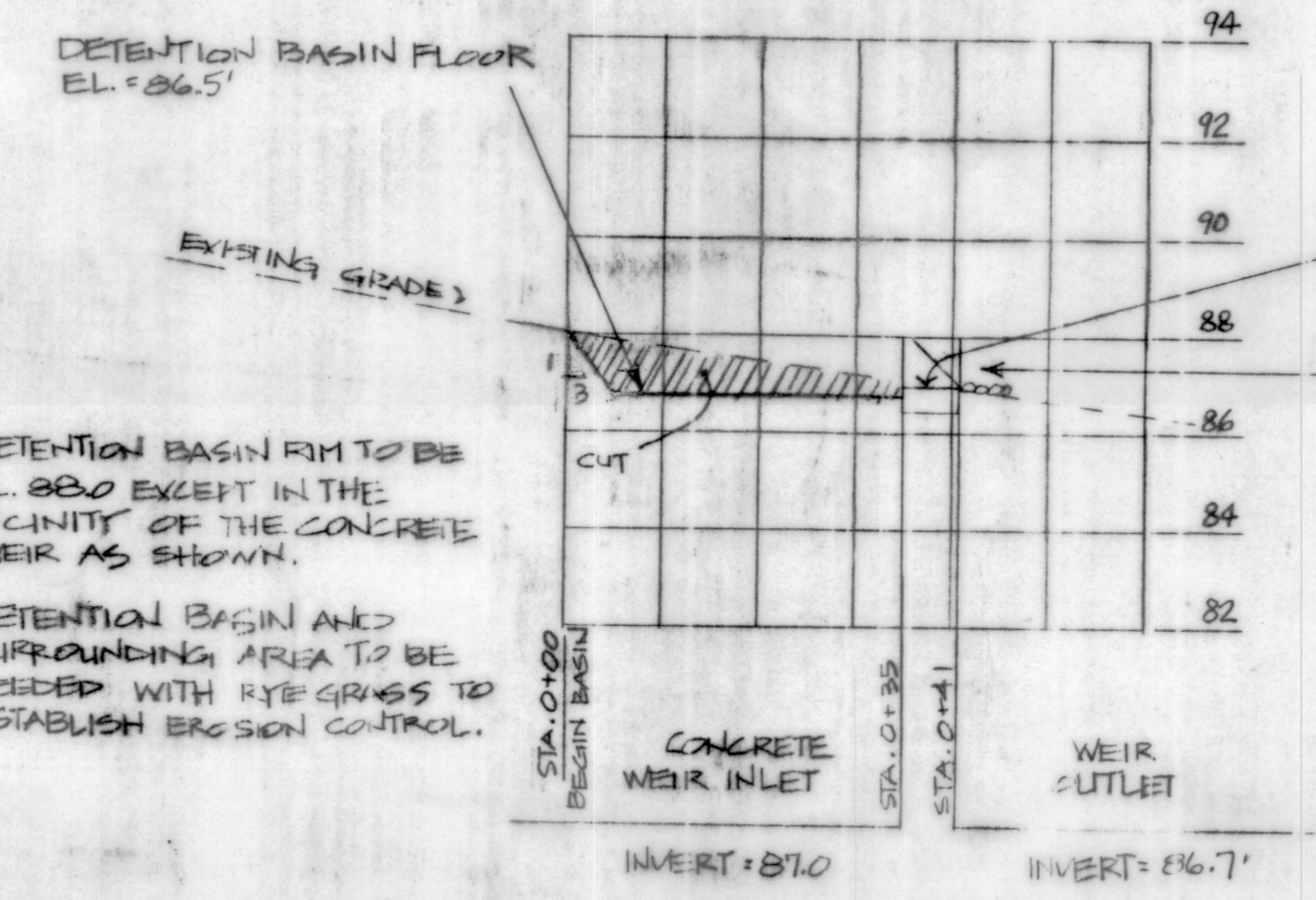
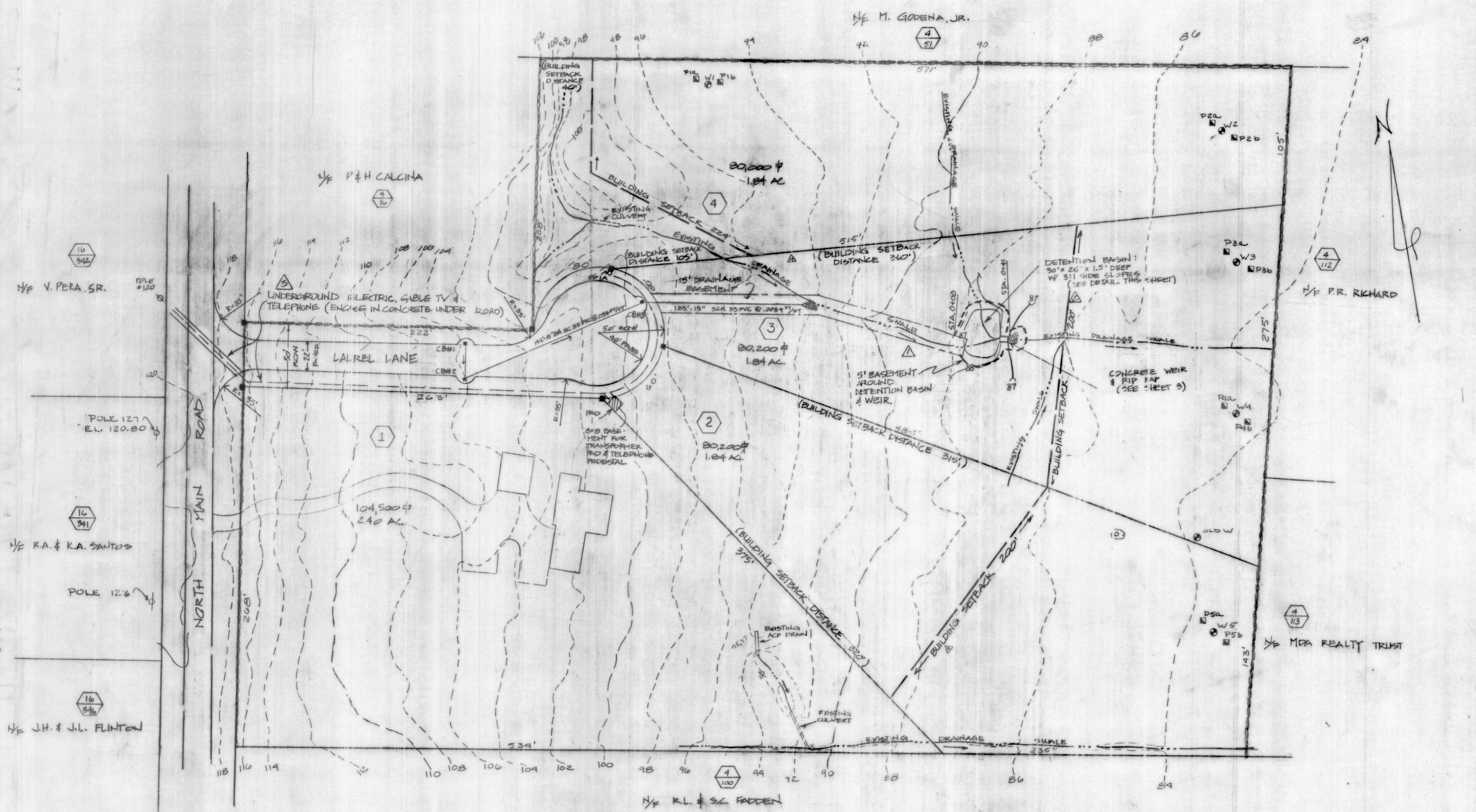
NOTE: LAUREL LANE WILL BE DEDICATED TO THE TOWN OF JAMESTOWN.

LEGEND

- CBM CATCH BASIN
- BOUNDARY MONUMENT
- ⬡ ASSESSOR'S PLAT
- LOT
- SUBDIVISION LOT NUMBER
- NOW OR FORMERLY OF
- GROUND WATER TABLE TEST HOLE
- PERCOLATION TEST HOLE
- ROW RIGHT OF WAY
- ACP ALUMINUM CORRUGATED PIPE
- EXISTING DRAINAGE SWALE



GRAPHIC SCALE



NOTES: 1. DETENTION BASIN FIRM TO BE EL. 88.0 EXCEPT IN THE VICINITY OF THE CONCRETE WEIR AS SHOWN.
2. DETENTION BASIN AND SURROUNDING AREA TO BE SEEDED WITH RYE GRASS TO ESTABLISH EROSION CONTROL.

DISCHARGE WEIR ELEVATION = 86.7' LEAVE .2' TO TRAP SEDIMENT.
CONCRETE WEIR & RIP RAP (SEE SHEET 3)

DETENTION BASIN DETAIL
SCALE: H - 1" = 20', V - 1" = 4'

Best and Keen
10/8/92

RECEIVED FOR RECORD IN JAMESTOWN, R.I.
OCTOBER 9, 1992
TOWN CLERK

NO.	DATE	REVISION	BY
1	5/11/87	INV. CORR. ADD BLD. SETB. EASEMENT	BS
2	4/16/89	ADD UTIL. UTILITIES, CH. RIGOR DETAIL	WFM
3	4/16/89	INCREASE DET. BASIN DEPTH	WFM
4	4/16/89	ADD EASEMENT TO BASIN, ADD CUT	WFM

PROJECT TITLE	PRELIMINARY SITE PLAN NORTH MAIN ROAD AP 4 LOT 104	PROJECT NO.	J01307
SCALE	1" = 40'	DATE	24 OCT. 88
PREPARED FOR	"THE THICKET"	DRAWN BY	HCD
		CHECKED BY	WFM
		DRAWING NO.	88462
ISLAND ENGINEERING 18 Southwest Avenue Jamestown, Rhode Island 02835 (401) 423-1200		1 of 3 SHEETS	