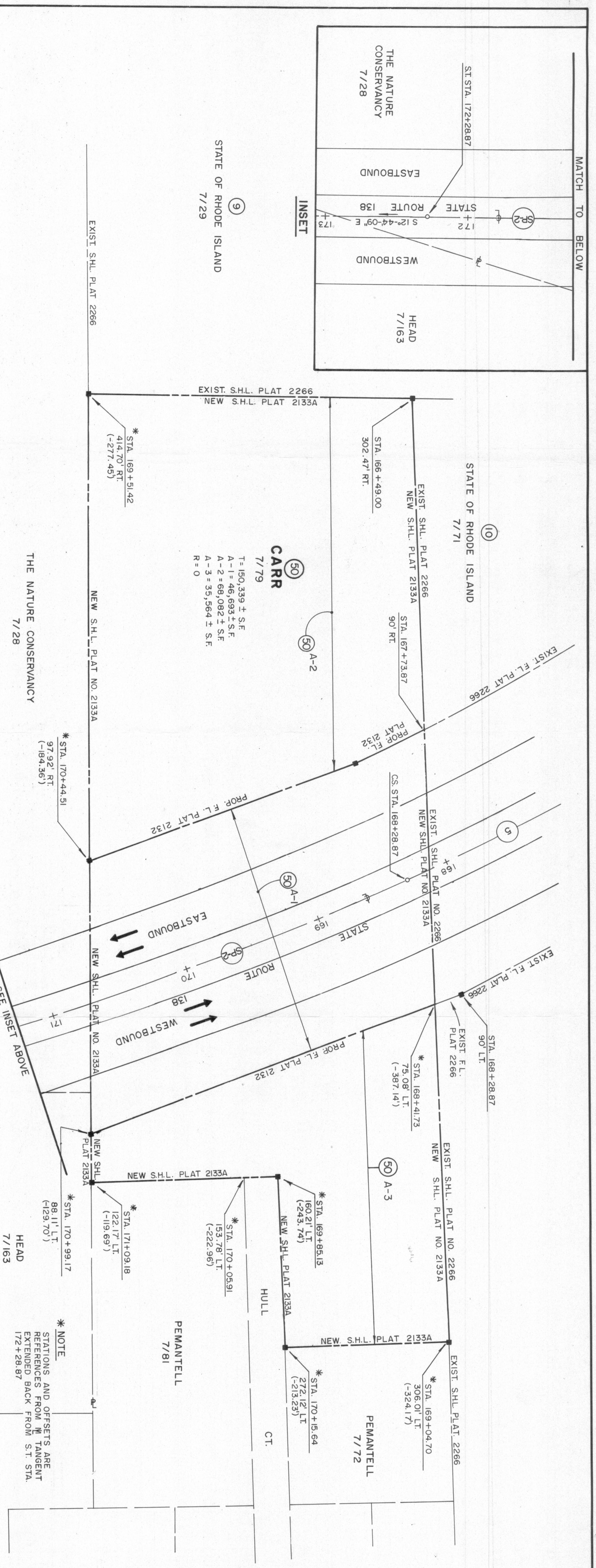


CURVE NO.	RADIUS (FT.)	TANGENT LENGTH (FT.)	ANGLE	ARC LENGTH (FT.)	CP COORDINATES		PI COORDINATES	
					NORTH	EAST	NORTH	EAST
5	1530	985.29	65° 33' 41.8"	1750.73	15964.856	534662.959	161298.339	535757.988

SPIRAL NO.	L <sub>S</sub> (FT.)	S	T <sub>L</sub> (FT.)	T <sub>S</sub> (FT.)	PI COORDINATES	
					NORTH	EAST
SP-2	400	7° 29' 23"	266.91	133.55	160248.484	536144.789

SCALE: 40 FEET PER INCH  
SHEET 3 OF 3  
PLAT NO. 2133A

STATE ROUTE 138 IMPROVEMENTS  
NORTH ROAD TO NEWPORT BRIDGE  
TOLL PLAZA  
INVESTMENT  
BUREAU 101 AMN



**CARR**  
7/79  
T = 150,339 ± S.F.  
A-1 = 46,693 ± S.F.  
A-2 = 68,082 ± S.F.  
A-3 = 35,564 ± S.F.  
R = 0

THE NATURE CONSERVANCY  
7/28

\* NOTE  
STATIONS AND OFFSETS ARE  
REFERENCED FROM THE TANGENT  
EXTENDED BACK FROM S.T. STA.  
172+28.87

SEE INSET ABOVE

EXIST. S.H.L. PLAT 2266

EXIST. S.H.L. PLAT 2266  
NEW S.H.L. PLAT 2133A

NEW S.H.L. PLAT NO. 2133A

NEW S.H.L. PLAT NO. 2133A

NEW S.H.L. PLAT 2133A

NEW S.H.L. PLAT 2133A

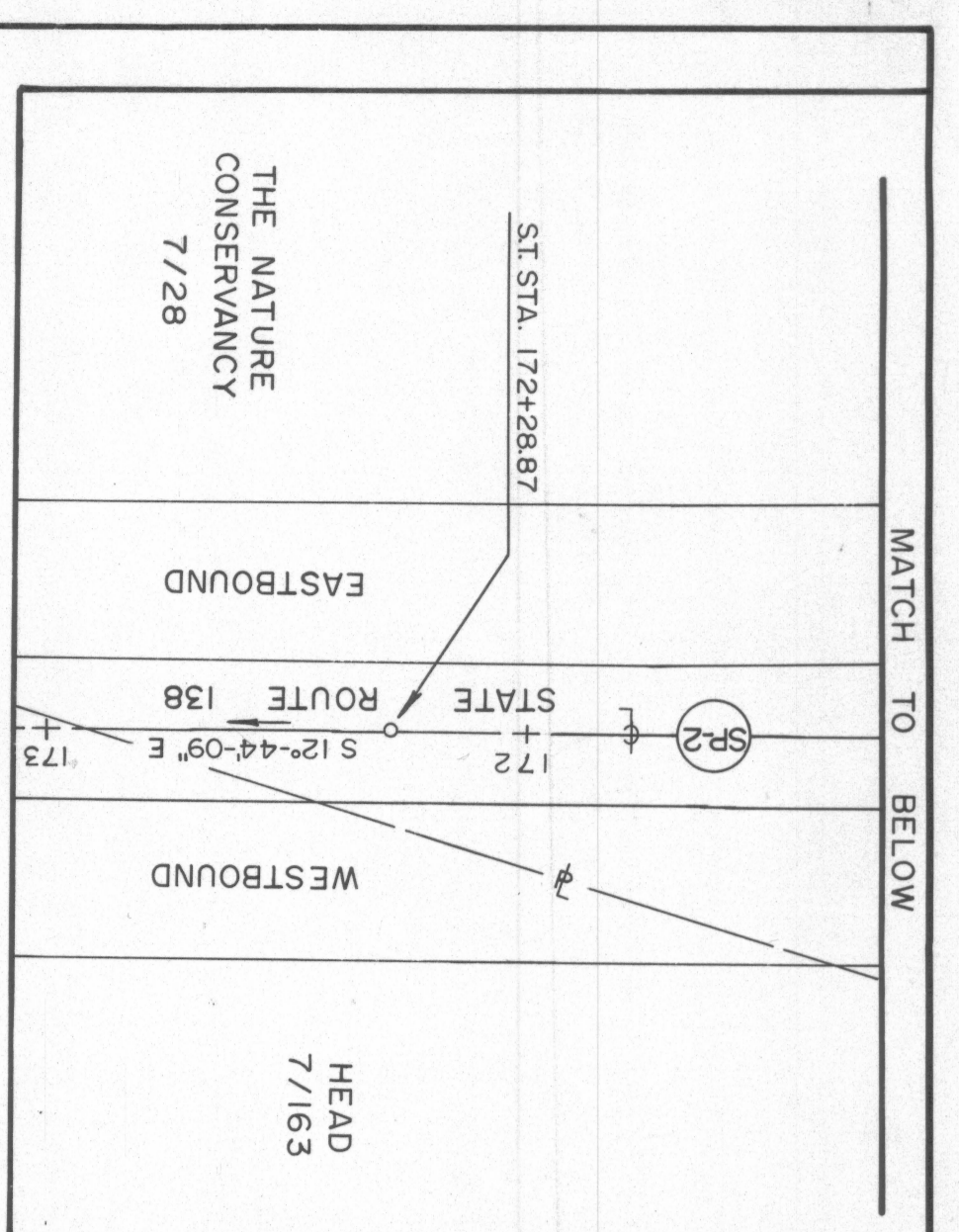
NEW S.H.L. PLAT 2133A

NEW S.H.L. PLAT 2133A

NEW S.H.L. PLAT 2133A

NEW S.H.L. PLAT 2133A

INSET



MATCH TO BELOW

STATE OF RHODE ISLAND  
7/71

5

SP-2

50 A-3

PEMANTELL  
7/72

PEMANTELL  
7/81

HULL  
CT.

HEAD  
7/163

HEAD  
7/163

HEAD  
7/163

EXIST. S.H.L. PLAT 2266  
NEW S.H.L. PLAT 2133A

EXIST. S.H.L. PLAT NO. 2266  
NEW S.H.L. PLAT NO. 2133A

EXIST. S.H.L. PLAT NO. 2266  
NEW S.H.L. PLAT NO. 2133A

EXIST. S.H.L. PLAT 2266  
NEW S.H.L. PLAT 2133A

EXIST. S.H.L. PLAT 2266  
NEW S.H.L. PLAT 2133A

EXIST. S.H.L. PLAT 2266  
NEW S.H.L. PLAT 2133A

EXIST. S.H.L. PLAT 2266  
NEW S.H.L. PLAT 2133A

STA. 166+49.00  
302.47' RT.

STA. 167+73.87  
90' RT.

CS. STA. 168+28.87

STA. 168+41.73  
75.08' LT.  
(-387.14)

STA. 169+04.70  
306.01' LT.  
(-324.17)

STA. 169+65.13  
160.21' LT.  
(-243.74)

STA. 170+05.91  
153.78' LT.  
(-222.96)

50 A-2

50 A-1

50 A-3

50 A-3

50 A-3

50 A-3

50 A-3

50 A-3

50 A-3

50

50

50

50

50

50

50

50

50

50

50

50

50

50

50

50

50

50

50

STATE OF RHODE ISLAND  
7/29

STATE OF RHODE ISLAND  
7/71

STATE OF RHODE ISLAND  
7/71

STATE OF RHODE ISLAND  
7/71

STATE OF RHODE ISLAND  
7/71

STATE OF RHODE ISLAND  
7/71

STATE OF RHODE ISLAND  
7/71

STATE OF RHODE ISLAND  
7/71

EXIST. S.H.L. PLAT 2266

NEW S.H.L. PLAT NO. 2133A

NEW S.H.L. PLAT NO. 2133A

NEW S.H.L. PLAT 2133A

NEW S.H.L. PLAT 2133A

NEW S.H.L. PLAT 2133A

NEW S.H.L. PLAT 2133A

NEW S.H.L. PLAT 2133A

NEW S.H.L. PLAT 2133A

NEW S.H.L. PLAT 2133A

THE NATURE CONSERVANCY  
7/28

THE NATURE CONSERVANCY  
7/28

THE NATURE CONSERVANCY  
7/28

THE NATURE CONSERVANCY  
7/28

THE NATURE CONSERVANCY  
7/28

THE NATURE CONSERVANCY  
7/28

THE NATURE CONSERVANCY  
7/28

THE NATURE CONSERVANCY  
7/28

THE NATURE CONSERVANCY  
7/28

THE NATURE CONSERVANCY  
7/28

THE NATURE CONSERVANCY  
7/28

THE NATURE CONSERVANCY  
7/28

THE NATURE CONSERVANCY  
7/28

THE NATURE CONSERVANCY  
7/28

THE NATURE CONSERVANCY  
7/28

THE NATURE CONSERVANCY  
7/28

EXIST. S.H.L. PLAT 2266

NEW S.H.L. PLAT NO. 2133A

NEW S.H.L. PLAT NO. 2133A

NEW S.H.L. PLAT 2133A

NEW S.H.L. PLAT 2133A

NEW S.H.L. PLAT 2133A

NEW S.H.L. PLAT 2133A

NEW S.H.L. PLAT 2133A

NEW S.H.L. PLAT 2133A

NEW S.H.L. PLAT 2133A

THE NATURE CONSERVANCY  
7/28

THE NATURE CONSERVANCY  
7/28

THE NATURE CONSERVANCY  
7/28

THE NATURE CONSERVANCY  
7/28

THE NATURE CONSERVANCY  
7/28

THE NATURE CONSERVANCY  
7/28

THE NATURE CONSERVANCY  
7/28

THE NATURE CONSERVANCY  
7/28

THE NATURE CONSERVANCY  
7/28

THE NATURE CONSERVANCY  
7/28

THE NATURE CONSERVANCY  
7/28

THE NATURE CONSERVANCY  
7/28

THE NATURE CONSERVANCY  
7/28

THE NATURE CONSERVANCY  
7/28

THE NATURE CONSERVANCY  
7/28

THE NATURE CONSERVANCY  
7/28

EXIST. S.H.L. PLAT 2266

NEW S.H.L. PLAT NO. 2133A

NEW S.H.L. PLAT NO. 2133A

NEW S.H.L. PLAT 2133A

NEW S.H.L. PLAT 2133A

NEW S.H.L. PLAT 2133A

NEW S.H.L. PLAT 2133A

NEW S.H.L. PLAT 2133A

NEW S.H.L. PLAT 2133A

NEW S.H.L. PLAT 2133A

THE NATURE CONSERVANCY  
7/28

THE NATURE CONSERVANCY  
7/28

THE NATURE CONSERVANCY  
7/28

THE NATURE CONSERVANCY  
7/28

THE NATURE CONSERVANCY  
7/28

THE NATURE CONSERVANCY  
7/28

THE NATURE CONSERVANCY  
7/28

THE NATURE CONSERVANCY  
7/28

THE NATURE CONSERVANCY  
7/28

THE NATURE CONSERVANCY  
7/28

THE NATURE CONSERVANCY  
7/28

THE NATURE CONSERVANCY  
7/28

THE NATURE CONSERVANCY  
7/28

THE NATURE CONSERVANCY  
7/28

THE NATURE CONSERVANCY  
7/28

THE NATURE CONSERVANCY  
7/28

EXIST. S.H.L. PLAT 2266

NEW S.H.L. PLAT NO. 2133A

NEW S.H.L. PLAT NO. 2133A

NEW S.H.L. PLAT 2133A

NEW S.H.L. PLAT 2133A

NEW S.H.L. PLAT 2133A

NEW S.H.L. PLAT 2133A

NEW S.H.L. PLAT 2133A

NEW S.H.L. PLAT 2133A

NEW S.H.L. PLAT 2133A

THE NATURE CONSERVANCY  
7/28

THE NATURE CONSERVANCY  
7/28

THE NATURE CONSERVANCY  
7/28

THE NATURE CONSERVANCY  
7/28

THE NATURE CONSERVANCY  
7/28

THE NATURE CONSERVANCY  
7/28

THE NATURE CONSERVANCY  
7/28

THE NATURE CONSERVANCY  
7/28

THE NATURE CONSERVANCY  
7/28

THE NATURE CONSERVANCY  
7/28

THE NATURE CONSERVANCY  
7/28

THE NATURE CONSERVANCY  
7/28

THE NATURE CONSERVANCY  
7/28

THE NATURE CONSERVANCY  
7/28

THE NATURE CONSERVANCY  
7/28

THE NATURE CONSERVANCY  
7/28

EXIST. S.H.L. PLAT 2266

NEW S.H.L. PLAT NO. 2133A

NEW S.H.L. PLAT NO. 2133A

NEW S.H.L. PLAT 2133A

NEW S.H.L. PLAT 2133A

NEW S.H.L. PLAT 2133A

NEW S.H.L. PLAT 2133A

NEW S.H.L. PLAT 2133A

NEW S.H.L. PLAT 2133A

NEW S.H.L. PLAT 2133A

THE NATURE CONSERVANCY  
7/28

THE NATURE CONSERVANCY  
7/28

THE NATURE CONSERVANCY  
7/28

THE NATURE CONSERVANCY  
7/28

THE NATURE CONSERVANCY  
7/28

THE NATURE CONSERVANCY  
7/28

THE NATURE CONSERVANCY  
7/28

THE NATURE CONSERVANCY  
7/28

THE NATURE CONSERVANCY  
7/28

THE NATURE CONSERVANCY  
7/28

THE NATURE CONSERVANCY  
7/28

THE NATURE CONSERVANCY  
7/28

THE NATURE CONSERVANCY  
7/28

THE NATURE CONSERVANCY  
7/28

THE NATURE CONSERVANCY  
7/28

THE NATURE CONSERVANCY  
7/28

EXIST. S.H.L. PLAT 2266

NEW S.H.L. PLAT NO. 2133A

NEW S.H.L. PLAT NO. 2133A

NEW S.H.L. PLAT 2133A

NEW S.H.L. PLAT 2133A

NEW S.H.L. PLAT 2133A

NEW S.H.L. PLAT 2133A

NEW S.H.L. PLAT 2133A

NEW S.H.L. PLAT 2133A

NEW S.H.L. PLAT 2133A

THE NATURE CONSERVANCY  
7/28

THE NATURE CONSERVANCY  
7/28

THE NATURE CONSERVANCY  
7/28

THE NATURE CONSERVANCY  
7/28

THE NATURE CONSERVANCY  
7/28

THE NATURE CONSERVANCY  
7/28

THE NATURE CONSERVANCY  
7/28