

(83) STATE OF RHODE ISLAND
14/405

T=11,265 S.F.
A=7,903 S.F.
R=3,362 S.F.
B=440 S.F.

(86) CYRIL B. JOYNER
14/403

T=28,770 S.F.
A=403 S.F.
R=28,367 S.F.
B=520 S.F.

(102) JOHN DISANDRO
14/46

T=32,800 S.F.
R=10 S.F.

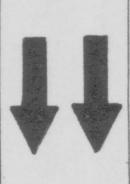
(85) CYRIL B. JOYNER
14/411

T=13,760 S.F.
A=1,244 S.F.
R=12,516 S.F.
B=400 S.F.

(84) STATE OF RHODE ISLAND
14/404

T=11,685 S.F.
A=2,522 S.F.
R=9,163 S.F.
B=480 S.F.
C=-2,920 S.F. (DISCONTINUED PLAT 2120 B)

EASTBOUND



STA. 119 + 93.20, 91.35' RT
STA. 120 + 50.112 RT
STA. 120 + 50.92' RT
PT. STA. 16 + 68.99

PC STA. 14 + 73.73

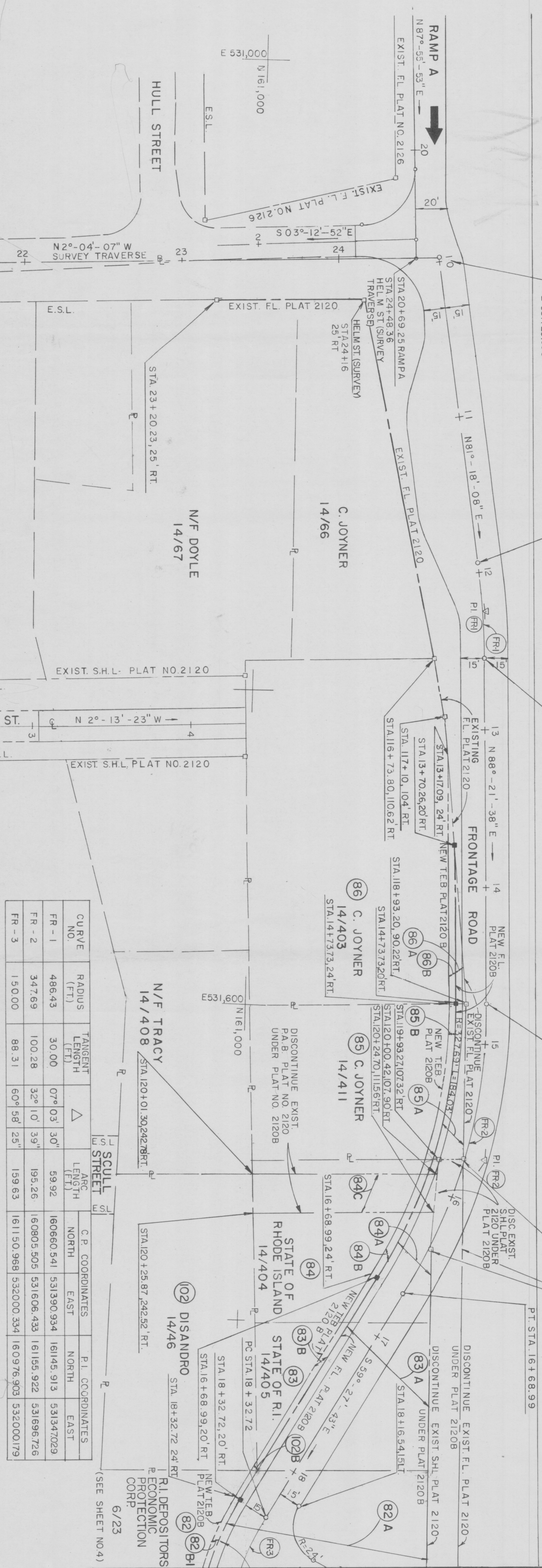
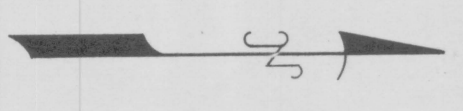
PT STA. 12 + 54.17

FRONTAGE ROAD STA. 9 + 198.21
HELM ST. SURVEY TRAVERSE
STA. 24 + 62.58
N 61° 11' 73.0"
E 531123.990

EXISTING ELDRED AVENUE

BASELINE ROUTE 138

113
114
115
116
117
118
119
120
121
122



CURVE NO.	RADIUS (FT.)	TANGENT LENGTH (FT.)	Δ	ARC LENGTH (FT.)	C.P. COORDINATES		P.I. COORDINATES	
					NORTH	EAST	NORTH	EAST
FR - 1	486.43	30.00	07° 03' 30"	59.92	160660.541	531390.934	16145.913	531347.029
FR - 2	347.69	100.28	32° 10' 39"	195.26	160805.505	531606.433	161155.922	531696.726
FR - 3	150.00	88.31	60° 58' 25"	159.63	161150.968	532000.334	160976.903	532000.179

STATE ROUTE 138 IMPROVEMENTS
FROM JAMESTOWN BRIDGE TO NORTH ROAD
JAMESTOWN
RHODE ISLAND

SHEET 3 OF 5
PLAT NO. 2120B

SCALE: 40 FEET PER INCH