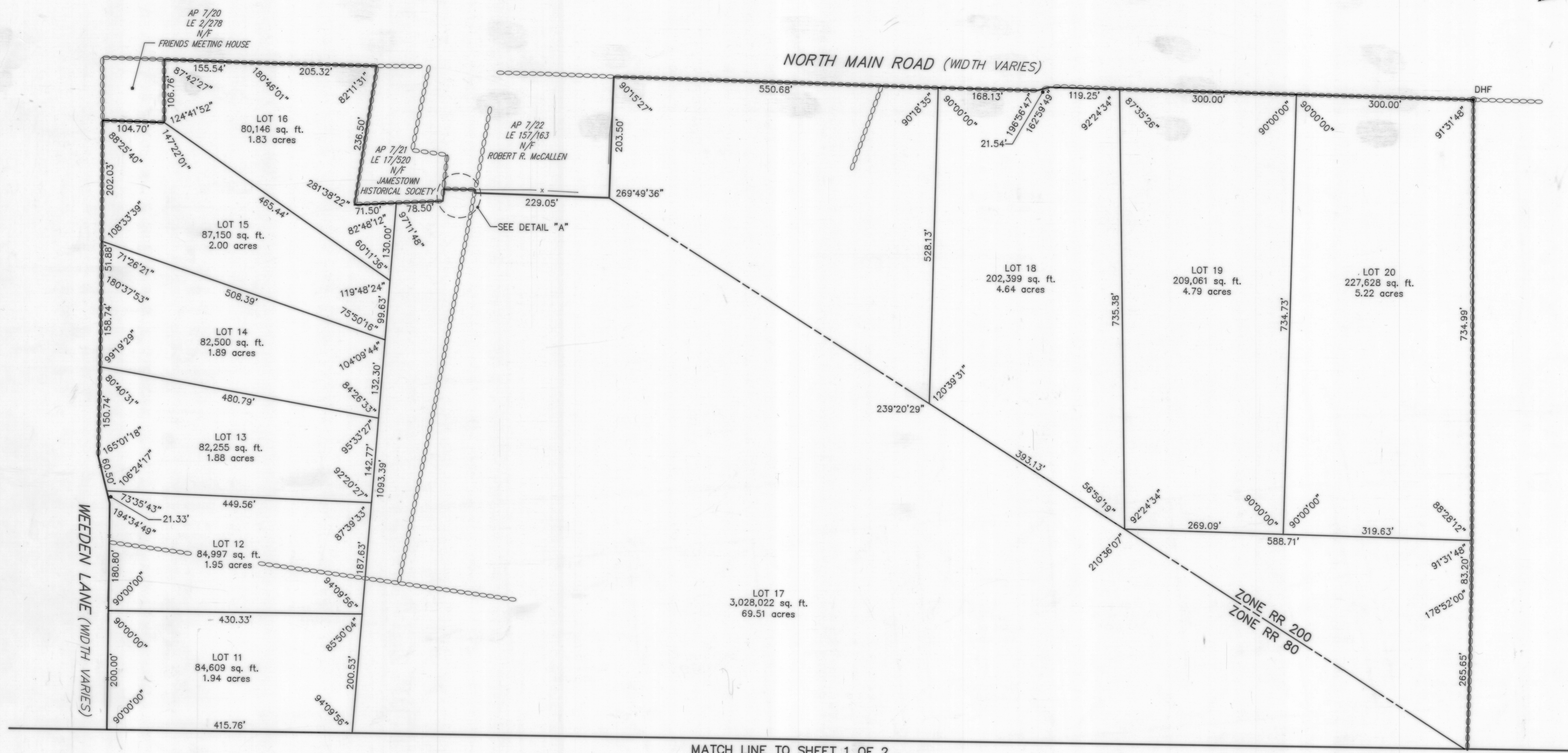
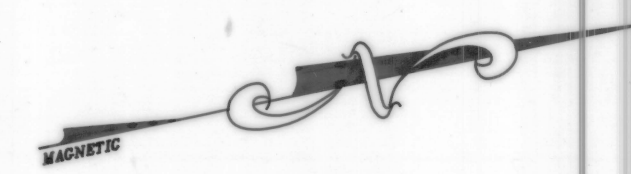
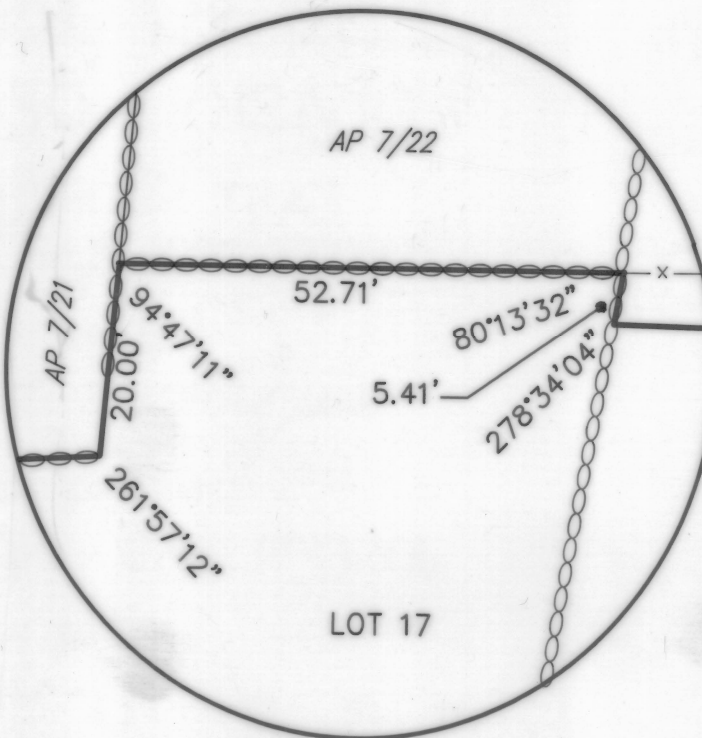


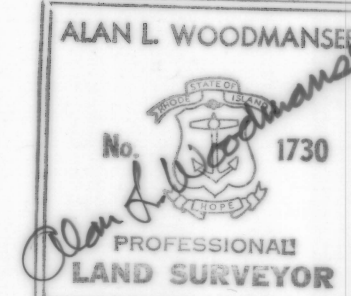
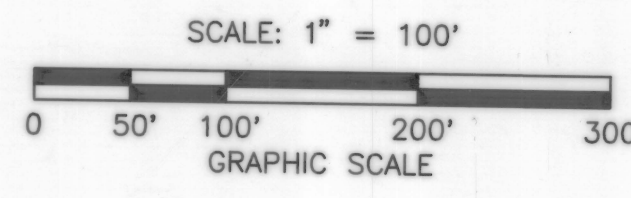
282DWB.DWG



MATCH LINE TO SHEET 1 OF 2



DETAIL "A"
SCALE: 1"=20'



DIVISION OF LAND
EAST SHORE ROAD
 ASSESSOR'S PLAT 7, LOT 19
 SITUATED IN
 JAMESTOWN, RHODE ISLAND
 PREPARED FOR
JOSEPH AND ANITA DUTRA

PREPARED BY
JOHN P. CAITO CORPORATION
 ENGINEERS • LANDSCAPE ARCHITECTS • PLANNERS
 35 QUAKER LANE
 WEST WARWICK, RHODE ISLAND 02893-2119
 (401) 821-6444 FAX (401) 821-6155

RECEIVED FOR RECORD IN JAMESTOWN, R.I.
 February 21, 1992 at 2:35 p.m.
John Almon TOWN CLERK

DECEMBER, 1991