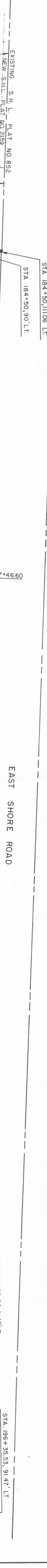


CURVE NO.	RADIUS (FT)	TANGENT LENGTH (FT)	ANGLE	ARC LENGTH (FT)	CP COORDINATES	PI COORDINATES
6	2350	350.90	16° 59' 6.3"	696.65	NORTH 158669.192 EAST 534092.460	NORTH 158845.000 EAST 536462.000

DEPARTMENT OF TRANSPORTATION  
DIVISION OF PUBLIC WORKS



EXISTING S.H.L. PLAT NO. 2159  
NEW S.H.L. PLAT NO. 2159  
NEW F.L. PLAT NO. 2159  
R = 2440.00'

STA 184+50,111.06' LT.  
STA 184+50,90' LT.  
STA 187+46.60  
PT STA 187+46.60  
EXISTING STATE HIGHWAY LINE - PLAT 892  
NEW F.L. PLAT NO. 2159

EAST SHORE ROAD  
STATE ROUTE 138  
WESTBOUND  
EASTBOUND

NEW F.L. PLAT NO. 2159  
PLAT NO. 2159  
PLAT NO. 2159  
PLAT NO. 2133  
PLAT NO. 2132

DISCONTINUE S.H.L. PLAT 2133 UNDER NEW PLAT 2159  
EXIST. S.H.L. PLAT 2133  
DISCONTINUE S.H.L. PLAT 2132 UNDER NEW PLAT 2159  
EXISTING S.H.L. PLAT 2132

STATE OF R.I. 7/75  
STATE OF R.I.  
STATE ROUTE 138 IMPROVEMENTS  
NORTH ROAD TO NEWPORT BRIDGE  
TOLL PLAZA  
JAMESTOWN, RHODE ISLAND

STA. 194+85.20, 91.47' LT.  
STA. 196+00.20, 91.47' LT.  
STA. 196+35.53, 91.47' LT.  
STA. 194+69.23, 97.81 RT.  
STA. 194+67.05  
STA. 194+82.96  
STA. 194+62' RT.  
STA. 194+82.96  
STA. 194+72.15, 131.07' RT.  
STA. 193+00.90' RT.

NEW F.L. PLAT NO. 2159  
NEW F.L. PLAT NO. 2159  
NEW F.L. PLAT NO. 2159  
NEW F.L. PLAT NO. 2159  
NEW F.L. PLAT NO. 2159

52 DUTRA 7/198  
T=80,560 ± S.F.  
A-1=39,040 ± S.F.  
A-2=30,434 ± S.F.  
A-3=11,086 ± S.F.  
R=0

53 A-3  
53 A-2  
53 A-1  
53 A-1  
53 A-2  
53 A-3

54 DUTRA 7/199  
T=80,560 ± S.F.  
A-1=40,300 ± S.F.  
A-2=38,214 ± S.F.  
A-3=2,046 ± S.F.  
R=0

54 A-2  
54 A-2  
54 A-2  
54 A-3

55 DUTRA 7/199  
T=85,365 ± S.F.  
A-1=41,084 ± S.F.  
A-2=44,281 ± S.F.  
R=0

55 A-2  
55 A-1  
55 A-1  
55 A-1  
55 A-2

56 DUTRA 7/201  
T=85,365 ± S.F.  
A-1=40,698 ± S.F.  
A-2=44,667 ± S.F.  
R=0

56 A-2  
56 A-1  
56 A-1  
56 A-1  
56 A-2

57 DUTRA 7/203  
T=86,544 ± S.F.  
A-1=37,730 ± S.F.  
A-2=48,914 ± S.F.  
R=0

57 A-2  
57 A-1  
57 A-1  
57 A-1  
57 A-2

SCALE: 40 FEET PER INCH  
SHEET 4 OF 6  
PLAT. NO. 2159

