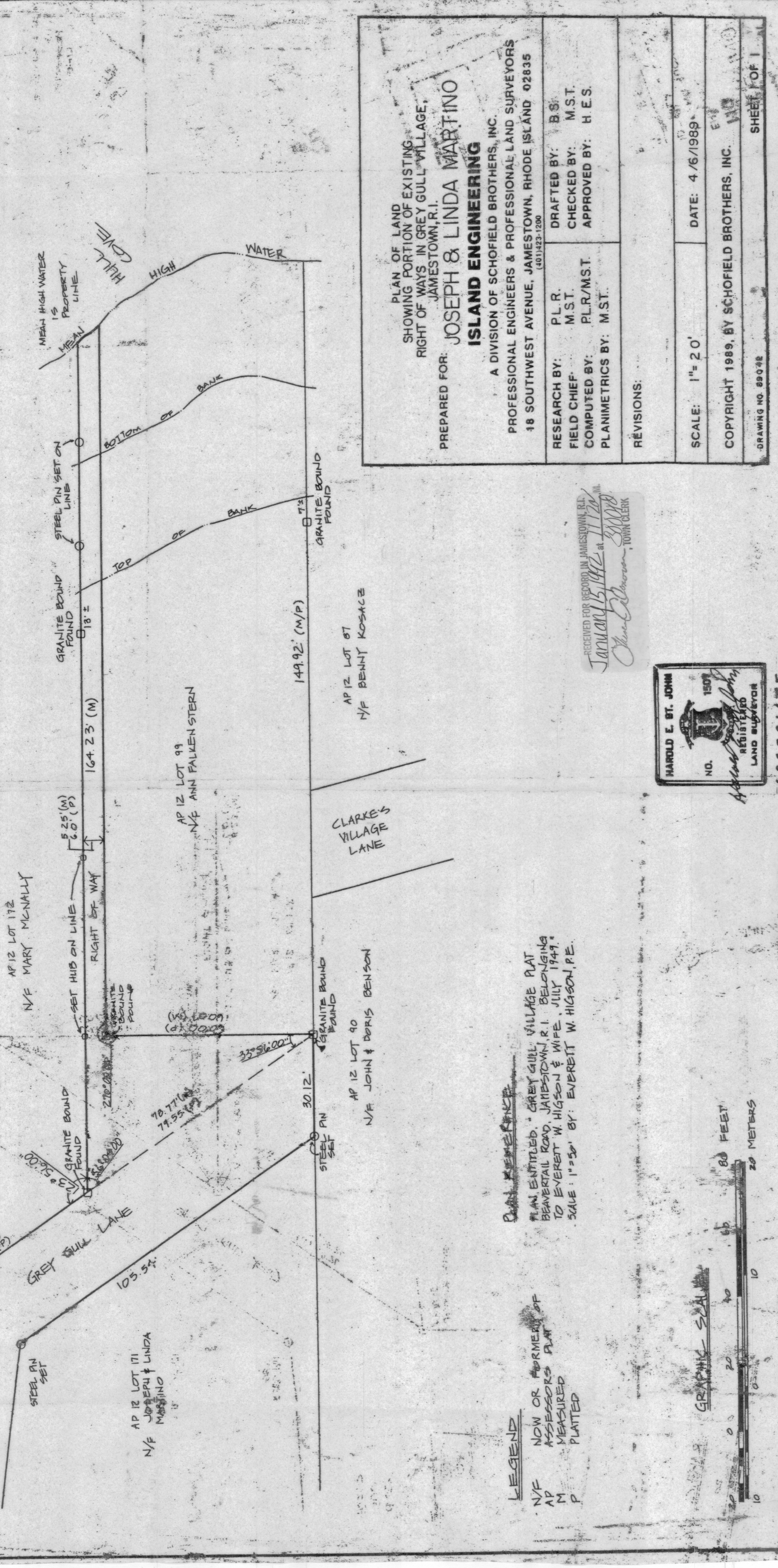


US 1 & 65 - NARRAGANSETT PIER QUAD



PLAN OF LAND SHOWING PORTION OF EXISTING RIGHT OF WAY IN GREY GULL VILLAGE, JAMESTOWN, R.I.

PREPARED FOR: **JOSEPH & LINDA MARTINO**

ISLAND ENGINEERING
A DIVISION OF SCHOFIELD BROTHERS, INC.
PROFESSIONAL ENGINEERS & PROFESSIONAL LAND SURVEYORS
18 SOUTHWEST AVENUE, JAMESTOWN, RHODE ISLAND 02835
(401) 423-1200

RESEARCH BY: P.L.R.
FIELD CHIEF: M.S.T.
COMPUTED BY: P.L.R./M.S.T.
PLANIMETRICS BY: M.S.T.

DRAFTED BY: B.S.
CHECKED BY: M.S.T.
APPROVED BY: H.E.S.

REVISIONS:

SCALE: 1" = 20'

DATE: 4/6/1989

COPYRIGHT 1989, BY SCHOFIELD BROTHERS, INC.

DRAWING NO. 88078

SHEET OF 1

RECORDED FOR RECORD IN JAMESTOWN, R.I.
JANUARY 15 1989
TOWN CLERK



ASSOCIATE

PLAN ENTITLED "GREY GULL VILLAGE PLAT BEAVERTAIL ROAD, JAMESTOWN, R.I. BELONGING TO EVERETT W. HIGSON & WIFE, JULY 1947. SCALE: 1" = 50'. BY: EVERETT W. HIGSON, P.E.

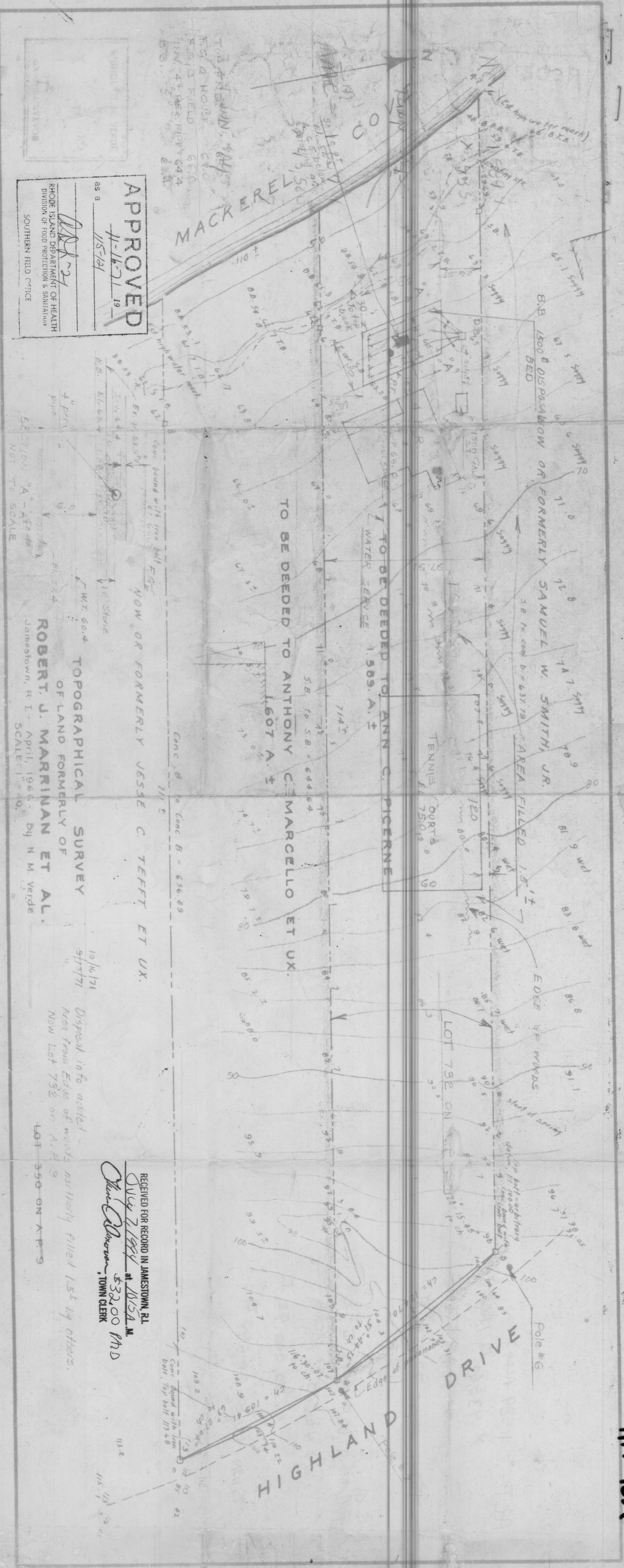
LEGEND:
N/E NOW OR FORMERLY OF ASSURERS PLAT RECORDED & PLATTED



APPROVED
11-17-1989
1/25/89

TOPOGRAPHICAL SURVEY OF LAND FORMERLY OF ROBERT J. MARRINAN ET AL. JAMESTOWN, R.I. April 1964. by H. M. Verde SCALE: 1" = 40'

RECORDED FOR RECORD IN JAMESTOWN, R.I.
MAY 27 1989
TOWN CLERK



HPF 96A