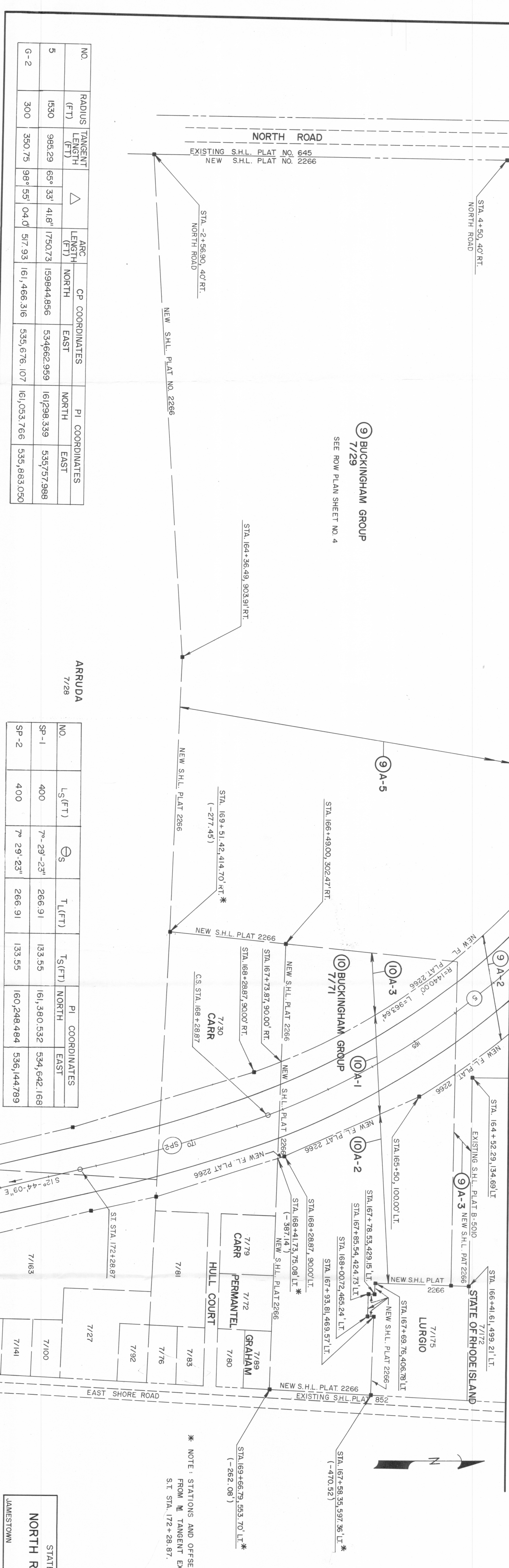


MATCH LINE TO SHEET 4



⑩ BUCKINGHAM GROUP
7/71

T = 6.66 ± AC.
A-1 = 74,800 ± S.F.
A-2 = 170,962 ± S.F.
A-3 = 44,282 ± S.F.
R = 0

* NOTE: STATIONS AND OFFSETS ARE REFERENCED FROM TANGENT EXTENDED BACK FROM S.T. STA. 172+28.87.

NO.	RADIUS (FT)	TANGENT LENGTH (FT)	ANGLE	ARC LENGTH (FT)		CP COORDINATES		PI COORDINATES	
				NORTH	EAST	NORTH	EAST		
5	1530	985.29	65° 33'	1750.73	159844.856	534662.959	161298.339	535757.998	
G-2	300	350.75	98° 55'	517.93	161,466.316	535,676.107	161,053.766	535,883.050	

ARRUDA
7/28

NO.	L _S (FT)	ΔS	T _L (FT)	T _S (FT)	PI COORDINATES	
					NORTH	EAST
SP-1	400	7°-29'-23"	266.91	133.55	161,380.532	534,642.168
SP-2	400	7°-29'-23"	266.91	133.55	160,248.484	536,144.789

SCALE: 100 FEET PER INCH
SHEET 5 OF 5
PLAT NO. 2266

STATE ROUTE 138 IMPROVEMENTS
NORTH ROAD TO NEWPORT BRIDGE
TOLL PLAZA
JAMESTOWN
RHODE ISLAND