

25 ASHNESS & TOWN
OF JAMESTOWN

30 PELLEY
7/59

T=5,750±SF
A=6,750±SF
R=0

T=6,000±SF
A=6,000±SF
R=0

26 GOULART
7/95

T=8,614±SF
A=3,107±SF
R=5,507±SF
B=1,198±SF

31 PELLEY
7/58

T=6,000±SF
A=6,000±SF
R=0

27 REMICK
7/12

T=5,700±SF
A=5,700±SF
R=0

32 PELLEY
7/57

T=6,000±SF
A=6,000±SF
R=0

28 REMICK
7/56

T=4,560±SF
A=4,560±SF
R=0

33 PELLEY
7/10

T=6,750±SF
A=6,750±SF
R=0

29 ZEEK
7/11

T=38,875±SF
A=7,872±SF
R=31,003±SF
B-1=2,580±SF
B-2=603±SF
G=101±SF

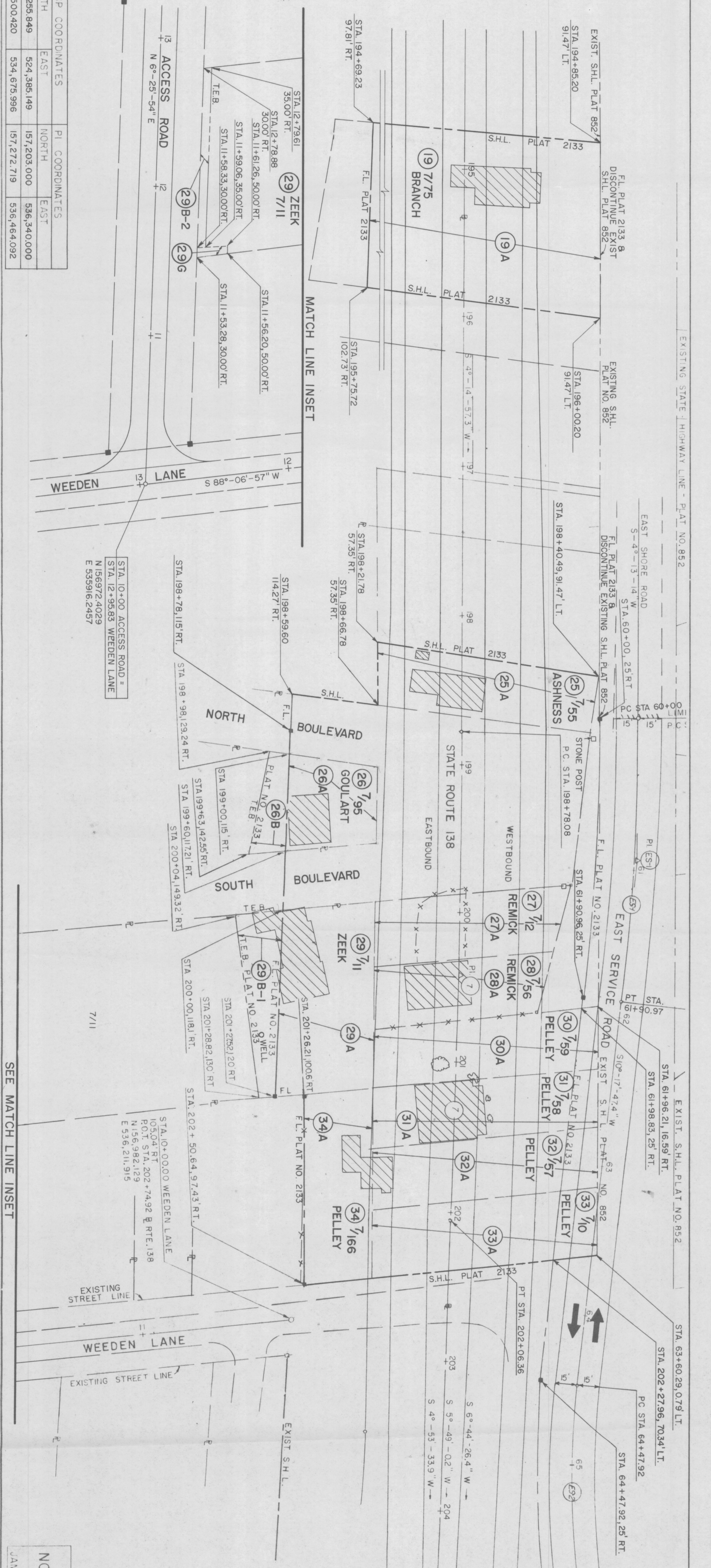
34 PELLEY
7/166

T=4,800±SF
A=4,800±SF
R=0

19 BRANCH
7/75

T=23,875±SF
A=21,284±SF
R=2,591±SF

CURVE NO	RADIUS (FT)	TANGENT LENGTH (FT)	Δ	CP COORDINATES		PL COORDINATES	
				NORTH	EAST	NORTH	EAST
7	12,000	164.16	1° 34' 2.3"	328.29	524,385.149	157,203.000	536,340.000
ES-1	1,800	95.57	6° 04' 43.4"	190.97	534,675.996	157,272.719	536,464.092



RHODE ISLAND
DEPARTMENT OF TRANSPORTATION
DIVISION OF PUBLIC WORKS



SCALE: 1" = 40'
SHEET 6 OF 6
PLAT NO. 2133

STATE ROUTE 138 IMPROVEMENTS
NORTH ROAD TO NEWPORT BRIDGE
TOLL PLAZA
JAMESTOWN, RHODE ISLAND