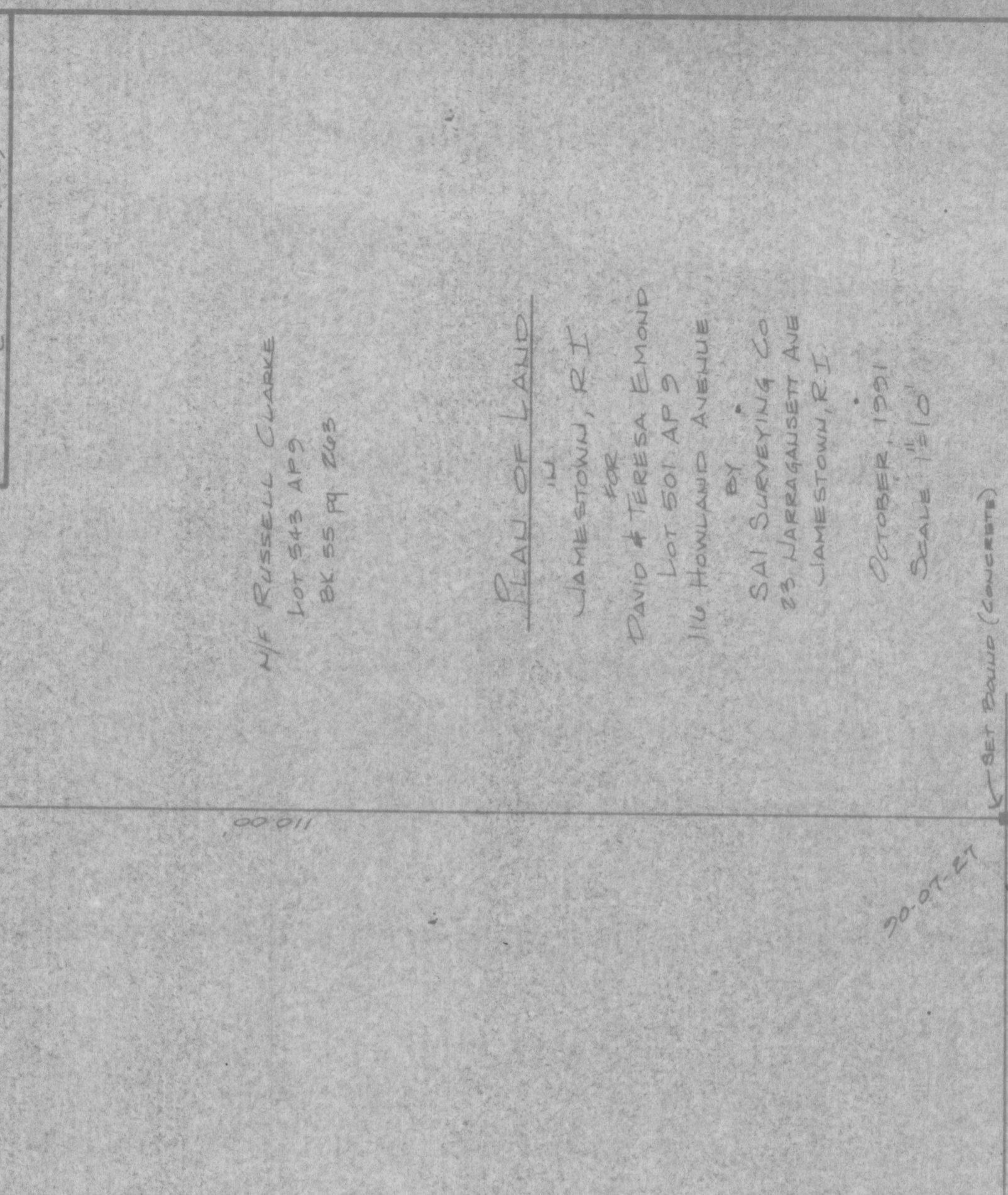
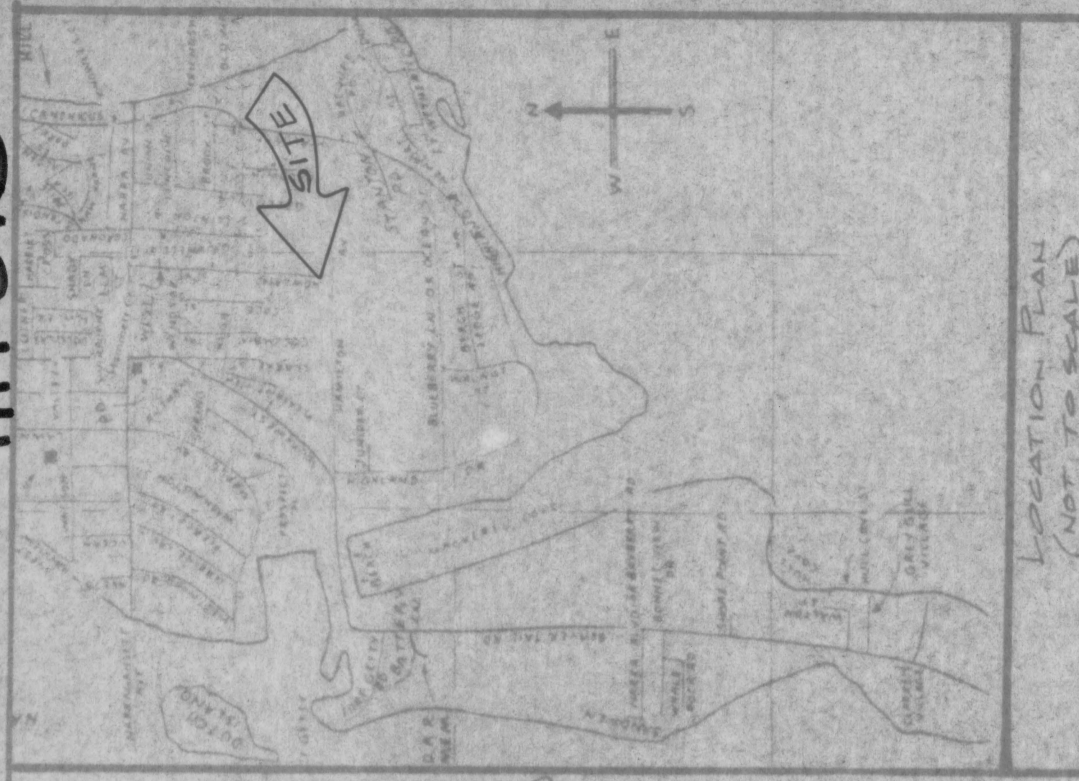


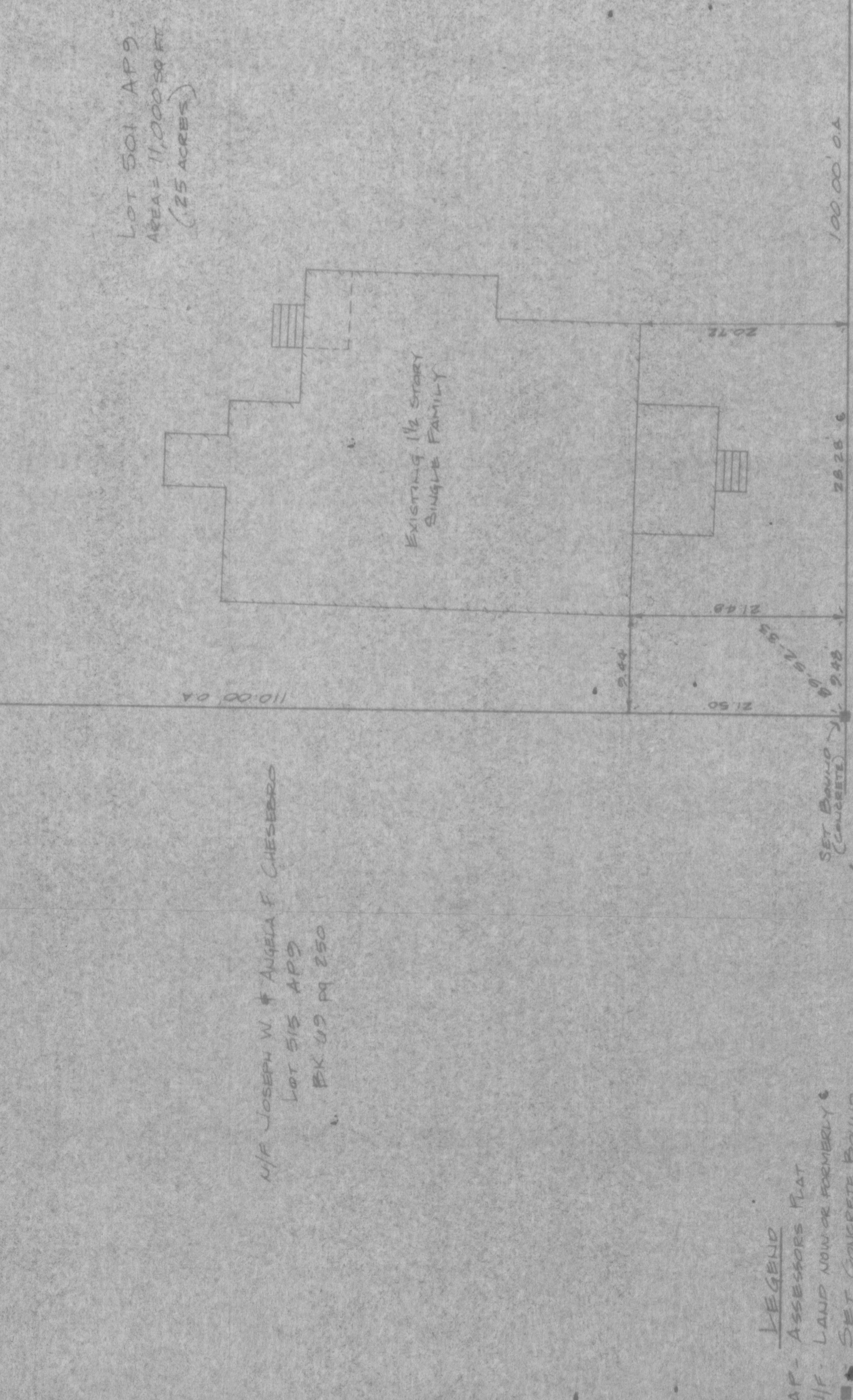
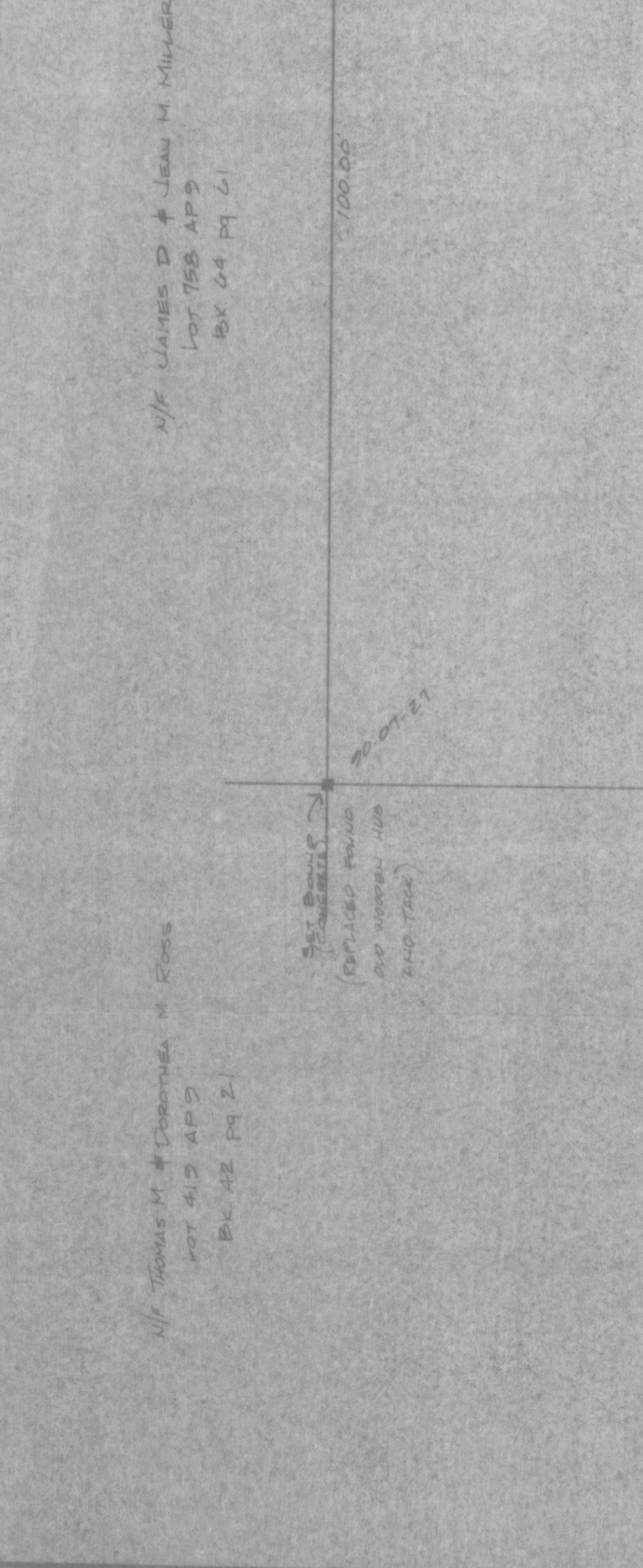
HPF 875



PLAN OF LAND
IN
JAMESTOWN, RI
FOR
DAVID & TERESA ELMOND
LOT 501 AP 9
116 HOWLAND AVENUE
BY
SAL SURVEYING CO
25 NARRAGANSETT AVE
JAMESTOWN, RI
OCTOBER, 1991
SCALE 1" = 10'

RECEIVED FOR RECORD IN JAMESTOWN, RI
DECEMBER 13, 1991 at 2:42 P.M.
TOWN CLERK
\$30.00 FEE

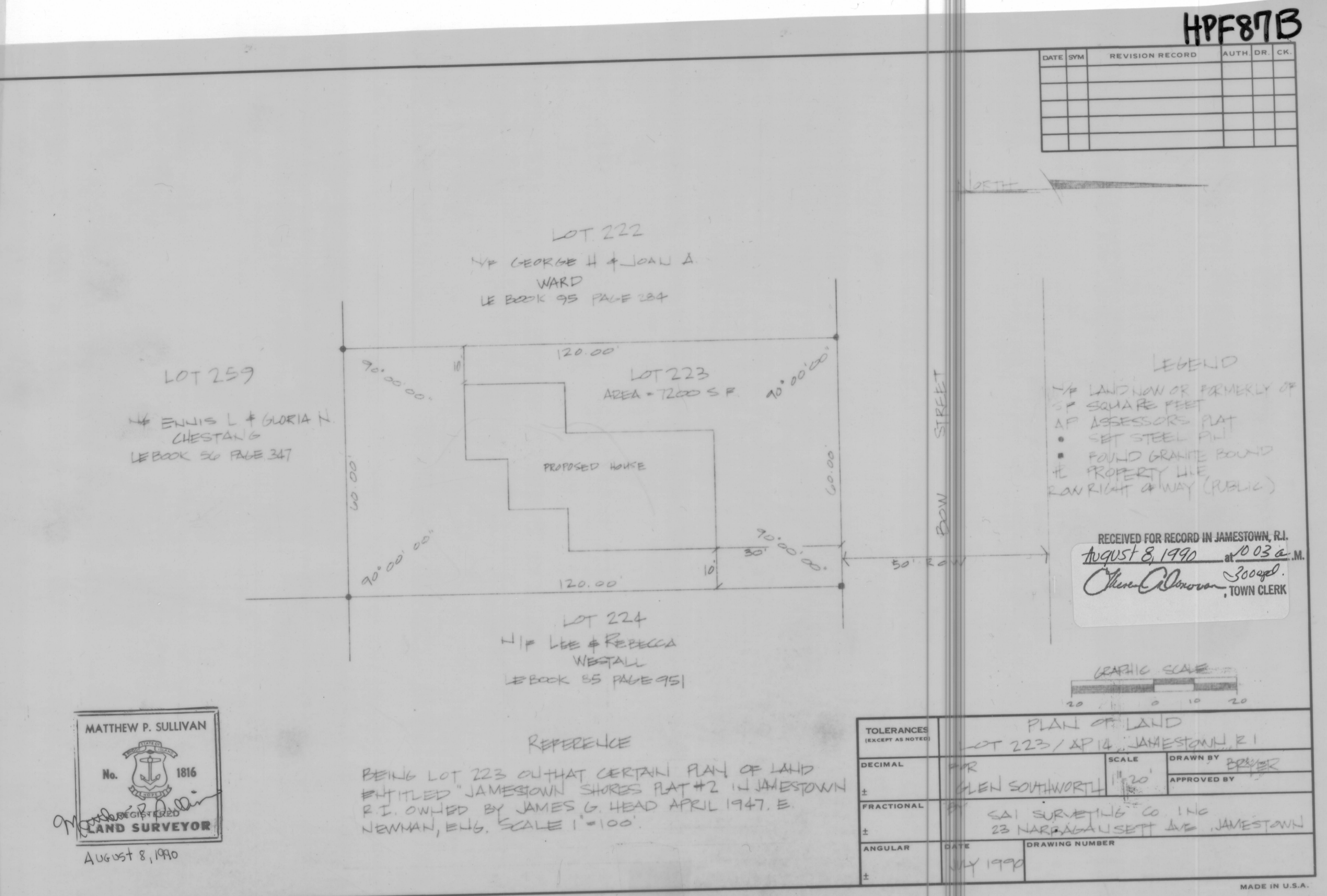
MATTHEW P. SULLIVAN
No. 1816
LAND SURVEYOR
AUGUST 8, 1990



RECEIVED FOR RECORD IN JAMESTOWN, RI
DECEMBER 13, 1991 at 2:42 P.M.
TOWN CLERK
\$30.00 FEE

MATTHEW P. SULLIVAN
No. 1816
LAND SURVEYOR
AUGUST 8, 1990

RECEIVED FOR RECORD IN JAMESTOWN, RI
DECEMBER 13, 1991 at 2:42 P.M.
TOWN CLERK
\$30.00 FEE



RECEIVED FOR RECORD IN JAMESTOWN, RI
AUGUST 8, 1990 at 2:03 P.M.
TOWN CLERK

MATTHEW P. SULLIVAN
No. 1816
LAND SURVEYOR
AUGUST 8, 1990

RECEIVED FOR RECORD IN JAMESTOWN, RI
AUGUST 8, 1990 at 2:03 P.M.
TOWN CLERK

MATTHEW P. SULLIVAN
No. 1816
LAND SURVEYOR
AUGUST 8, 1990

RECEIVED FOR RECORD IN JAMESTOWN, RI
AUGUST 8, 1990 at 2:03 P.M.
TOWN CLERK

MATTHEW P. SULLIVAN
No. 1816
LAND SURVEYOR
AUGUST 8, 1990

RECEIVED FOR RECORD IN JAMESTOWN, RI
AUGUST 8, 1990 at 2:03 P.M.
TOWN CLERK

MATTHEW P. SULLIVAN
No. 1816
LAND SURVEYOR
AUGUST 8, 1990

RECEIVED FOR RECORD IN JAMESTOWN, RI
AUGUST 8, 1990 at 2:03 P.M.
TOWN CLERK

MATTHEW P. SULLIVAN
No. 1816
LAND SURVEYOR
AUGUST 8, 1990

RECEIVED FOR RECORD IN JAMESTOWN, RI
AUGUST 8, 1990 at 2:03 P.M.
TOWN CLERK

MATTHEW P. SULLIVAN
No. 1816
LAND SURVEYOR
AUGUST 8, 1990

RECEIVED FOR RECORD IN JAMESTOWN, RI
AUGUST 8, 1990 at 2:03 P.M.
TOWN CLERK

MATTHEW P. SULLIVAN
No. 1816
LAND SURVEYOR
AUGUST 8, 1990

RECEIVED FOR RECORD IN JAMESTOWN, RI
AUGUST 8, 1990 at 2:03 P.M.
TOWN CLERK

MATTHEW P. SULLIVAN
No. 1816
LAND SURVEYOR
AUGUST 8, 1990

RECEIVED FOR RECORD IN JAMESTOWN, RI
AUGUST 8, 1990 at 2:03 P.M.
TOWN CLERK

MATTHEW P. SULLIVAN
No. 1816
LAND SURVEYOR
AUGUST 8, 1990

RECEIVED FOR RECORD IN JAMESTOWN, RI
AUGUST 8, 1990 at 2:03 P.M.
TOWN CLERK

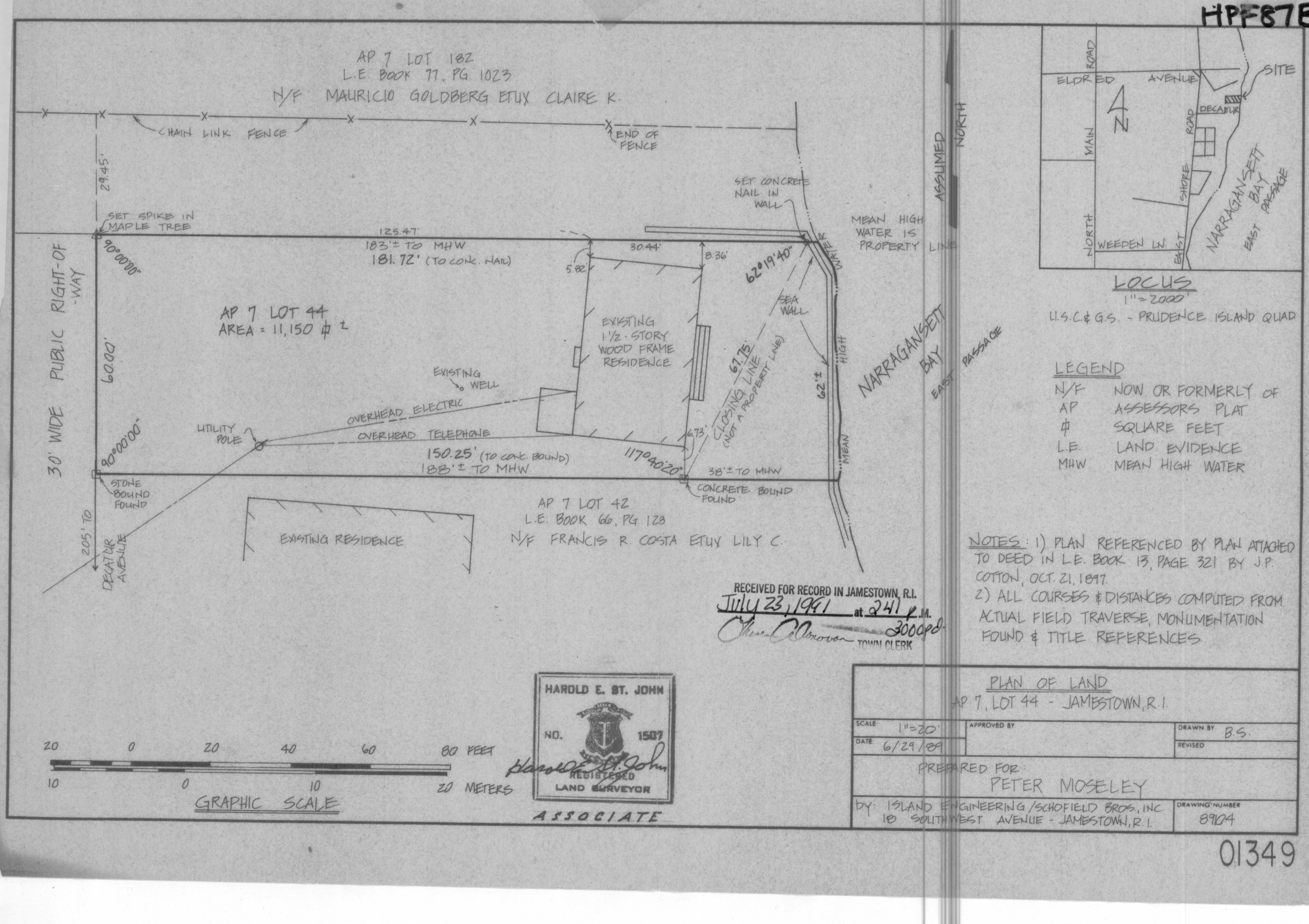
MATTHEW P. SULLIVAN
No. 1816
LAND SURVEYOR
AUGUST 8, 1990

RECEIVED FOR RECORD IN JAMESTOWN, RI
AUGUST 8, 1990 at 2:03 P.M.
TOWN CLERK

MATTHEW P. SULLIVAN
No. 1816
LAND SURVEYOR
AUGUST 8, 1990

RECEIVED FOR RECORD IN JAMESTOWN, RI
AUGUST 8, 1990 at 2:03 P.M.
TOWN CLERK

MATTHEW P. SULLIVAN
No. 1816
LAND SURVEYOR
AUGUST 8, 1990



RECEIVED FOR RECORD IN JAMESTOWN, RI
JULY 23, 1991 at 2:41 P.M.
TOWN CLERK

HAROLD E. ST. JOHN
No. 1507
LAND SURVEYOR
AUGUST 8, 1990

RECEIVED FOR RECORD IN JAMESTOWN, RI
JULY 23, 1991 at 2:41 P.M.
TOWN CLERK

HAROLD E. ST. JOHN
No. 1507
LAND SURVEYOR
AUGUST 8, 1990

RECEIVED FOR RECORD IN JAMESTOWN, RI
JULY 23, 1991 at 2:41 P.M.
TOWN CLERK

HAROLD E. ST. JOHN
No. 1507
LAND SURVEYOR
AUGUST 8, 1990

RECEIVED FOR RECORD IN JAMESTOWN, RI
JULY 23, 1991 at 2:41 P.M.
TOWN CLERK

HAROLD E. ST. JOHN
No. 1507
LAND SURVEYOR
AUGUST 8, 1990

RECEIVED FOR RECORD IN JAMESTOWN, RI
JULY 23, 1991 at 2:41 P.M.
TOWN CLERK

HAROLD E. ST. JOHN
No. 1507
LAND SURVEYOR
AUGUST 8, 1990

RECEIVED FOR RECORD IN JAMESTOWN, RI
JULY 23, 1991 at 2:41 P.M.
TOWN CLERK

HAROLD E. ST. JOHN
No. 1507
LAND SURVEYOR
AUGUST 8, 1990

RECEIVED FOR RECORD IN JAMESTOWN, RI
JULY 23, 1991 at 2:41 P.M.
TOWN CLERK

HAROLD E. ST. JOHN
No. 1507
LAND SURVEYOR
AUGUST 8, 1990

RECEIVED FOR RECORD IN JAMESTOWN, RI
JULY 23, 1991 at 2:41 P.M.
TOWN CLERK

HAROLD E. ST. JOHN
No. 1507
LAND SURVEYOR
AUGUST 8, 1990

RECEIVED FOR RECORD IN JAMESTOWN, RI
JULY 23, 1991 at 2:41 P.M.
TOWN CLERK

HAROLD E. ST. JOHN
No. 1507
LAND SURVEYOR
AUGUST 8, 1990

RECEIVED FOR RECORD IN JAMESTOWN, RI
JULY 23, 1991 at 2:41 P.M.
TOWN CLERK

HAROLD E. ST. JOHN
No. 1507
LAND SURVEYOR
AUGUST 8, 1990

RECEIVED FOR RECORD IN JAMESTOWN, RI
JULY 23, 1991 at 2:41 P.M.
TOWN CLERK

HPF 875

HPF 875

01349