

82 CEDAR HILL DEVELOPMENTS L.P.
6/23
SEE SHEET NO. 14

83 R.L. JOYNER
14/405
SEE SHEET NO. 12

84 M. JOYNER
14/404
SEE SHEET NO. 12

85 R. JOYNER
14/411
SEE SHEET NO. 12

86 C. JOYNER
14/403
SEE SHEET NO. 12

87 R. JOYNER
14/406
T = 25,000 ± S.F.
A = 8,555 ± S.F.
R = 16,445 ± S.F.
D = 5260 ± S.F.

88 DOYLE
14/67
T = 41,600 ± S.F.
A1 = 343 ± S.F.
A2 = 3,100 ± S.F.
R = 38,157 ± S.F.
B = 1665 ± S.F.
D = 4572 ± S.F.

89 PELLETTIER
14/117
T = 7030 ± S.F.
D = 1773 ± S.F.

90 ALLEN CUMMINGS
14/64
T = 7200 ± S.F.
B = 600 ± S.F.

91 GARDNER
14/63
T = 7200 ± S.F.
B = 2244 ± S.F.

92 GARDNER
14/62
T = 7200 ± S.F.
B = 2244 ± S.F.

93 COMERFORD
14/61
T = 7200 ± S.F.
B = 590 ± S.F.

94 PAQUETTE
14/94
T = 7200 ± S.F.
B = 4000 ± S.F.

95 GARDNER
14/62
T = 7200 ± S.F.
B = 2244 ± S.F.

96 GARDNER
14/63
T = 7200 ± S.F.
B = 2244 ± S.F.

97 ALLEN CUMMINGS
14/64
T = 7200 ± S.F.
B = 600 ± S.F.

98 DOYLE
14/67
T = 41,600 ± S.F.
A1 = 343 ± S.F.
A2 = 3,100 ± S.F.
R = 38,157 ± S.F.
B = 1665 ± S.F.
D = 4572 ± S.F.

99 PELLETTIER
14/117
T = 7030 ± S.F.
D = 1773 ± S.F.

100 SUYO
14/407
T = 12,857 ± S.F.
A = 2,894 ± S.F.
R = 9,963 ± S.F.

101 TRACEY
14/408
T = 12,160 ± S.F.

102 DISANDRO
14/46
T = 18,110 ± S.F.
C = 2,226 ± S.F.

103 PELLETTIER
14/117
T = 7030 ± S.F.
D = 1773 ± S.F.

104 BOTTIS
14/118
T = 7030 ± S.F.
B = 1325 ± S.F.

105 BOTTIS
14/119
T = 7200 ± S.F.
B = 885 ± S.F.

106 BRUNO
14/120
T = 7200 ± S.F.
B = 1165 ± S.F.

107 MACCARONE
14/16
T = 7200 ± S.F.
B = 3,875 ± S.F.

108 PAQUETTE
14/94
T = 7200 ± S.F.
B = 4000 ± S.F.

109 HEFFNER BUCACCI
14/164
T = 7200 ± S.F.
G = 65 ± S.F.

110 MURPHY
14/169
T = 7200 ± S.F.
G = 65 ± S.F.

111 HELM ST. STA. 24+48.36
N 161.097° S 518
E 531.124.103

112 HULL STREET
STA. 112+14.94, 174.89' RT

113 STERN STREET
STA. 120+26.80, 318.68' RT

114 RAMP A.B.B. STA. 20+69.25 =
N 161.097° S 518
E 531.124.103

115 HELM ST. STA. 24+48.36
N 161.097° S 518
E 531.124.103

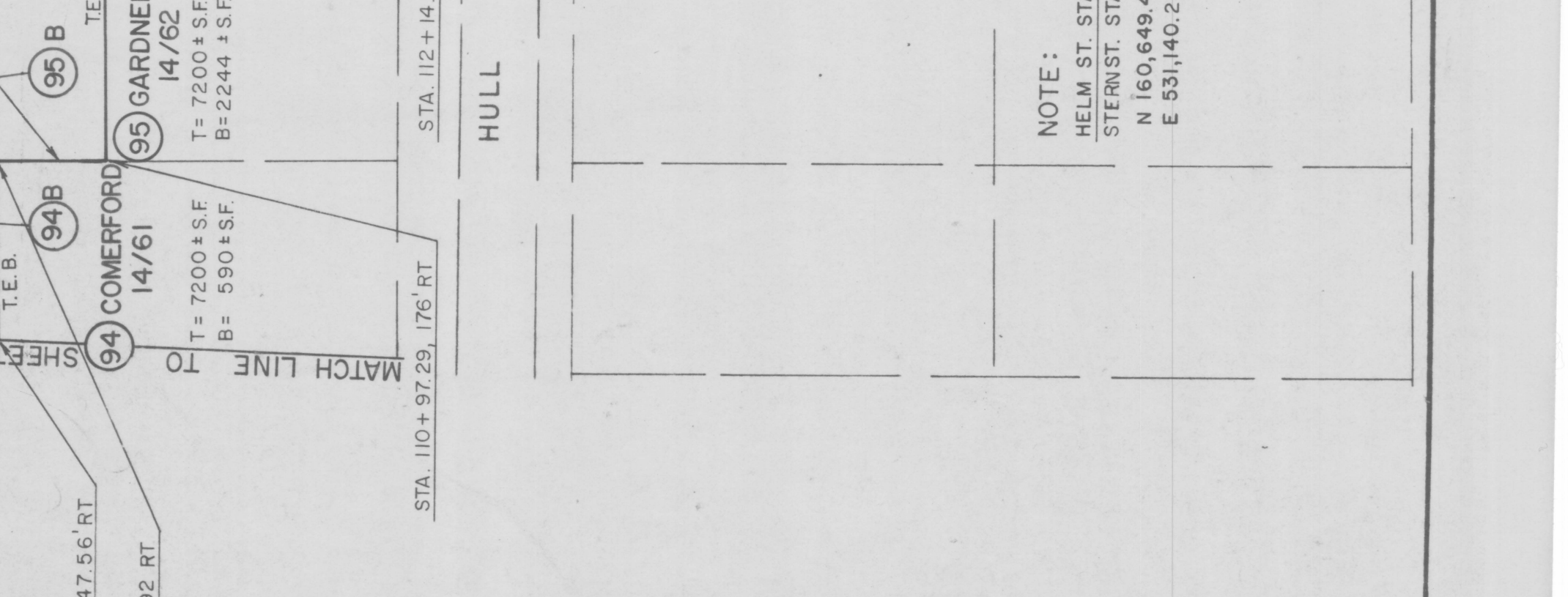
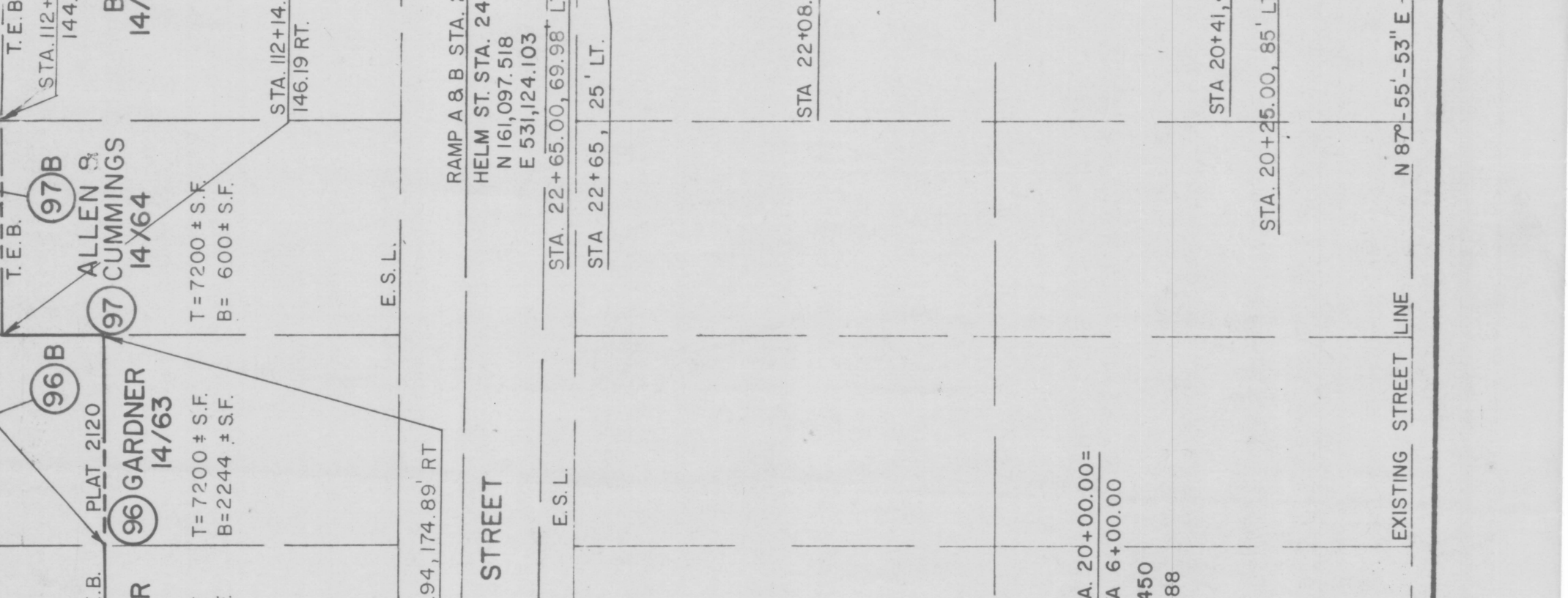
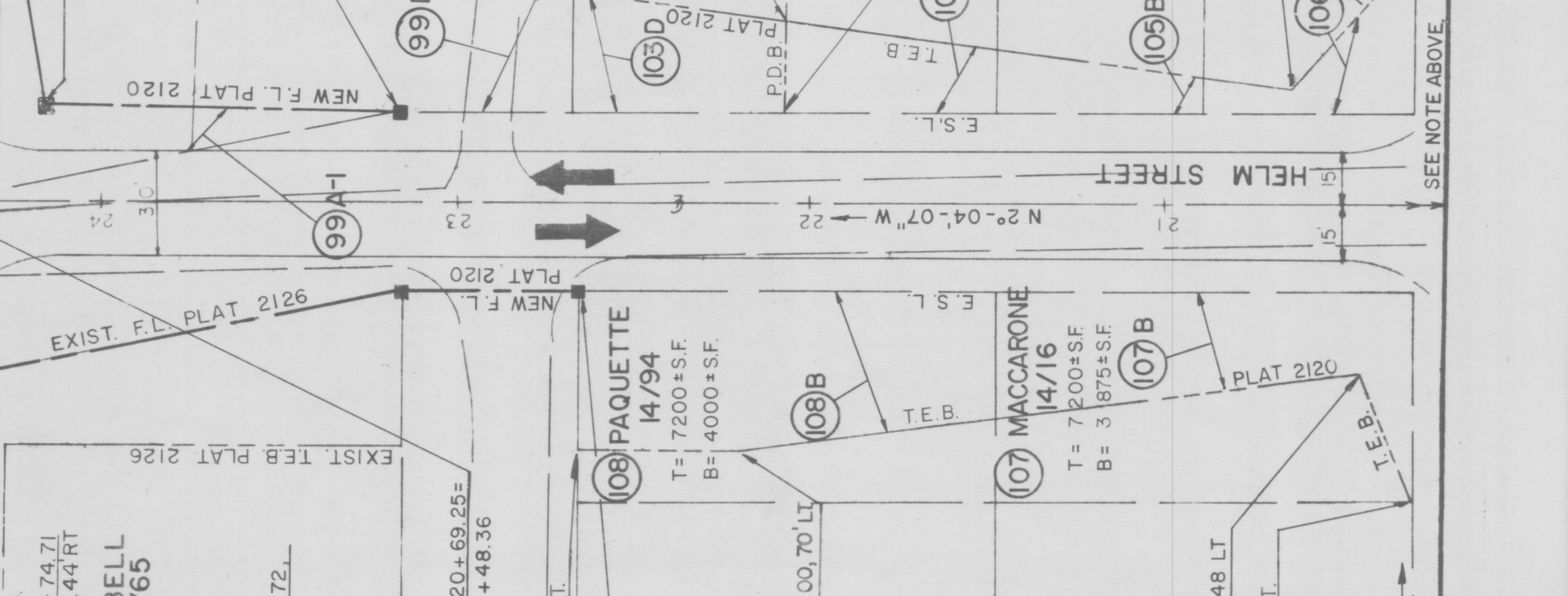
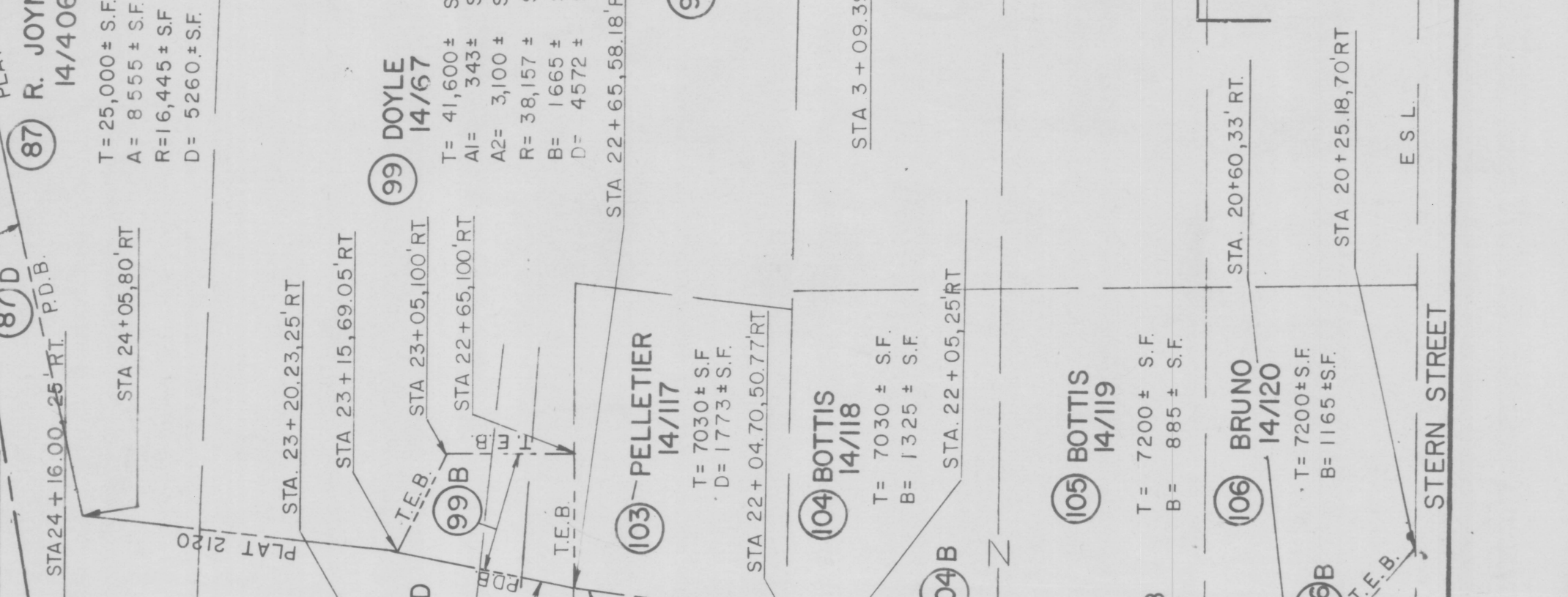
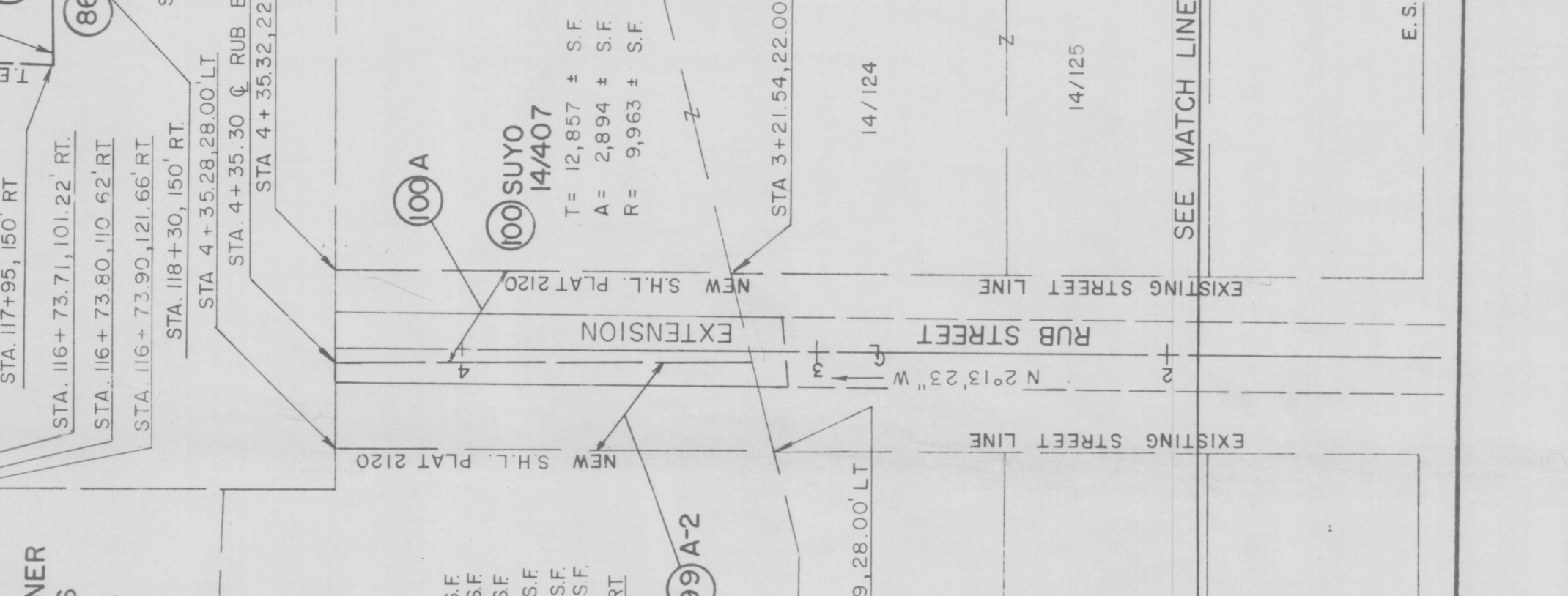
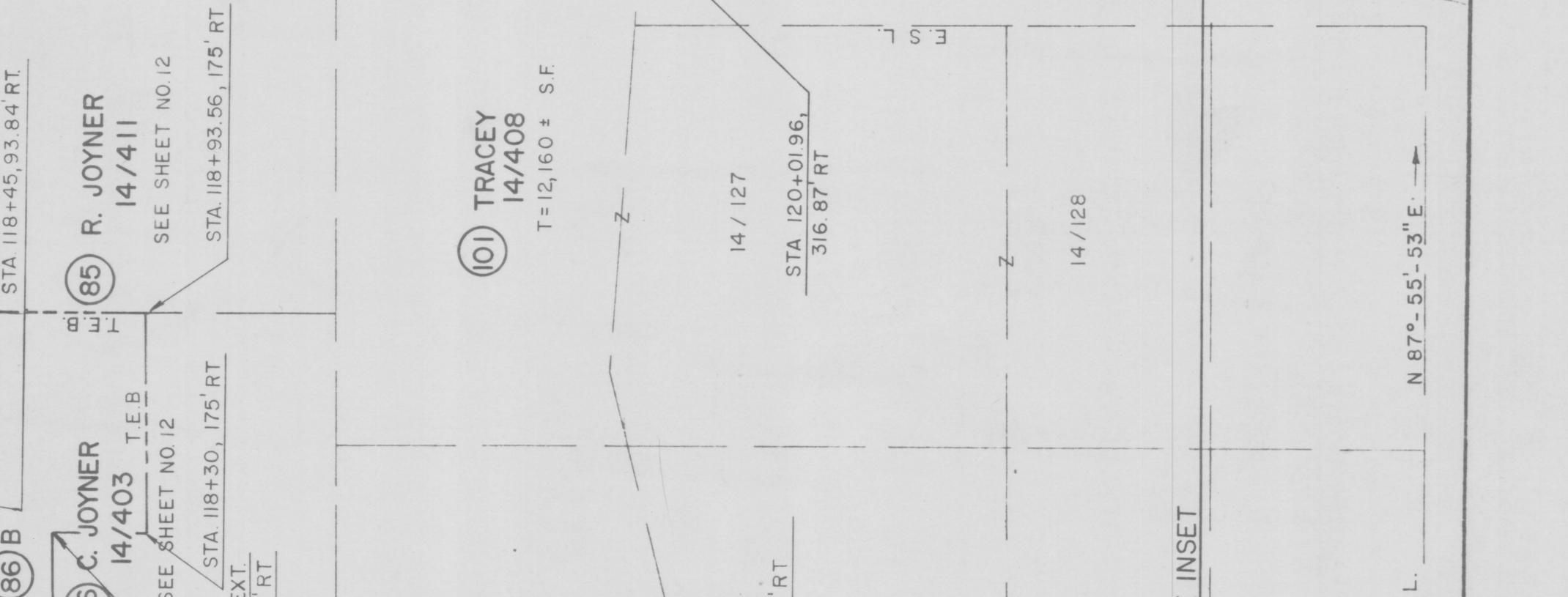
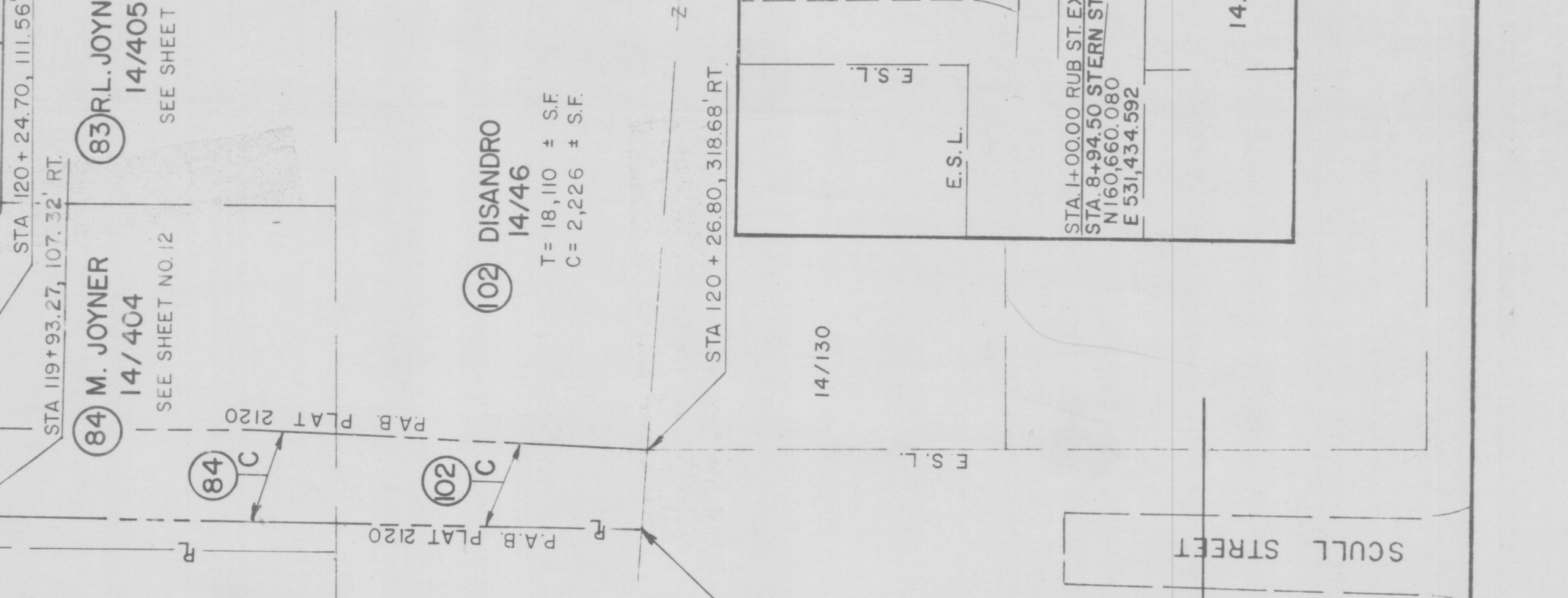
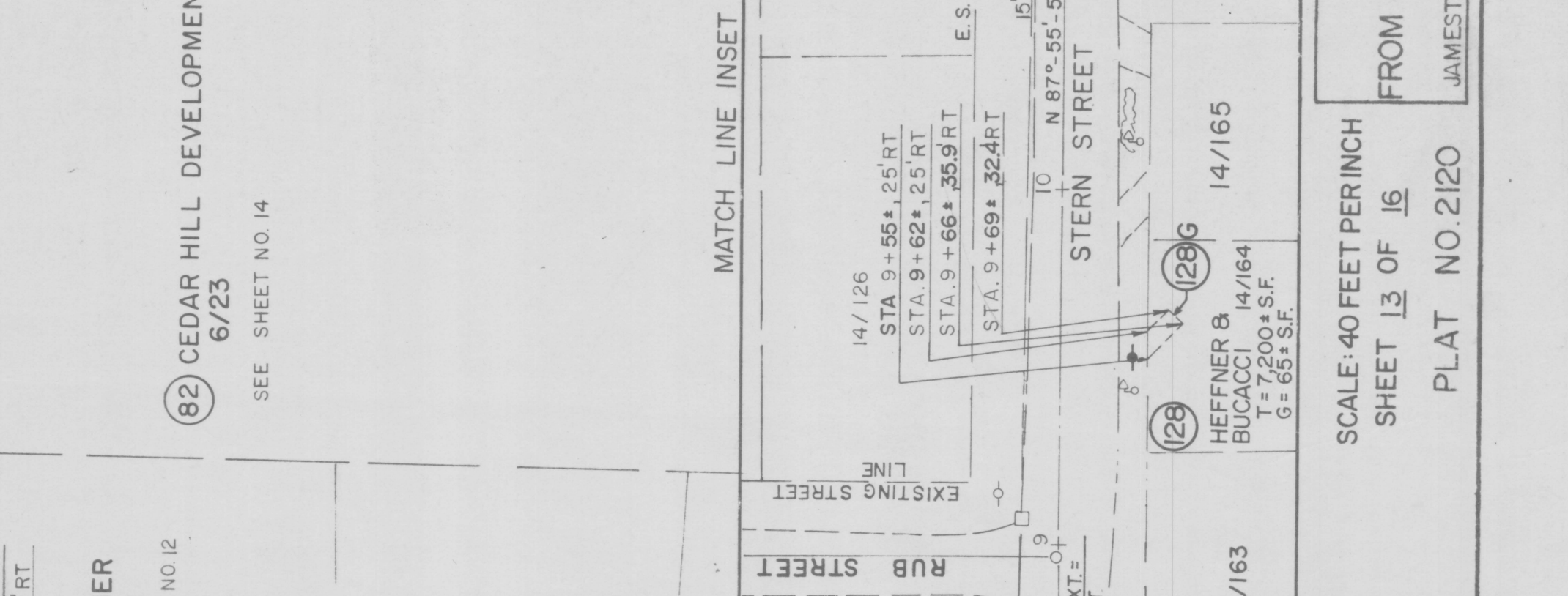
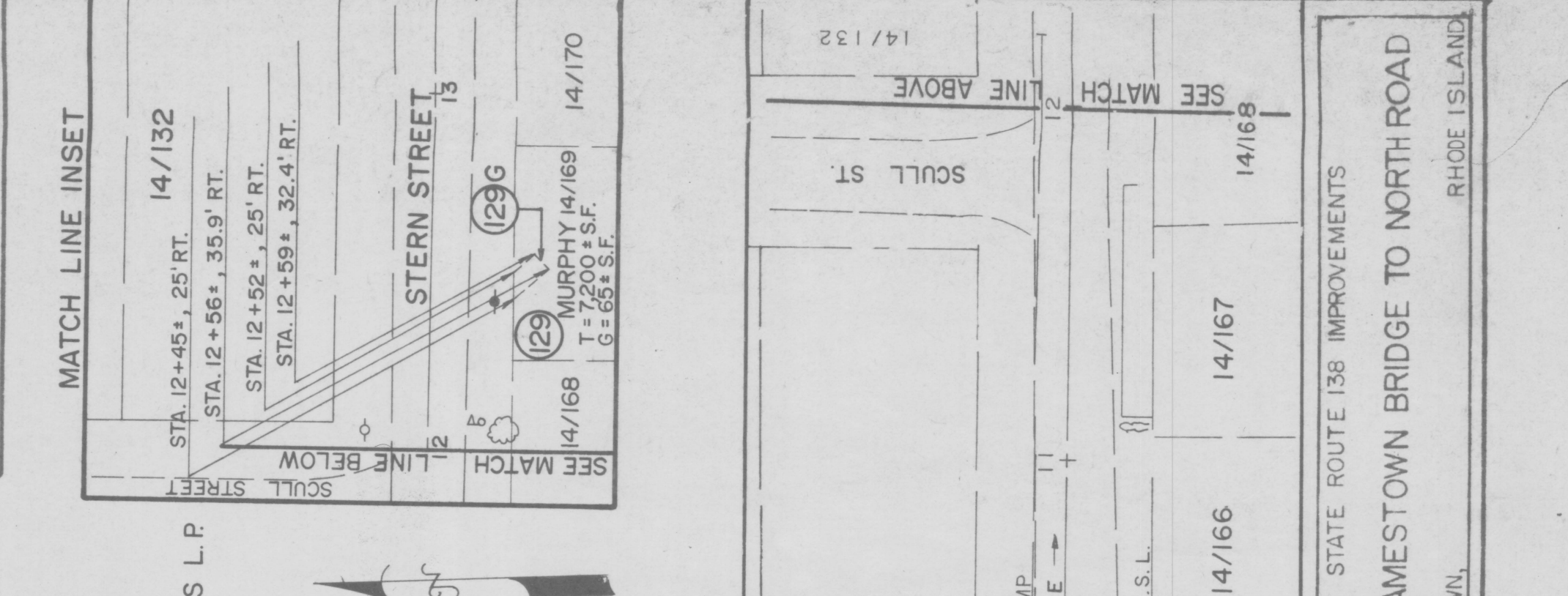
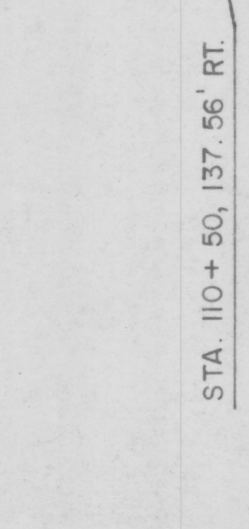
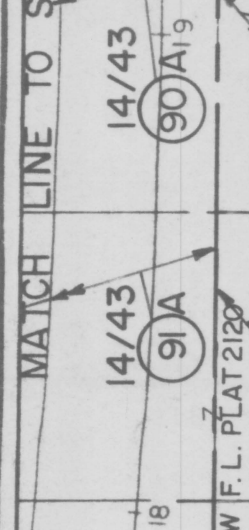
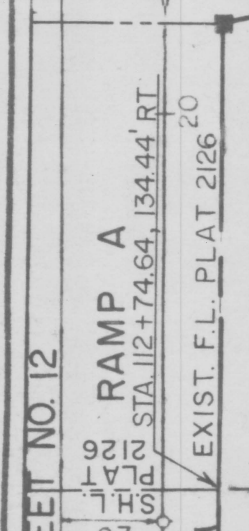
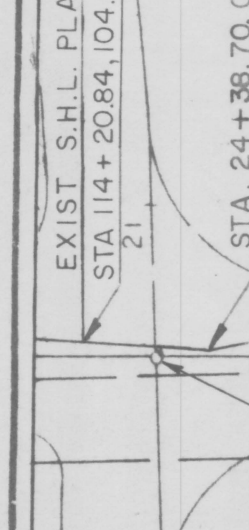
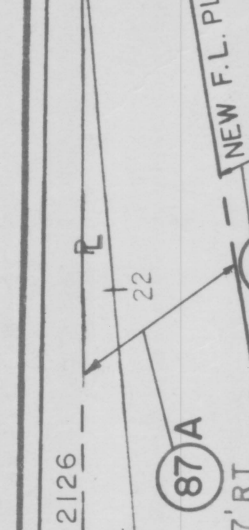
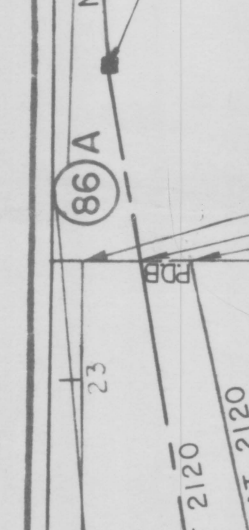
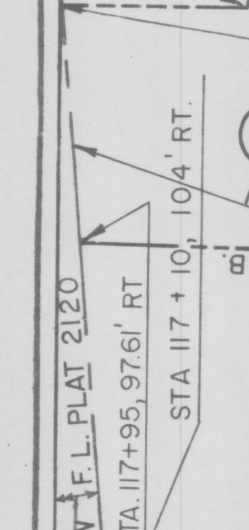
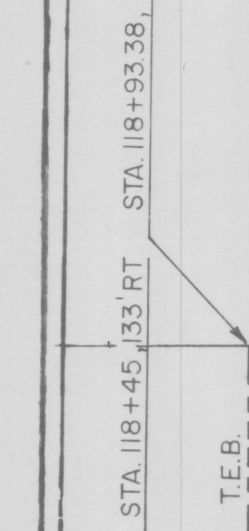
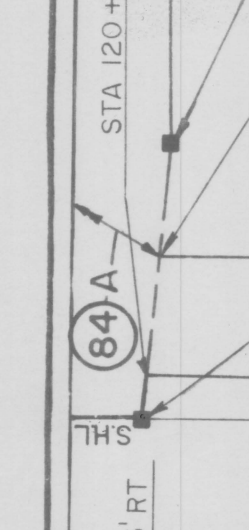
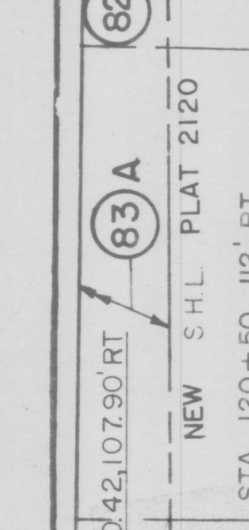
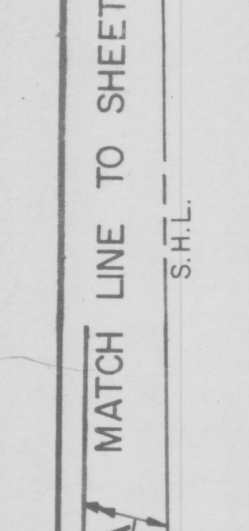
116 RAMP A.B.B. STA. 20+69.25 =
N 161.097° S 518
E 531.124.103

117 HELM ST. STA. 24+48.36
N 161.097° S 518
E 531.124.103

118 RAMP A.B.B. STA. 20+69.25 =
N 161.097° S 518
E 531.124.103

119 HELM ST. STA. 24+48.36
N 161.097° S 518
E 531.124.103

120 RAMP A.B.B. STA. 20+69.25 =
N 161.097° S 518
E 531.124.103



NOTE:
HELM ST. STA. 20+00.00 =
STERN ST. STA. 6+00.00
N 160.649.450
E 531.140.288

SCALE: 40 FEET PER INCH
SHEET 13 OF 16
PLAT NO. 2120

STATE ROUTE 138 IMPROVEMENTS
FROM JAMESTOWN BRIDGE TO NORTH ROAD
JAMESTOWN, RHODE ISLAND