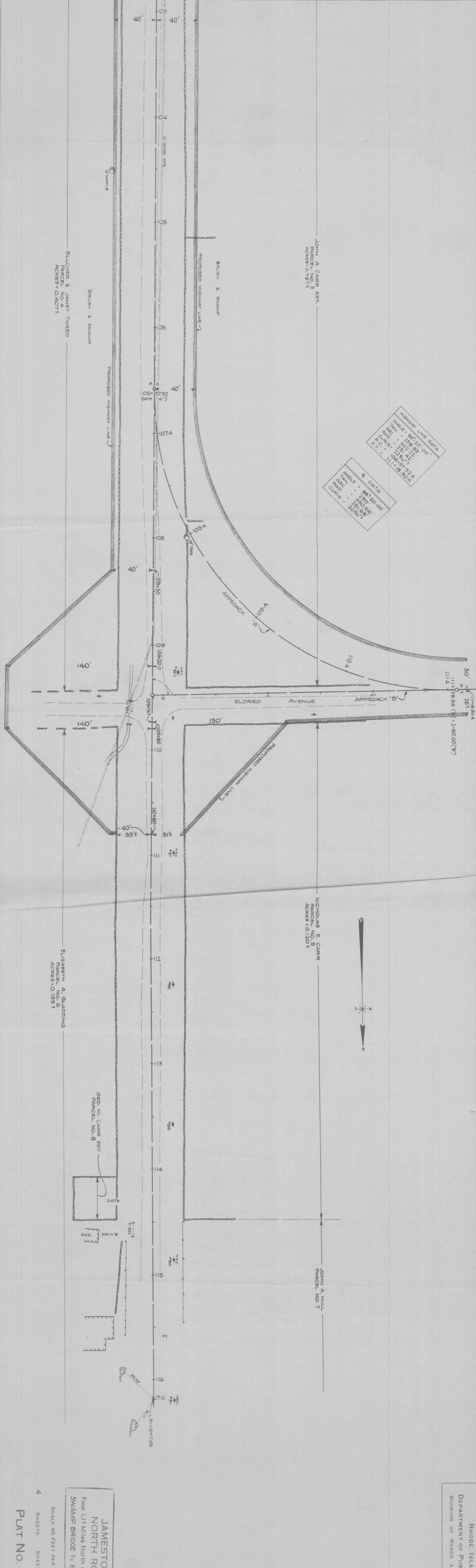


**HIGHWAY LINE DATA**  
 ANGLE = 88°20'00"  
 TANG. = 258.80'  
 P.C. = 402+32.11  
 P.CURVE = 228.80'  
 P.T. = 111+18.30A

**E DATA**  
 ANGLE = 88°20'00"  
 TANG. = 258.80'  
 P.C. = 402+32.11  
 P.CURVE = 228.80'  
 P.T. = 111+18.30A



**JAMESTOWN**  
 NORTH ROAD  
 From 1.12 Miles North of Round  
 Swamp Bridge to Eldred Ave.

SCALE 40 FEET PER INCH  
 4 SHEETS SHEET NO. 4

**PLAT NO. 645**