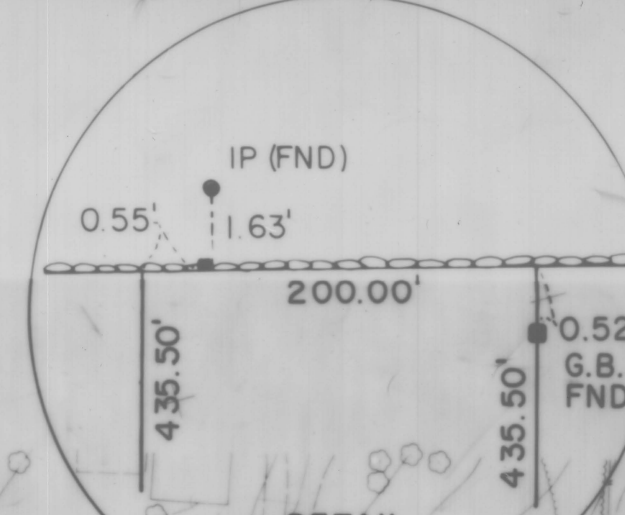


No.	Δ	R	L	T	Ch
1	70°47'36"	125.00	154.45	88.82	144.81
2	31°24'57"	175.00	95.95	49.22	94.76
3	47°54'05"	175.00	146.31	77.74	142.08
4	33°05'54"	175.00	101.09	52.00	99.69
5	14°48'12"	175.00	45.21	22.73	45.09

ZONING CLASSIFICATION RR-200

RURAL RESIDENTIAL  
 MINIMUM LOT 200,000 S.F.  
 MINIMUM FRONTAGE 300 L.F.  
 SETBACKS  
 FRONT 50 F.T.  
 REAR 50 F.T.  
 SIDE 40 F.T.

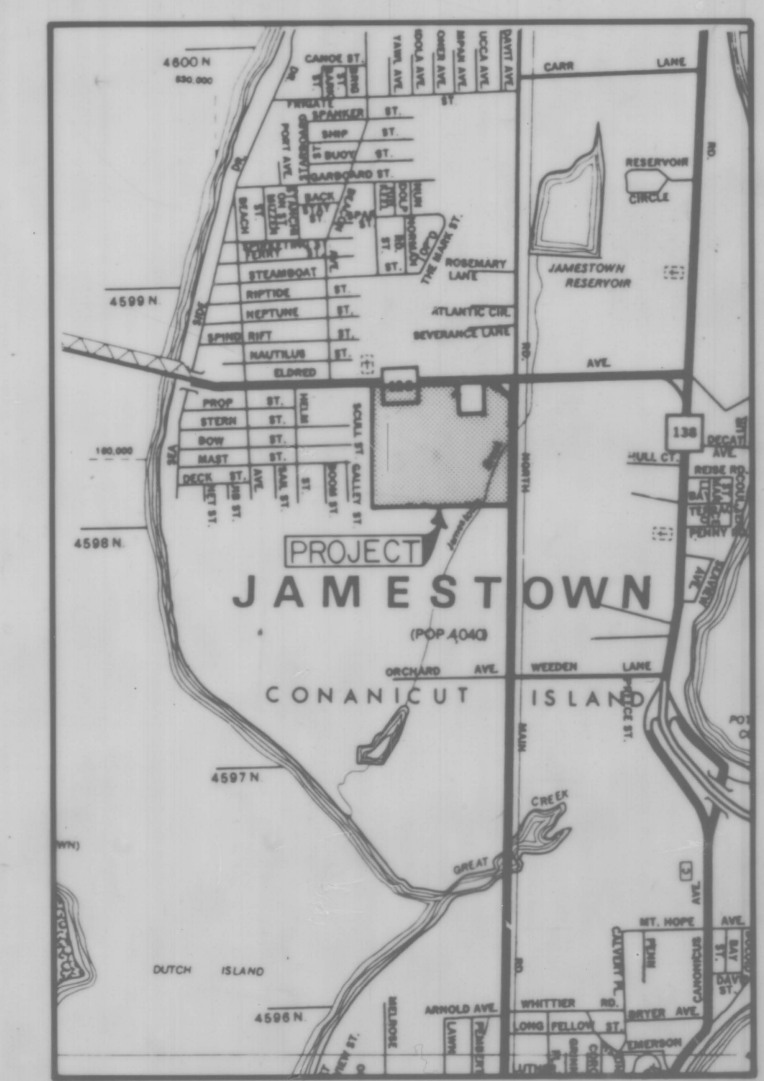
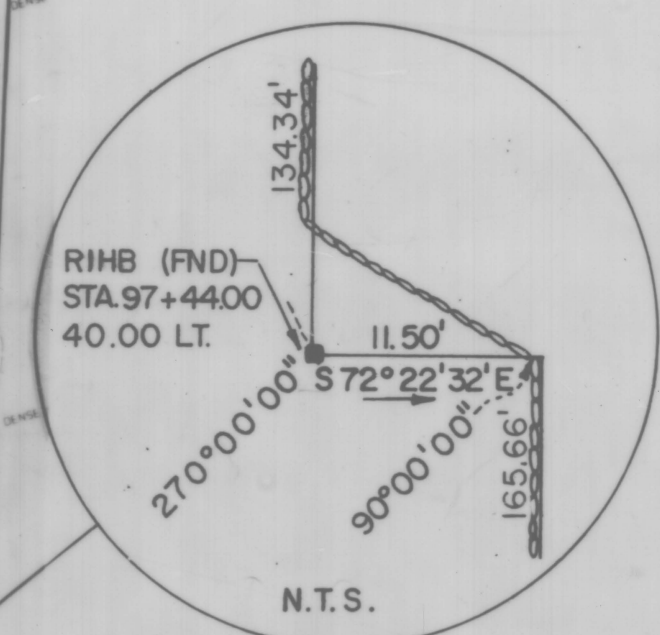


EQU. STA 55+90.69 ELDRED AVE. =  
 STA 109+29.93 NORTH ROAD



No.	Δ	R	L	T	Ch
1	64°22'21"	251.42	282.47	158.24	267.85

REFERENCES:  
 1) PLAN ENTITLED "PROPOSED LAND ACQUISITION" BY NEWPORT ELECTRIC CORPORATION FROM JOHN A.C. KNUDSEN, JAMESTOWN, RHODE ISLAND SCALE: 1"=40', FEBRUARY 5, 1970 BY LEON M. SHAW ON FILE IN THE TOWN HALL OF JAMESTOWN.  
 2) PLAN ENTITLED JAMESTOWN SHORES PLAT NO. IN JAMESTOWN, R.I., OWNED BY JAMES G. HEAD, SCALE 1"=100', APRIL 1946 ON FILE IN TOWN HALL OF JAMESTOWN  
 3) STATE HIGHWAY PLAT NO. 711, SHEETS 3 THROUGH 6  
 4) STATE HIGHWAY PLAT NO. 645, SHEETS 3 AND 4



RECEIVED FOR RECORD IN JAMESTOWN, R.I.  
 November 23, 1989 at 9:06 a.m.  
 [Signature] TOWN CLERK

REVISED PLAN FOR  
**CEDAR HILL FARM**  
 SITUATED IN  
 JAMESTOWN, R.I.  
 PREPARED FOR: WILDFIELD ASSOCIATES

NO.	REVISION	BY	DATE
1	REV. LOTS 2, 3 & 4	DJM	4-17-89
2	REV. LOTS 3 & 4	RG	4-28-89
3	LOTS 2, 4, 6, 7, 8 CEDAR HILL DR.	DJM	11-14-89
4	ADD CONSERVATION EASMT.	SH	11-15-89



**CAROFALO**  
 LEONARD A. GAROFALO & ASSOCIATES, INC.  
 ENGINEERS/SURVEYORS/PLANNERS  
 780 JEFFERSON BOULEVARD  
 WARWICK, RHODE ISLAND  
 401-738-1000 02887

JOB NO. 2618	DRAWN BY BDF
DRWG. NO. 2790	CHECKED JD
SCALE 1"=100'	APPROVED SW
SHEET	DATE MAR. 3, 1987