

John S. Huber
Charter Planning Commission
Approved 16 Jan 1977

EAST PASSAGE ESTATES
SECTION I
JAMESTOWN, RHODE ISLAND
COMMERCE OIL REFINING CORPORATION

RAYMOND W. SCHWAB ASSOCIATES, INC.
11 NORTH ROAD
PEACE DALE, R. I.

JOB NO: RC1060976A
DATE: Oct. 19, 1977
SCALE: 1" = 100'
DRAWN BY: DdB
CHECKED BY: AWJ
SHEET NO.

OTHER LAND OF
COMMERCE OIL REFINING CORPORATION

CENTERLINE CURVE DATA

- A1 ARC = 191.81'
Δ = 40°-00'-00"
CH = 127.94'
RAD = 274.75'
- A2 ARC = 760.62'
Δ = 91°-25'-15"
CH = 602.46'
RAD = 476.70'
- B1 ARC = 581.19'
Δ = 90°-00'-00"
CH = 323.26'
RAD = 370.00'
- B2 ARC = 363.47'
Δ = 39°-49'-56"
CH = 356.19'
RAD = 522.82'
- E1 ARC = 198.86'
Δ = 15°-00'-00"
CH = 198.29'
RAD = 759.77'

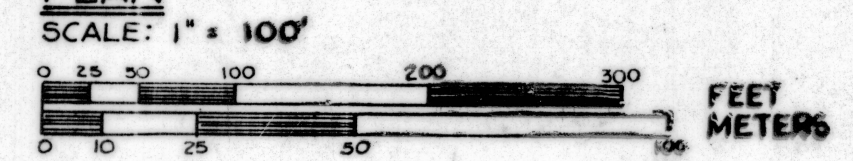
SOIL EROSION CONTROL

TEMPORARY EROSION CONTROL MEASURES SHALL BE IMPLEMENTED AND MAINTAINED DURING AND AFTER CONSTRUCTION UNTIL NATURAL VEGETATION IS RE-ESTABLISHED BY THE USE OF HAY BALE CHECKS, STONE RUBBLE SEDIMENT BASINS AND BY OTHER METHODS AS REQUIRED.

LEGEND

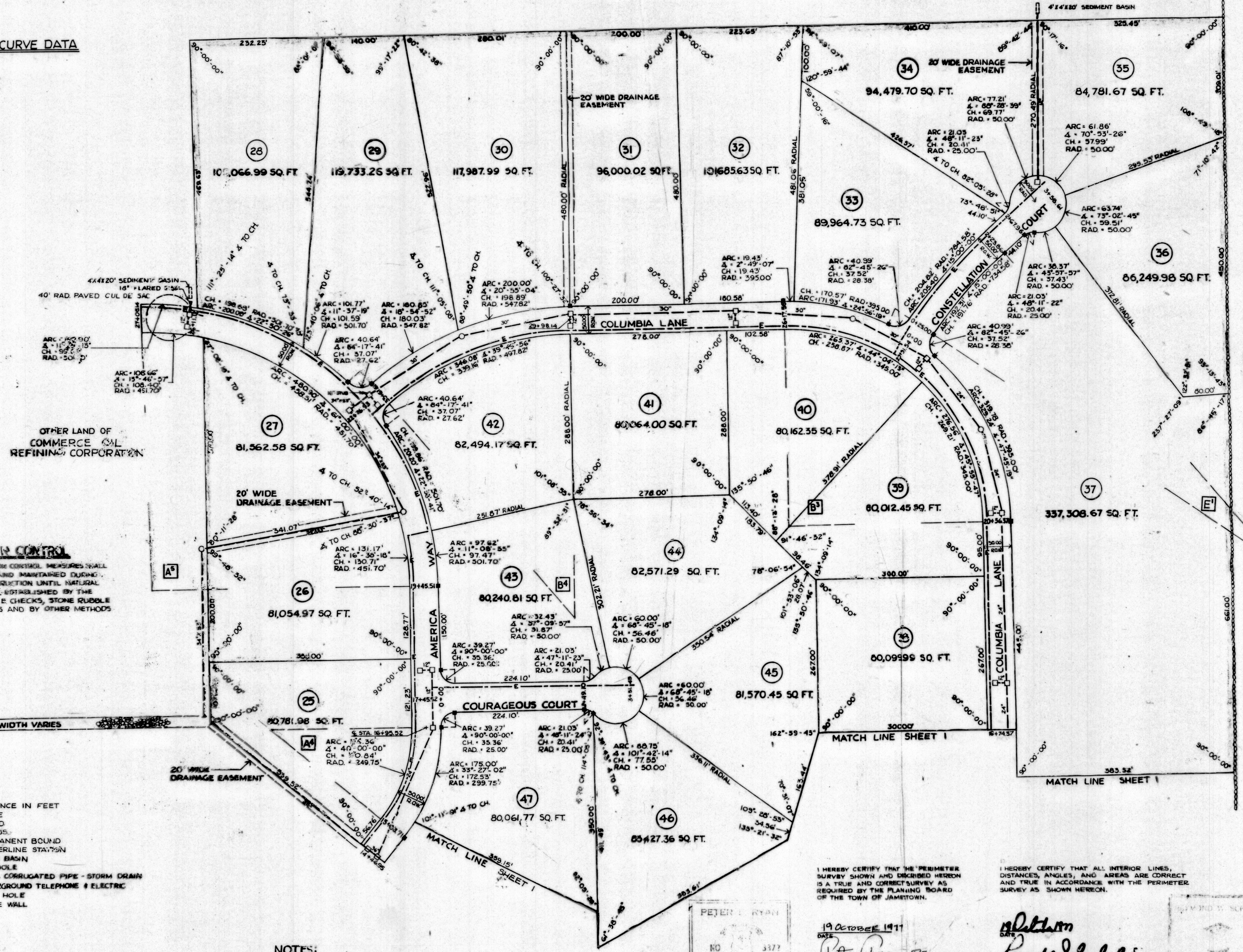
- 339.52' - DISTANCE IN FEET
- Δ - ANGLE
- CH - CHORD
- RAD - RADIUS
- - PERMANENT BOUND
- 15+03.70 - CENTERLINE STATION
- - CATCH BASIN
- - MANHOLE
- - METAL CORRUGATED PIPE - STORM DRAIN
- E- - UNDERGROUND TELEPHONE & ELECTRIC
- - DRILL HOLE
- - STONE WALL

PLAN



NOTES:

- ALL STREETS AS SHOWN DEDICATED TO THE TOWN OF JAMESTOWN.
- ALL DRAINAGE EASEMENTS AS SHOWN GRANTED TO THE TOWN OF JAMESTOWN.
- ALL STORM DRAINS TO BE METAL CORRUGATED PIPE OR TOWN ENGINEER APPROVED EQUAL.



I HEREBY CERTIFY THAT THE PERIMETER SURVEY SHOWN AND DESCRIBED HEREON IS A TRUE AND CORRECT SURVEY AS REQUIRED BY THE PLANNING BOARD OF THE TOWN OF JAMESTOWN.

PETER RYAN
REGISTERED PROFESSIONAL ENGINEER

19 OCTOBER 1977
Peter Ryan PE
REGISTERED ENGINEER

I HEREBY CERTIFY THAT ALL INTERIOR LINES, DISTANCES, ANGLES, AND AREAS ARE CORRECT AND TRUE IN ACCORDANCE WITH THE PERIMETER SURVEY AS SHOWN HEREON.

RAYMOND W. SCHWAB
REGISTERED ENGINEER

DATE FILED: OCTOBER 19, 1977

IT PASS

November 2, 1977