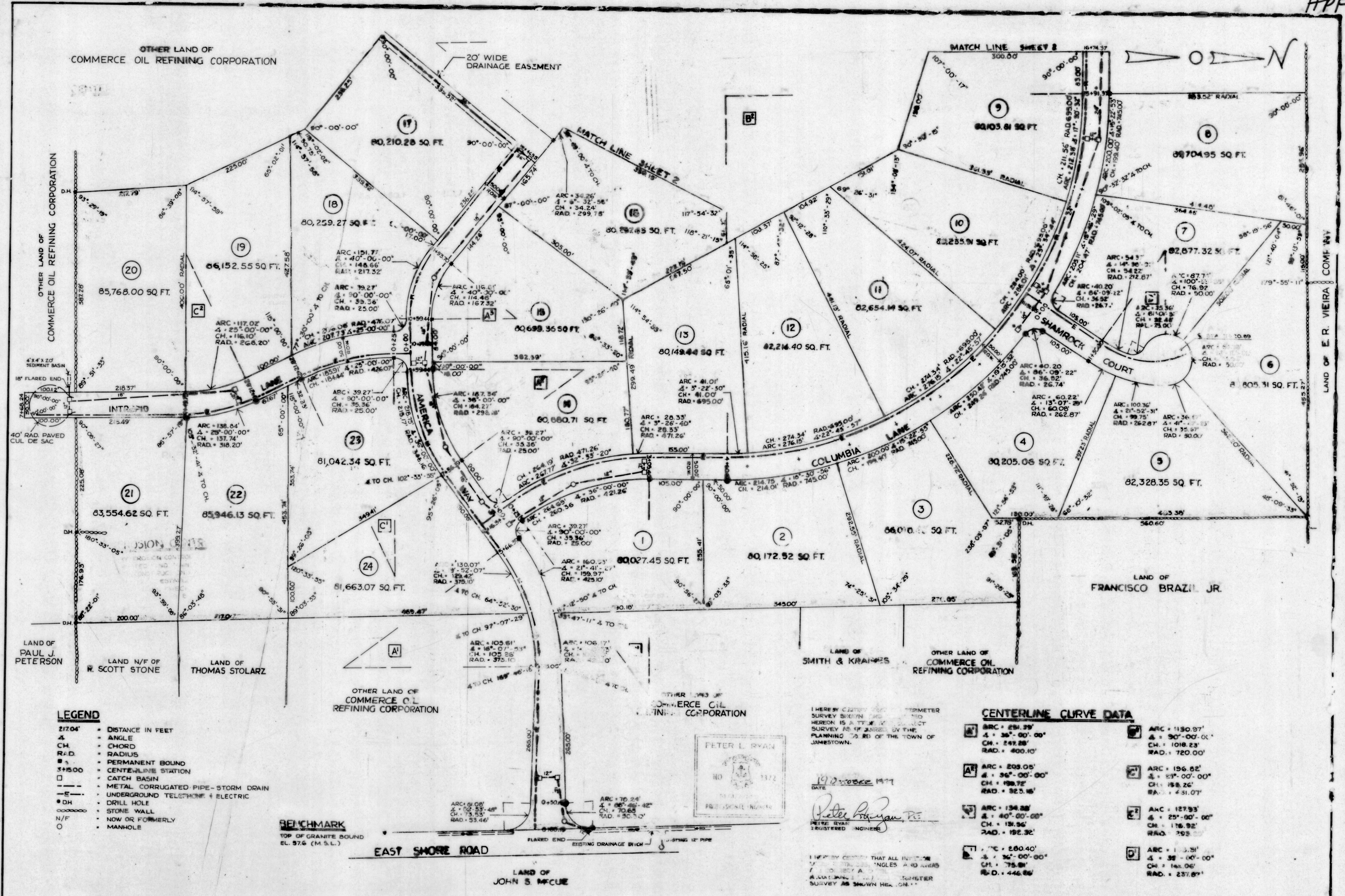


HPF78B

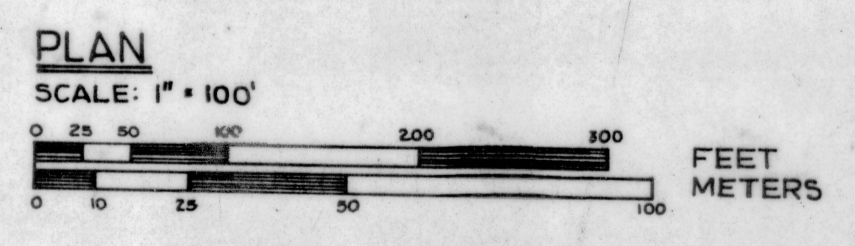
REVISIONS:
John T. Hulan
Charles Planning Commission
Approved 16 Jan 1977

EAST PASSAGE ESTATES
SECTION I
JAMESTOWN, RHODE ISLAND
COMMERCE OIL REFINING CORPORATION

RAYMOND W. SCHWAB
ASSOCIATES, INC.
1 NORTH ROAD
PEACE DALE, R.I.
JOB NO: RC1060976A
DATE: Oct 19, 1977
SCALE: 1" = 100'
DRAWN BY: [Signature]
CHECKED BY: A.W.
SHEET NO. 1
OF TWO

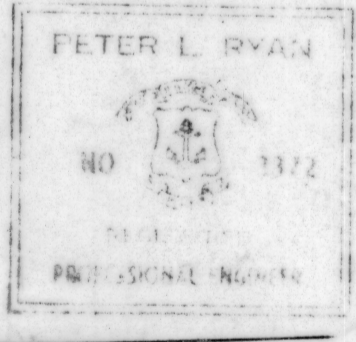


- LEGEND**
- 21704' = DISTANCE IN FEET
 - ∠ = ANGLE
 - CH = CHORD
 - R.A.D. = RADIUS
 - = PERMANENT BOUND
 - = CENTERLINE STATION
 - = CATCH BASIN
 - E— = METAL CORRUGATED PIPE - STORM DRAIN
 - U— = UNDERGROUND TELEPHONE & ELECTRIC
 - = DRILL HOLE
 - = STONE WALL
 - N/F = NOW OR FORMERLY
 - = MANHOLE



NOTES:
ALL STREETS AS SHOWN DEDICATED TO THE TOWN OF JAMESTOWN.
ALL DRAINAGE EASEMENTS AS SHOWN GRANTED TO THE TOWN OF JAMESTOWN.
ALL STORM DRAINS TO BE METAL CORRUGATED PIPE OR TOWN ENGINEER APPROVED EQUAL.

SOIL EROSION:
TEMPORARY EROSION CONTROL MEASURES SHALL BE IMPLEMENTED AND MAINTAINED DURING AND AFTER CONSTRUCTION UNTIL NATURAL VEGETATION IS REESTABLISHED. BY THE USE OF MAY BALE CHECKS, STONE CURBS, SEDIMENT BASINS AND OTHER METHODS AS REQUIRED.



I HEREBY CERTIFY THAT THE PERIMETER SURVEY SHOWN AND THE CENTERLINE SURVEY AS SHOWN WERE MADE BY THE PLANNING 78-B OF THE TOWN OF JAMESTOWN.
DATE: 10/20/1977
Peter L. Ryan, P.E.
REGISTERED PROFESSIONAL ENGINEER

I HEREBY CERTIFY THAT ALL INFORMATION CONTAINED HEREIN IS TRUE AND CORRECT AND THAT I AM A REGISTERED PROFESSIONAL ENGINEER.
R.W. Schwab
REGISTERED PROFESSIONAL ENGINEER

CENTERLINE CURVE DATA

A	ARC = 281.29' ∠ = 36°-00'-00" CH = 247.88' RAD. = 400.10'	F	ARC = 1150.97' ∠ = 30°-00'-00" CH = 1018.23' RAD. = 720.00'
A'	ARC = 208.05' ∠ = 36°-00'-00" CH = 188.75' RAD. = 325.16'	G	ARC = 156.82' ∠ = 30°-00'-00" CH = 158.26' RAD. = 451.07'
B	ARC = 138.88' ∠ = 40°-00'-00" CH = 121.94' RAD. = 192.32'	H	ARC = 127.93' ∠ = 30°-00'-00" CH = 116.92' RAD. = 353.00'
C	ARC = 280.40' ∠ = 36°-00'-00" CH = 247.88' RAD. = 400.10'	I	ARC = 1150.97' ∠ = 30°-00'-00" CH = 1018.23' RAD. = 720.00'



DATE FILED: OCTOBER 19, 1977

November 2, 1977