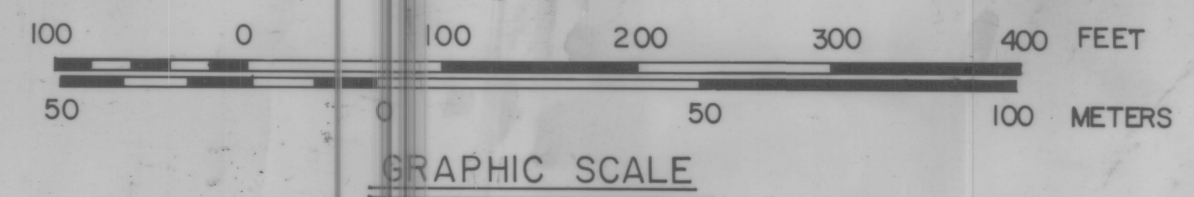
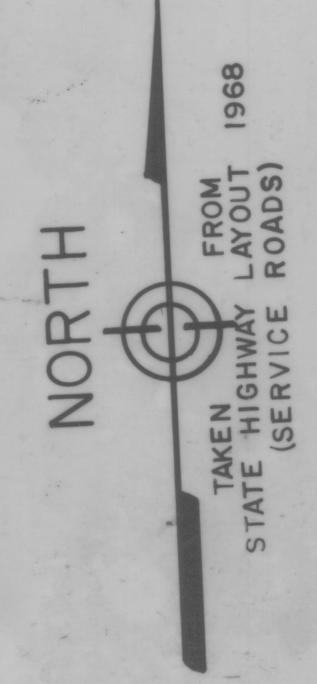
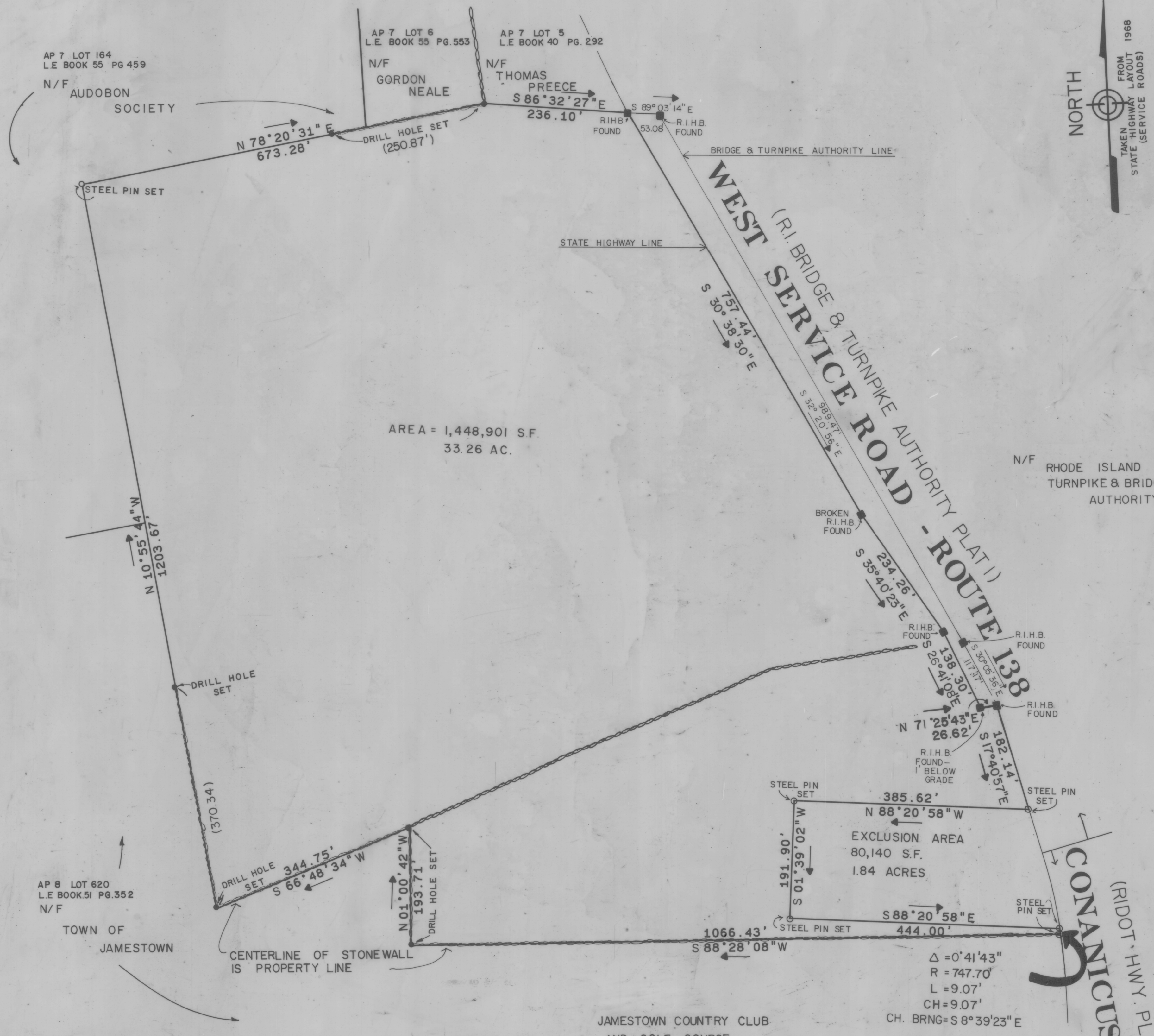


LOCUS
(NOT TO SCALE)



DATE OF SURVEY - DECEMBER 1985

"THIS SURVEY AND PLAN CONFORM TO A CLASS C STANDARD AS ADOPTED BY THE RHODE ISLAND SOCIETY OF PROFESSIONAL LAND SURVEYORS."

BY: _____ R.L.S.

NOTE:
ALL COURSES AND DISTANCES COMPUTED FROM ACTUAL FIELD TRAVERSE, MONUMENTATION FOUND AND TITLE RESEARCH.

LEGEND

- N/F NOW OR FORMERLY OF
- AP ASSESSORS PLAT
- AC ACRES
- S.F. SQUARE FEET
- STONE WALL
- RHODE ISLAND HIGHWAY BOUND

RECEIVED FOR RECORD IN JAMESTOWN, R.I.
August 9, 1989 at 9:46 AM
TOWN CLERK

MATTHEW P. SULLIVAN
No. 1816
LAND SURVEYOR
JAN 3, 1989

NO.	DATE	REVISION	BY
2	5/10/89	REVD BEARINGS, ADD NOTES	B.S.
1	5/1/88	ADD EXCLUSIONARY MONUMENT	B.S.

SHEET TITLE	PROJECT NO.
PLAN OF LAND IN JAMESTOWN, R.I.	
AP 7, LOTS 3, 4, 178, 179	SCALE 1" = 100'
	DATE 12/28/88
PROJECT	DRAWN BY
PREPARED FOR: TOWN OF JAMESTOWN	BB, BS MST
by ISLAND ENGINEERING 18 Southwest Avenue Jamestown, Rhode Island 02835 (401) 423-1200	DRAWING NO. 88470
A DIVISION OF SCHOFIELD BROTHERS, INC.	1 of 1 SHEETS