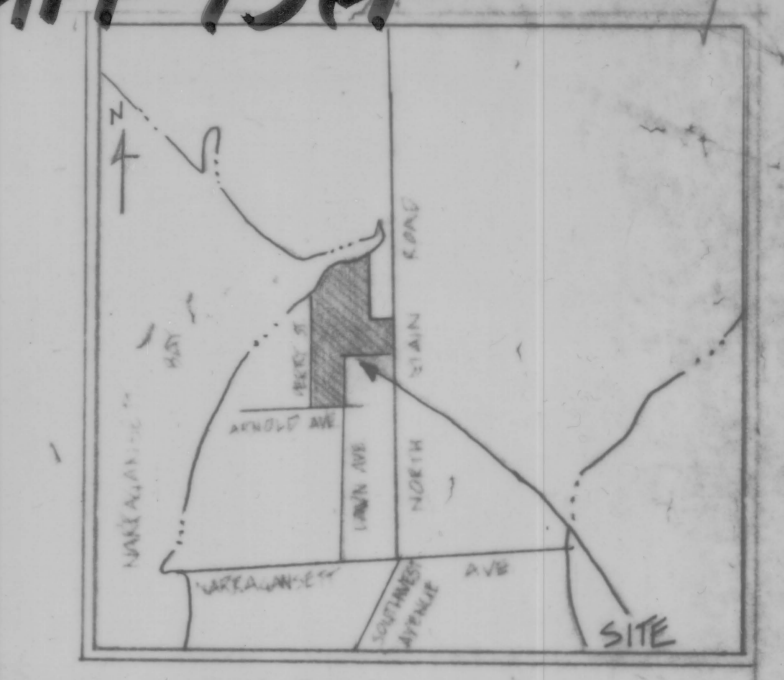
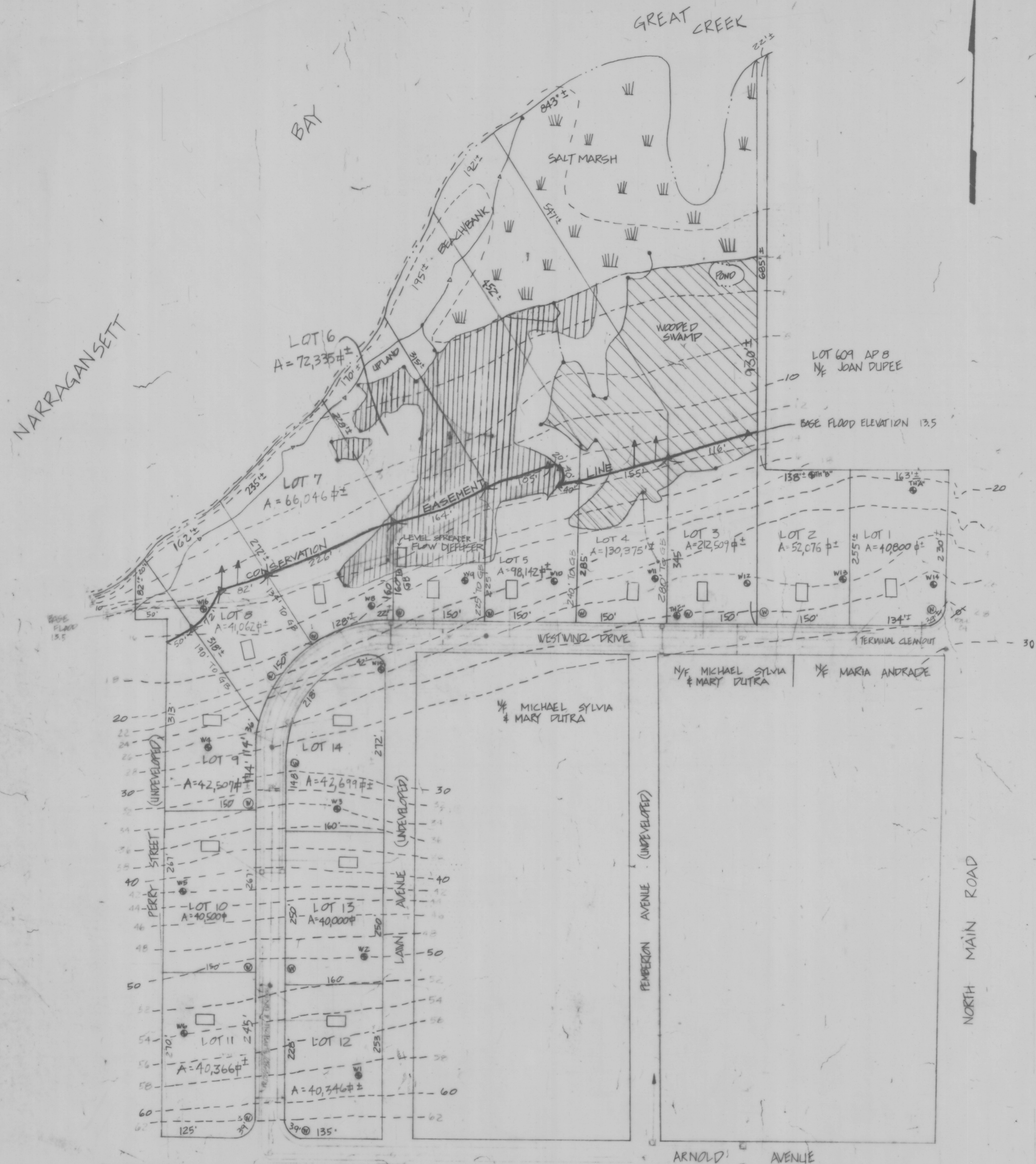


HPF 75A



LOCUS MAP
1" = 1/2 MILE



NOTE:

- 1) THE CONSERVATION EASEMENT LINE DENOTES THE SOUTHERN BOUNDARY OF THE CONSERVATION EASEMENT AREA. THE AREA IS DESCRIBED IN DETAIL IN THE CONSERVATION EASEMENT TO BE RECORDED IN THE OFFICE OF TOWN CLERK OF THE TOWN OF JAMESTOWN.
- 2) GRANITE BOUNDS AS SHOWN, SET OCTOBER 1988 BY ISLAND ENGINEERING.

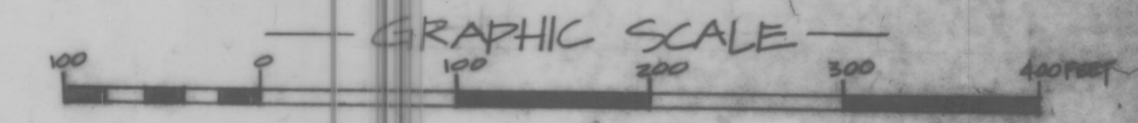
GROUND WATER DATA

V1 15"	V11 13"
V2 15"	V12 23"
V3 15"	V13 6"
V4 SILENT	V14 35"
V5 4'10"	V15 18"
V6 5' T	V16 FILLED WITH ROCKS
V8 8'1"	TH'A 5'5"
V9 15"	TH'B 20"
V10 13"	TH'C 2'9"

TEST PITS READ ON JAN. 8, 1987

LEGEND

- N/F AP A, V, O, S, P, E, W, M, L, H, C, B, G, R, T, F, D, U, N, I, T, S
- NON OR FORMERLY OF ASSESSORS PLAT AREA
- WATER TABLE TEST SQUARE FEET
- TELEPHONE POLE
- TEST PIT
- SALT MARSH
- EXISTING CONTOURS
- WATER LINE
- AREA SUBJECT TO STORM FLOODAGE
- AREA SUBJECT TO FLOODING
- WOODED SWAMP
- WETLANDS STARTING POINTS & CORNERS
- PROCEDED WELL
- CATCH BASIN
- STORM DRAIN
- INLINE FLUSHING CONNECTION
- SEWAGE MANHOLE
- BEACH BANK
- GRANITE BOUND SET



CONSERVATION EASEMENT

RECEIVED FOR RECORD IN JAMESTOWN, R.I.
JULY 26, 1989 at 3070 M.
Peter L. Ryan, TOWN CLERK

PETER L. RYAN
NO. 9372
REGISTERED PROFESSIONAL ENGINEER

NOTE:
WETLAND DELINEATED BY
WETLANDS MANAGEMENT SPECIALISTS, INC.

6	7/22/89	ADD DISTANCE TO GRANITE BOUND	B.S.
5	11/88	ADD GRANITE BOUNDS	B.S.
4	3/88	REMOVE WETLAND SEEBACK LINE	B.S.
3	3/88	CONSERVATION EASEMENT	B.S.C.T.
2	10/21/87	REMOVE PORTION OF EASEMENT	B.S.C.T.
1	10/19/87	MODIFY AREA SUBJECT TO FLOODING	B.S.C.T.

WETLANDS & GWT PLAN
LOTS 66, 64, 68A, 71, 76, 72, 79, 84, 7, 84B, 85, 85A, 85B, 85C, 85D, 85E, 85F, 85G, 85H, 85I, 85J, 85K, 85L, 85M, 85N, 85O, 85P, 85Q, 85R, 85S, 85T, 85U, 85V, 85W, 85X, 85Y, 85Z, 86, 87, 88, 89, 90, 91, 92, 93, 94, 95, 96, 97, 98, 99, 100

JAMESTOWN ESTATES SECTION II

ISLAND ENGINEERING
18 Southwest Avenue
JAMESTOWN, RHODE ISLAND 02835
(401) 323-1200

12 x 12