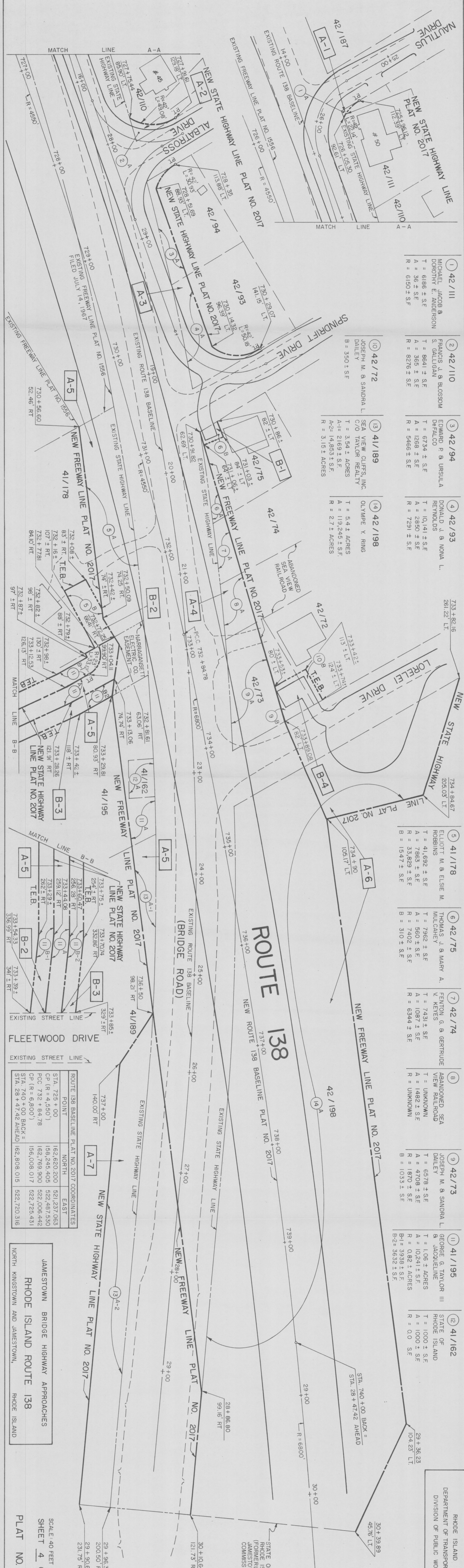


RHODE ISLAND
DEPARTMENT OF TRANSPORTATION
DIVISION OF PUBLIC WORKS

- ① 42/111 MICHAEL JACOB & DOROTHY E. ANDERSON
T = 6186 ± S.F.
A = 36 ± S.F.
R = 6150 ± S.F.
- ② 42/110 FRANCIS J. & BLOSSOM S. GALLIGAN
T = 8641 ± S.F.
A = 365 ± S.F.
R = 8276 ± S.F.
- ③ 42/94 EDWARD P. & URSULA DEPALCO
T = 6734 ± S.F.
A = 1268 ± S.F.
R = 5466 ± S.F.
- ④ 42/93 DONALD J. & NONA L. REYNOLDS
T = 10,141 ± S.F.
A = 2850 ± S.F.
R = 7291 ± S.F.
- ⑤ 41/178 ELLIOTT M. & ELSIE M. ROBBINS
T = 41,692 ± S.F.
A = 7865 ± S.F.
R = 33,829 ± S.F.
B = 15,477 ± S.F.
- ⑥ 42/75 THOMAS J. & MARY A. MULCAHEY
T = 7962 ± S.F.
A = 560 ± S.F.
R = 7402 ± S.F.
B = 310 ± S.F.
- ⑦ 42/74 FENNON G. & GERTRUDE V. KEYES
T = 7431 ± S.F.
A = 1087 ± S.F.
R = 6344 ± S.F.
- ⑧ ABANDONED SEA VIEW RAILROAD
T = UNKNOWN
A = 1482 ± S.F.
R = UNKNOWN
- ⑨ 42/73 JOSEPH M. & SANDRA L. DAILEY
T = 6578 ± S.F.
A = 4708 ± S.F.
R = 1870 ± S.F.
B = 1033 ± S.F.
- ⑩ 41/195 GEORGE G. TAYLOR III & JACQUELINE
T = 1,06 ± ACRES
A = 10,241 ± S.F.
R = 0.82 ± ACRES
B-1 = 3938 ± S.F.
B-2 = 3632 ± S.F.
- ⑪ 41/162 STATE OF RHODE ISLAND
T = 1000 ± S.F.
A = 1000 ± S.F.
R = 0.0 S.F.

- ⑩ 42/72 JOSEPH M. & SANDRA L. DAILEY
B = 350 ± S.F.
- ⑬ 41/189 SEA VIEW CLIFFS, INC. C/O TAYLOR REALTY
T = 3,54 ± ACRES
A-1 = 2169 ± S.F.
A-2 = 14,853 ± S.F.
R = 3,15 ± ACRES
- ⑭ 42/198 OLYMPIE Y. RING
T = 5,4 ± ACRES
A = 119,245 ± S.F.
R = 2,7 ± ACRES



ROUTE 138 BASELINE PLAT NO. 2017 COORDINATES	POINT	NORTH	EAST
STA. 725 + 00		162,620.200	521,237.063
CP (R = 4,550')		158,245.405	522,487.530
PCC 732 + 84.78		162,769.900	522,006.442
CP (R = 6,800')		156,008.017	522,725.431
STA. 740 + 00 BACK =			
STA. 28 + 47.42 AHEAD =		162,808.015	522,720.316

JAMESTOWN BRIDGE HIGHWAY APPROACHES	POINT	NORTH	EAST
		29 + 96.36	200.50' RT
		29 + 90.60	231.75' RT

PLAT NO. 2017

SHEET 4 OF 5

SCALE: 40 FEET PER INCH