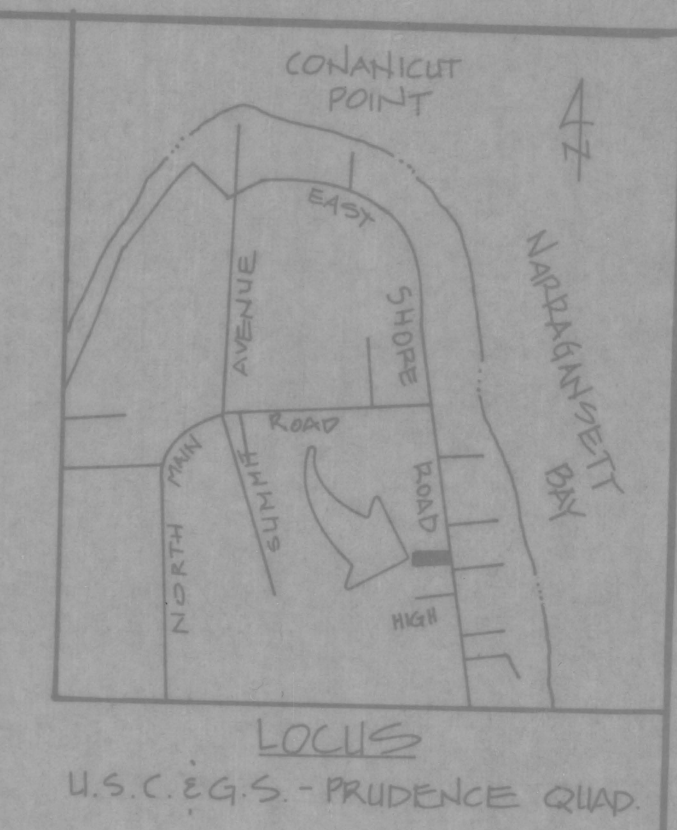
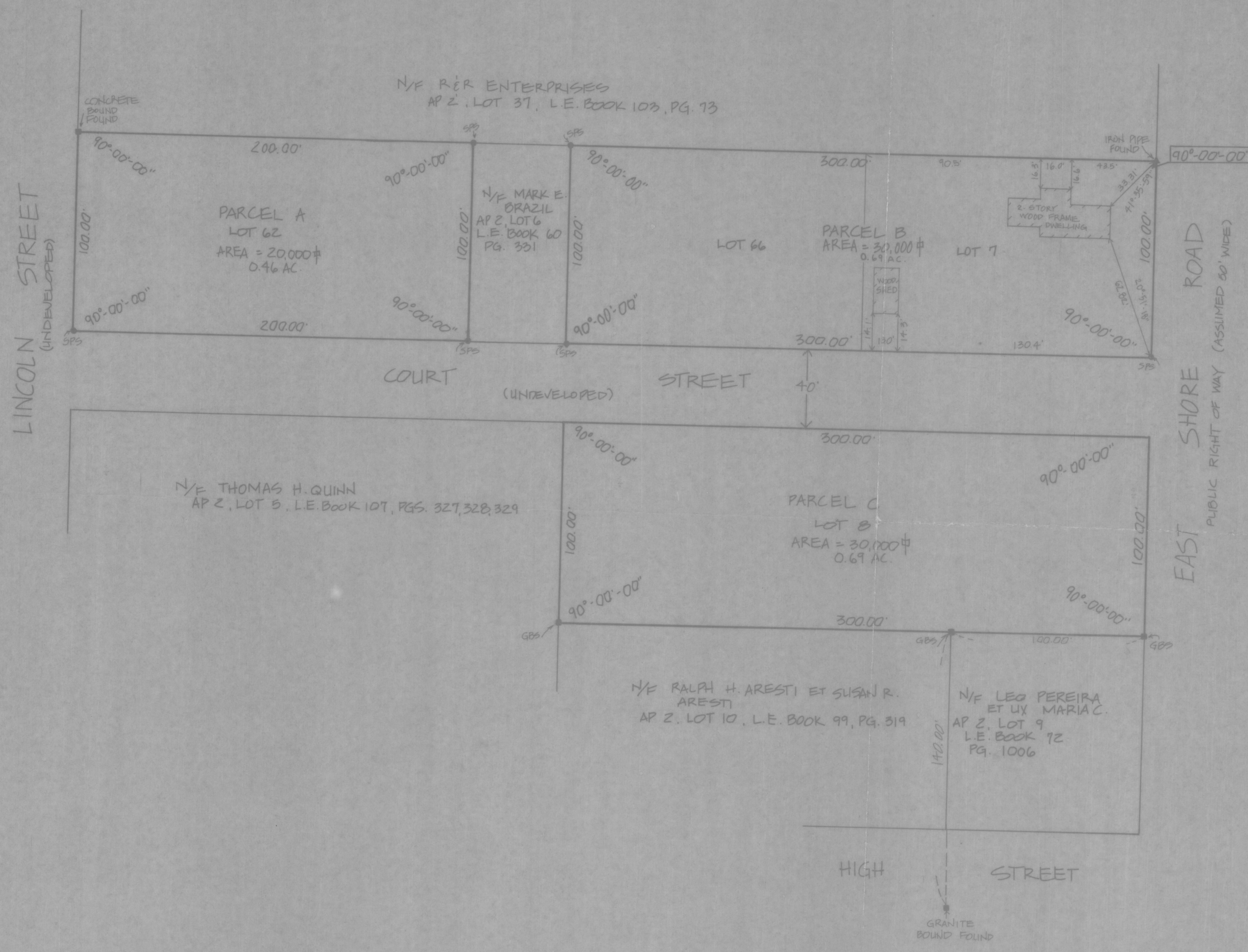


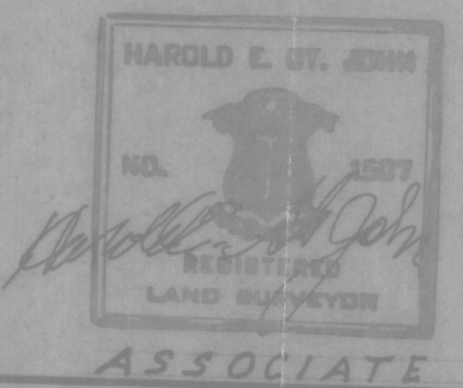
HPF 68B



- LEGEND**
- N/F NOW OR FORMERLY OF
 - AP ASSESSORS PLAT
 - # SQUARE FEET
 - L.E. LAND EVIDENCE
 - S.P.S. STEEL PIN SET
 - G.B.S. GRANITE BOUND SET

REFERENCE: PLAN ENTITLED "CONANICUT PARK RHODE ISLAND" DRAWN BY JOHN H. MULLIN, TOPOGRAPHICAL ENGINEER, NEWPORT, R.I. MARCH, 1873

RECEIVED FOR RECORD IN JAMESTOWN, R.I.
 APRIL 6, 1989 at 10:11 A.M.
 [Signature] TOWN CLERK
 50.00 1980



NO.	DATE	REVISION	BY
PROJECT TITLE PLAN OF LAND JAMESTOWN, R.I. AP 2, LOTS 6, 7, 8			PROJECT NO. 01023
PREPARED FOR: WILLIAM BRAZIL			SCALE 1" = 40'
ISLAND ENGINEERING 18 Southwest Avenue Jamestown, Rhode Island 02835 (401) 423-1200			DATE 1/4/88
DRAWING NO. 00467			DRAWN BY B.S.
CHECKED BY M.S.T.			DATE 1/4/88
OF 1 SHEETS			SHEET NO. 01023