

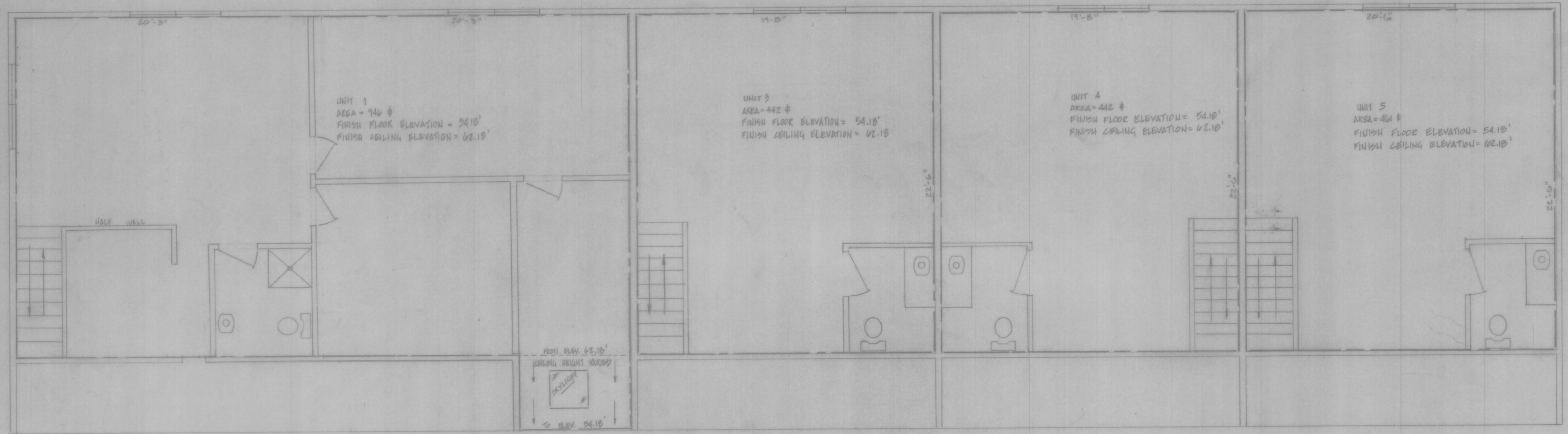
HPF55B

7/1/00

TOMMY CHALK

Project for I. R. International in division
November 9, 1994
6
between 1st and 2nd
in
of
to

380e



SECOND FLOOR PLAN

HIGH TIDE TRADE CENTER CONDOMINIUM



NO.	DATE	REVISION	BY
1	NOV 24	DIMENSIONS AND WALL LOCATIONS	T. TURNER

SHEET TITLE SECOND FLOOR PLAN		PROJECT NO. SCALE DATE DRAWN BY CHECKED BY
PROJECT HIGH TIDE TRADE CENTER CONDOMINIUM CLINTON AVENUE, JAMESTOWN, RHODE ISLAND DEVELOPED BY: PAUL A. AND ELSIE P. ROBERTSON		DRAWING NO. 3 OF 3 SHEETS
ISLAND ENGINEERING 2 Narragansett Avenue JAMESTOWN, RHODE ISLAND 02835 (401) 423-1200		

High Tide Trade Center
High Tide Trade Center