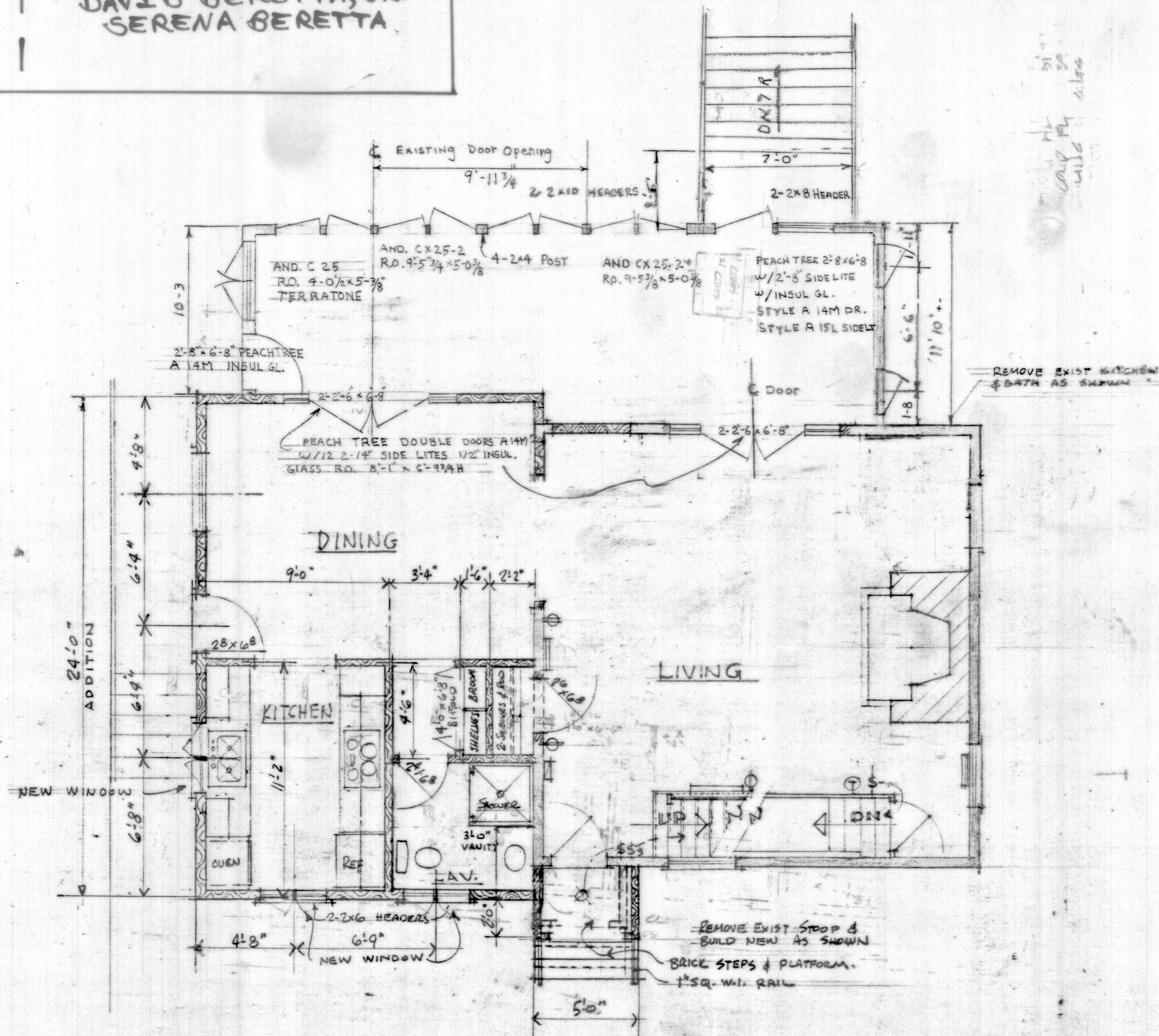


EAST PASSAGE CONDOMINIUM
11-13 WALCOTT AVENUE
JAMESTOWN, RHODE ISLAND

UNIT "B"
13 WALCOTT AVENUE
"FIRST FLOOR"

DECLARANTS
NORMAN R. BERETTA
JOYCE A. BERETTA
DAVID BERETTA, JR.
SERENA BERETTA

RECORDING BLOCK



FIRST FLOOR
SCALE 1/4" = 1'-0"

RECEIVED FOR RECORD IN JAMESTOWN, R.I.
JUN 10, 1987
Lair E. Combs, TOWN CLERK
15 30 00

HPF 47B(BRCH)

A