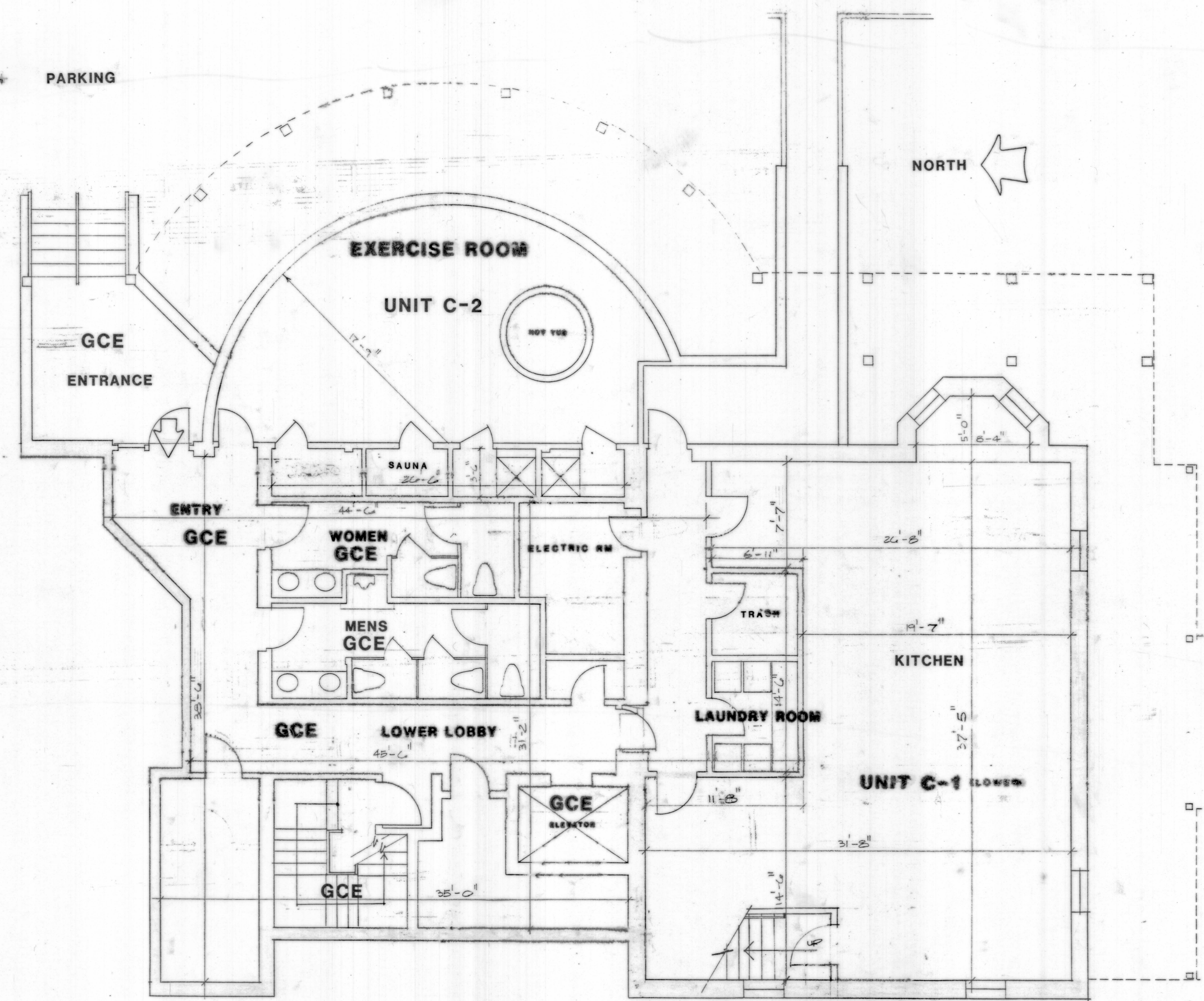


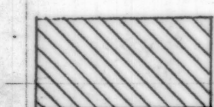
SWIMMING POOL + PARKING



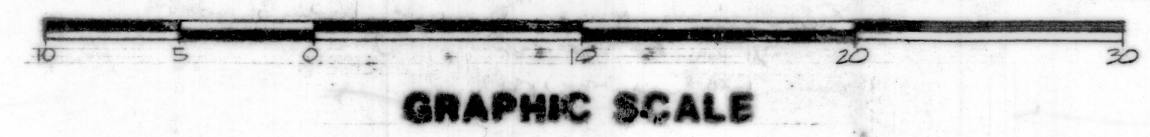
CERTIFICATION IN ACCORDANCE WITH R.I.G.L. 34-36.1-2.09 (A) THRU (F)
I HEREBY CERTIFY THAT THESE PLATS AND PLANS CONTAIN ALL
THE INFORMATION REQUIRED BY R.I.G.L. 34-36.1-2.09 (A) THRU (F)
FOR THE CONDOMINIUM.
DATED: 12/17/86 SIGNED: *John Smyth*
JOHN SMYTH, ARCHITECT, A.I.A.



LEGEND:

-  DENOTES LIMITED COMMON ELEMENT
- LCE = LIMITED COMMON ELEMENT**
- GCE = GENERAL COMMON ELEMENT**
- FLOOR ELEVATION = 19.88 MSL**
- CEILING ELEVATION = 20.80 MSL**

LOWER FLOOR PLAN
THE BAY VOYAGE CONDOMINIUM
CONANICUS AVENUE
JAMESTOWN, RHODE ISLAND
SCALE: (SEE GRAPHIC SCALE) SHEET 2 OF 5 DATE: 12/15/86
JOHN SMYTH : ARCHITECT : NEWPORT



HPF42B(BRCA)