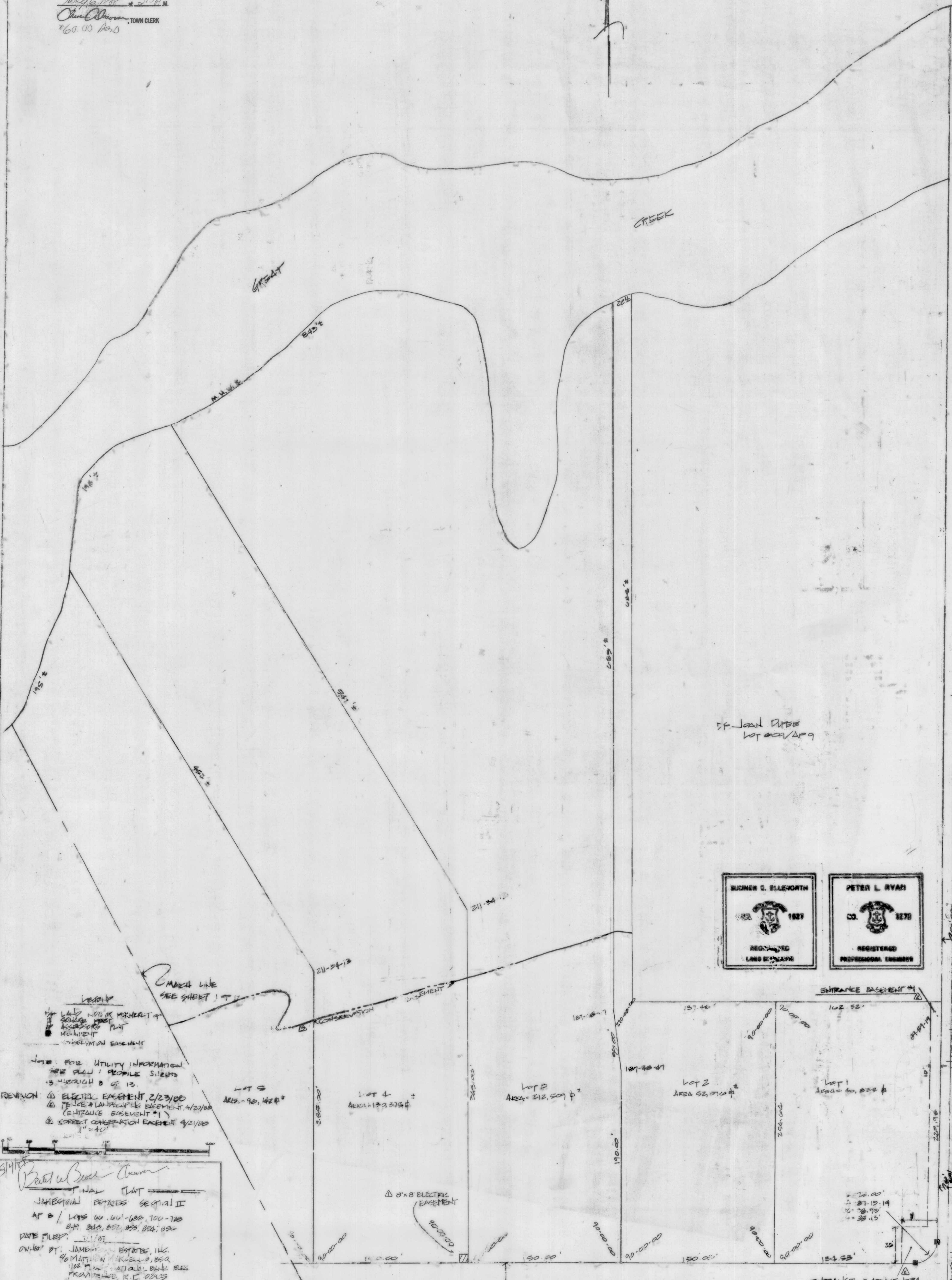


RECEIVED FOR RECORD IN JAMESTOWN, R.I.
MAY 16, 1988 at 2:15 P.M.
TOWN CLERK
\$60.00 F.S.D.



REVISION
① ELECTRICAL EASEMENT 2/23/88
② FENCE & LANDSCAPING EASEMENT 4/22/88 (ENTRANCE EASEMENT #1)
③ STREET CONSERVATION EASEMENT 4/21/88 " = 40'

Barbara A. Ryan
FINAL PLAT
JAMESTOWN ESTATES SERIAL II
AP B / LOTS 00, 001-009, 700-709
DATE FILED: 5/11/88
OWNED BY: JAMESTOWN ESTATES, INC.
DESIGNED BY: MICHAEL SYLVA & MARY DUTRA
REGISTERED PROFESSIONAL ENGINEER
SUNSHINE BELLWORTH, R.I.

LOT 3
AREA = 90,142 sq ft

LOT 4
AREA = 172,375 sq ft

LOT 5
AREA = 212,509 sq ft

LOT 2
AREA 52,070 sq ft

LOT 1
AREA 60,853 sq ft

FOR GENERAL NOTES SEE SHEET 10F12

MICHAEL SYLVA & MARY DUTRA
LOT 109 / APB

MARIA ANGRACE
LOT 709 / AP B

HAF50A(BRC16)
TOWN OF JAMESTOWN