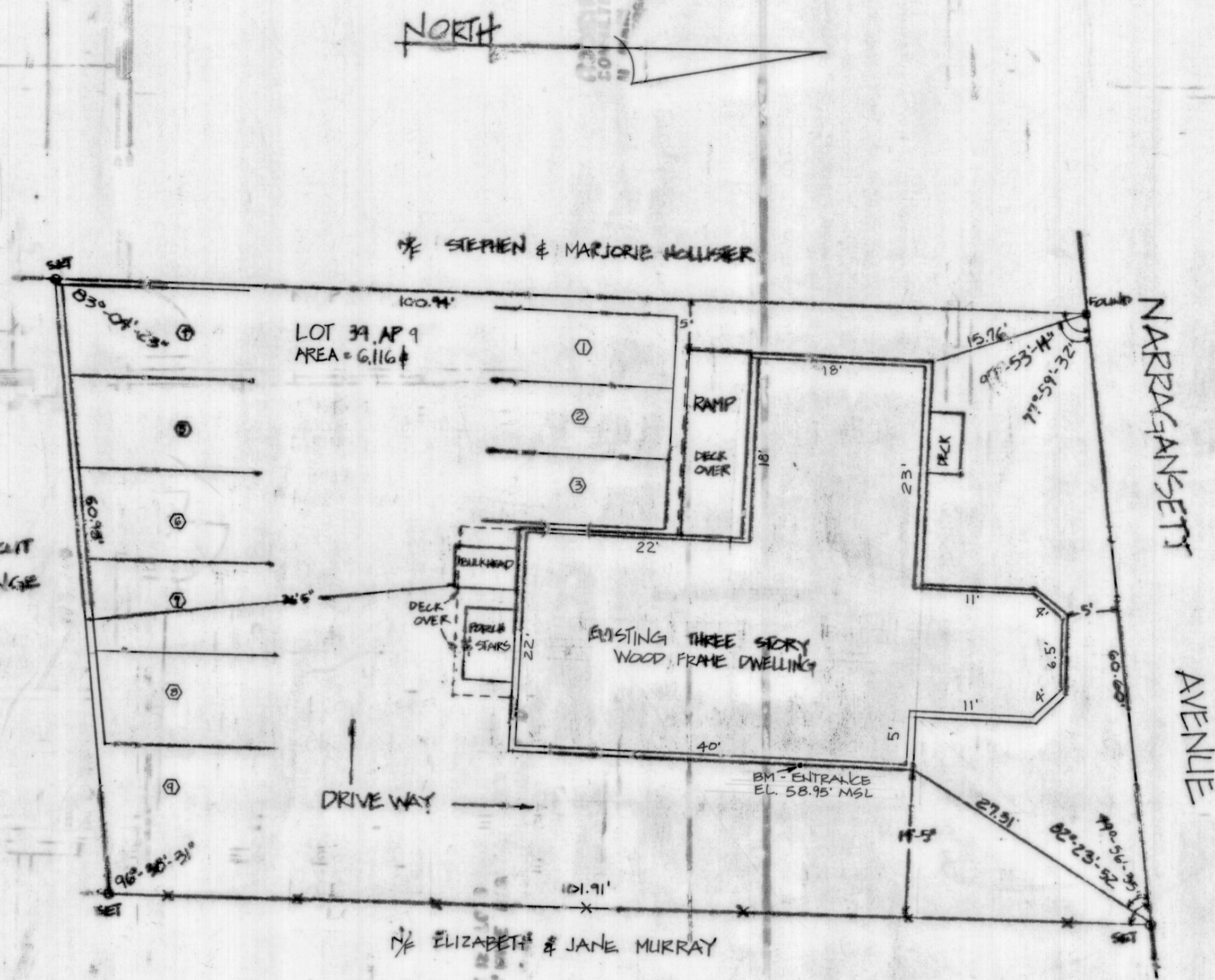


COMMON AREA:

- 1) ALL SIDEWALK, DRIVEWAY AND YARD AREAS.
- 2) RAMP ON SOUTH SIDE OF BUILDING.
- 3) BULKHEAD ENTRY TO BASEMENT.
- 4) ALL INTERIOR STAIRWAYS AND HALLWAYS NOT WITHIN A UNIT.
- 5) ALL BASEMENT AREAS NOT PART OF A UNIT OR ASSIGNED TO A UNIT AS A LIMITED COMMON AREA.

LIMITED COMMON AREA:

AREA	UNIT DESIGNATED AREA
PARKING SPACE 1	TOWNHOUSE A
PARKING SPACE 4	TOWNHOUSE B
PARKING SPACE 2	GUEST A & B
PARKING SPACES 3-9	OFFICE UNIT



LEGEND

N	NON OR FORMERLY OF
AP	ASSESSOR'S PLAT
+	SQUARE FEET
—	FENCE LINE
○	PARKING SPACE
●	PIN
□	CONCRETE BOUND.
BM	BENCH MARK
MSL	MEAN SEA LEVEL

I, John A. Murphy, Partner, hereby consent to the recordation of the survey map in the Jamestown Condominium Land Evidence Records in witness whereof said John A. Murphy, Partner, has caused these presents to be executed the 4TH day of APRIL, 1988.

TASHTASSUC REALTY
By: JAY ASSOCIATES, Partner
John A. Murphy, Partner

I hereby certify that this plan was prepared from an actual survey of the premises on the ground, that the same shows the location of the boundaries, and all structures thereon; that the dimensions of the structures and the location thereof with respect to the boundaries are as shown; that there are no encroachments by structures appurtenant to adjoining premises upon such premises nor from subject premises unless shown hereon; and that any easements apparent from a visual inspection are delineated hereon.

I certify that this plan contains all information required by Section 34-36.1-2.09 of the Rhode Island General Laws (1980 Reenactment).

State of Rhode Island
In JAMESTOWN, on the 4th day of April, 1988, before me personally appeared John A. Murphy, a Partner of Tashtassuc Realty, a Rhode Island General Partnership, of Jamestown, Rhode Island, to me known and known by me to be the party executing this document. Said John A. Murphy acknowledged said document by his to be his free act and deed on April 4, 1988, in his said capacity.

Sandra C. Lareau
Notary Public

DATED: 22 March 1988 SIGNED: Harold E. St. John, R.L.S.
DATED: 30 March 1988 SIGNED: Peter L. Ryan, P.E.



<p>RECORD OF SURVEY PLAT 11 NARRAGANSETT AVENUE CONDOMINIUM OWNED BY: TASHTASSUC REALTY, JAMESTOWN, R.I.</p>		<p>ISLAND ENGINEERING 65 NORTH ROAD JAMESTOWN, R.I.</p>	<p>SCALE: 1"=10' DATE: 12/7/87 SHEET 1 OF 3</p>
--	--	---	---

HPF 278 (BRC17)

MY COMMISSION EXPIRES JULIE 30, 1991