

CONSERVATION PLAN OF LAND

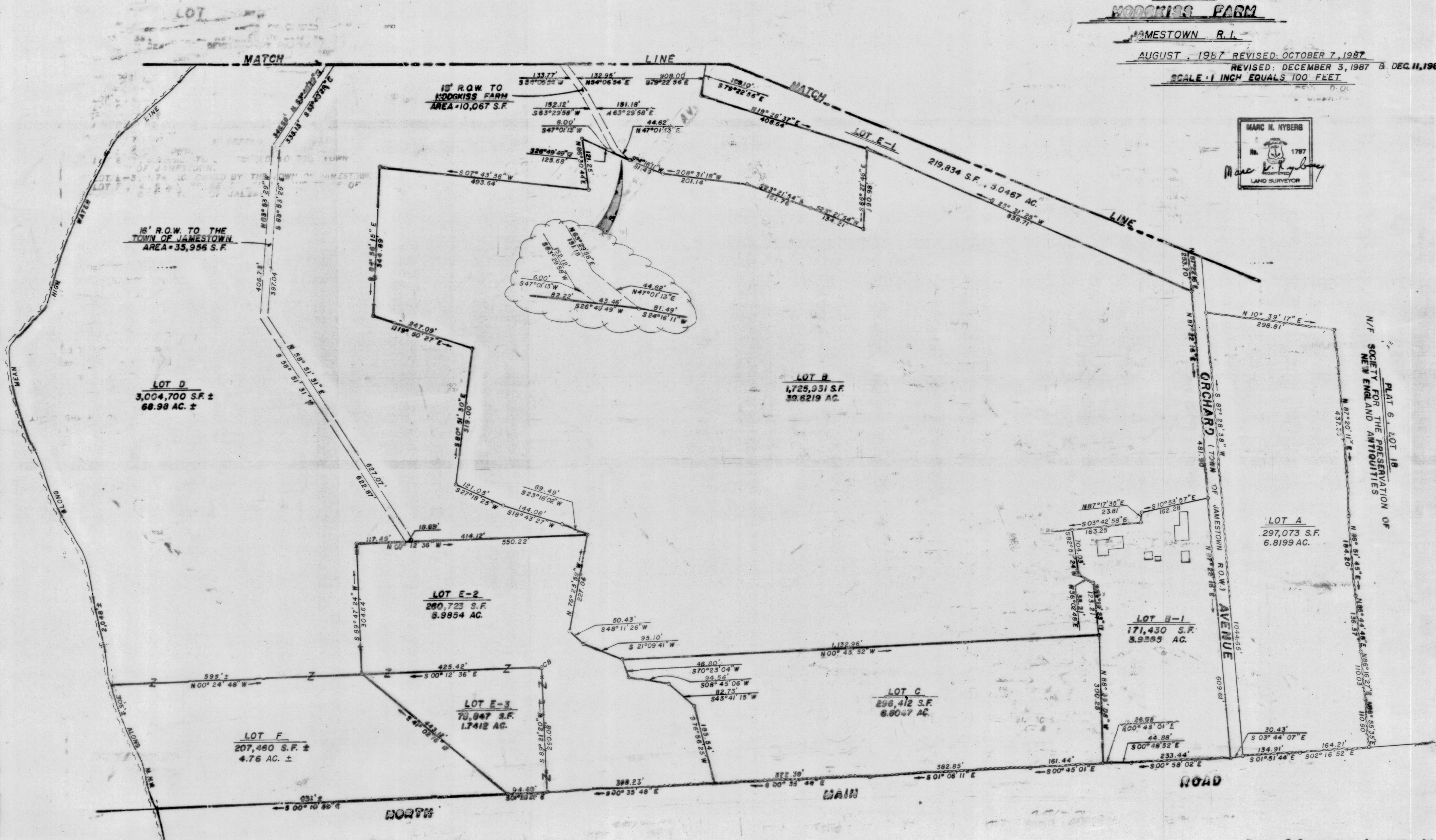
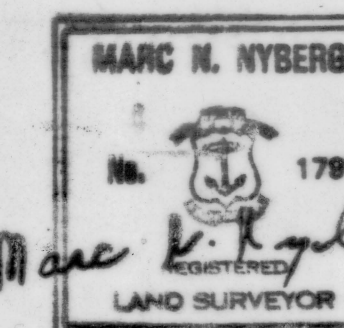
FOR
WOODKISS FARM

JAMESTOWN R.I.

AUGUST, 1987 REVISED: OCTOBER 7, 1987

REVISED: DECEMBER 3, 1987 & DEC. 11, 1987

SCALE: 1 INCH EQUALS 100 FEET



PLAT 6, LOT 18
N/F SOCIETY FOR THE PRESERVATION OF
NEW ENGLAND ANTIQUITIES

LOT A
297,073 S.F.
6.8199 AC.

LOT E-1
171,430 S.F.
3.9355 AC.

LOT C
296,412 S.F.
6.8007 AC.

LOT E-2
260,723 S.F.
5.9854 AC.

LOT E-3
73,847 S.F.
1.7412 AC.

LOT F
207,460 S.F. ±
4.76 AC. ±

LOT D
3,004,700 S.F. ±
68.98 AC. ±

15' R.O.W. TO
WOODKISS FARM
AREA = 10,067 S.F.

15' R.O.W. TO THE
TOWN OF JAMESTOWN
AREA = 35,956 S.F.

HPF 21B (BRO 25)

ROBERT C. COURNOYER & ASSOCIATES, INC.
CONSULTING ENGINEERS AND LAND SURVEYORS
11 MAIN STREET
SLATERSVILLE, RHODE ISLAND 02876