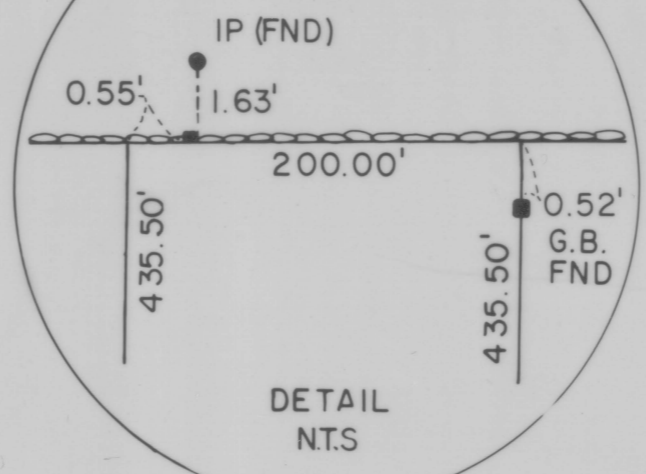
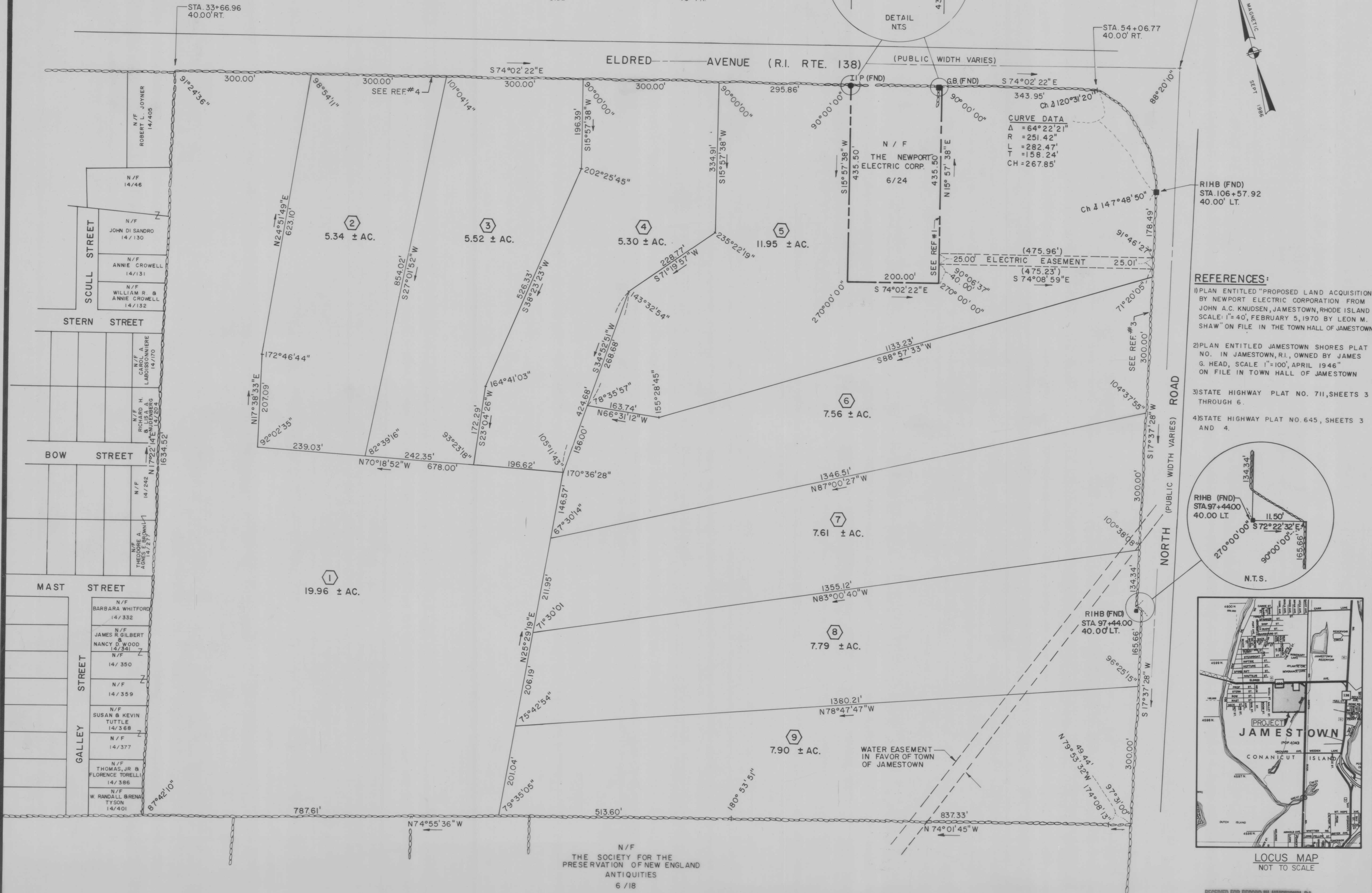
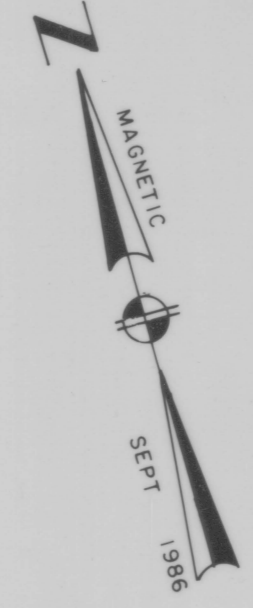


ZONING CLASSIFICATION RR-200

RURAL RESIDENTIAL	
MINIMUM LOT	200,000 S.F.
MINIMUM FRONTAGE	300 L.F.
SETBACKS	
FRONT	50 F.T.
REAR	50 F.T.
SIDE	40 F.T.

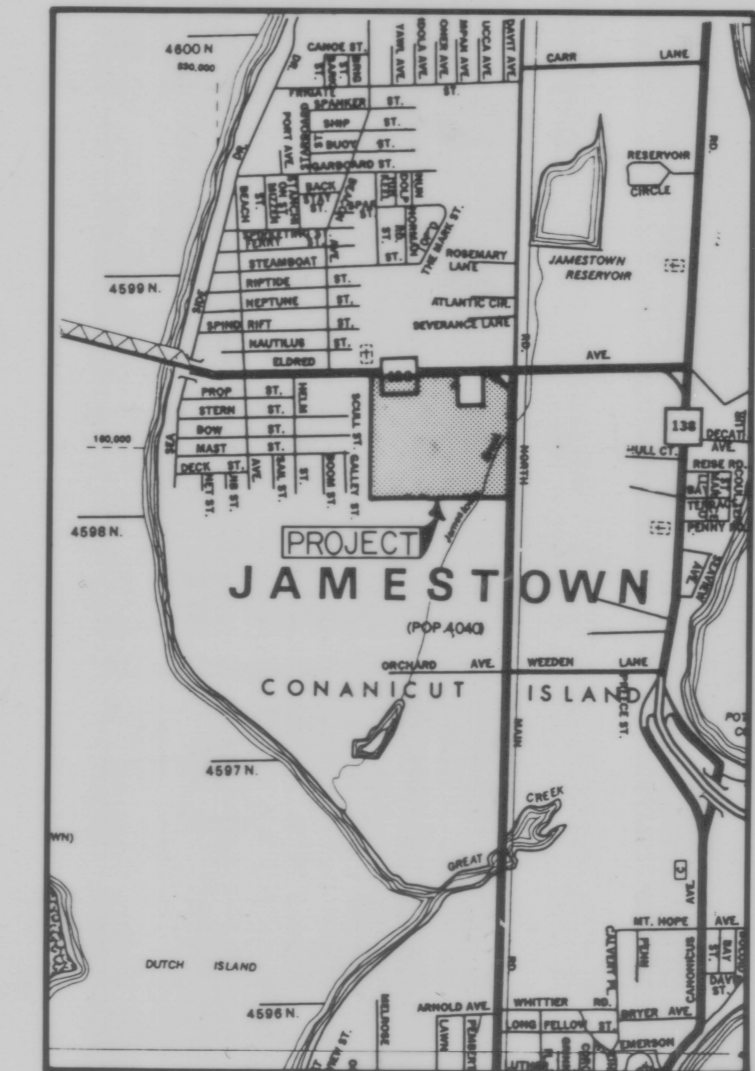
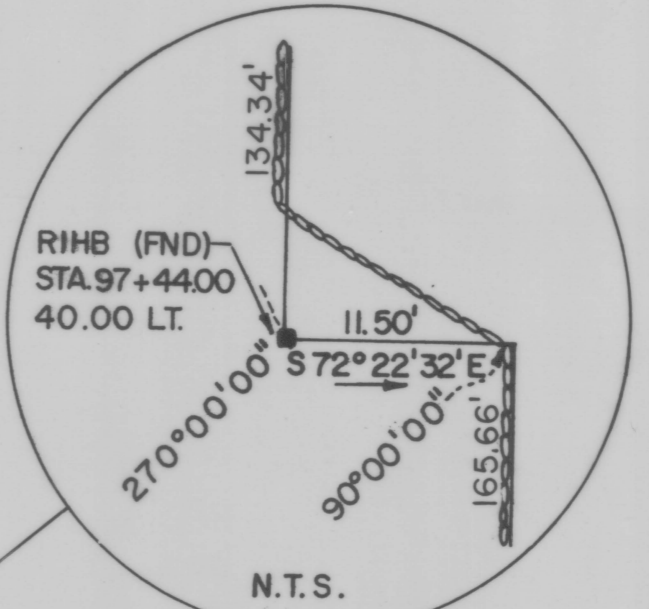


EQU. STA. 55+90.69 ELDRED AVE. =
STA. 109+29.93 NORTH ROAD



CURVE DATA
 $\Delta = 64^{\circ}22'21''$
 $R = 251.42'$
 $L = 282.47'$
 $T = 158.24'$
 $CH = 267.85'$

- REFERENCES:**
- 1) PLAN ENTITLED "PROPOSED LAND ACQUISITION" BY NEWPORT ELECTRIC CORPORATION FROM JOHN A.C. KNUDSEN, JAMESTOWN, RHODE ISLAND SCALE: 1"=40', FEBRUARY 5, 1970 BY LEON M. SHAW" ON FILE IN THE TOWN HALL OF JAMESTOWN.
 - 2) PLAN ENTITLED JAMESTOWN SHORES PLAT NO. IN JAMESTOWN, R.I., OWNED BY JAMES G. HEAD, SCALE 1"=100', APRIL 1946" ON FILE IN TOWN HALL OF JAMESTOWN
 - 3) STATE HIGHWAY PLAT NO. 711, SHEETS 3 THROUGH 6.
 - 4) STATE HIGHWAY PLAT NO. 645, SHEETS 3 AND 4.



RECEIVED FOR RECORD IN JAMESTOWN, R.I.
 March 23, 1987
 Lois E. Coon, TOWN CLERK
 #30.00

PLAN FOR
CEDAR HILL FARM
 SITUATED IN
 JAMESTOWN, R.I.
 PREPARED FOR: WILDFIELD ASSOCIATES

NO.	REVISION	BY	DATE



GAROFALO
 LEONARD A. GAROFALO & ASSOCIATES, INC.
 ENGINEERS/SURVEYORS/PLANNERS

780 JEFFERSON BOULEVARD
 WARWICK, RHODE ISLAND
 401-738-1000 02887

JOB NO. 2618	DRAWN BY BDF
DRWG. NO. 2790	CHECKED JD
SCALE 1"=100'	APPROVED SW
	DATE MAR. 3, 1987

SHEET
1
 OF 1 SHEETS

BRUNING 44 142 65096

HPF-17A(BRC35)

N/F THE SOCIETY FOR THE PRESERVATION OF NEW ENGLAND ANTIQUITIES
 6/18