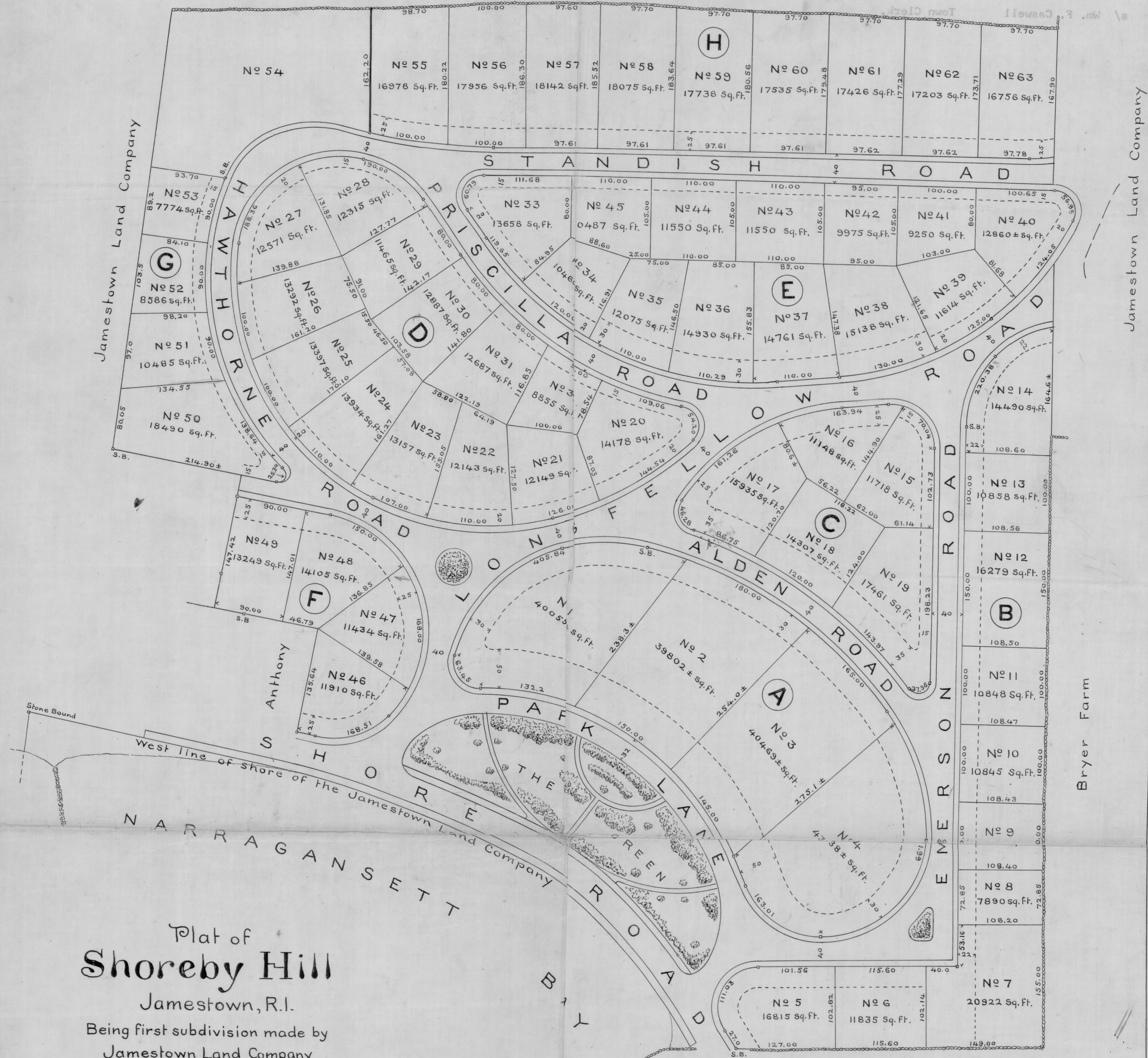


Carr Estate

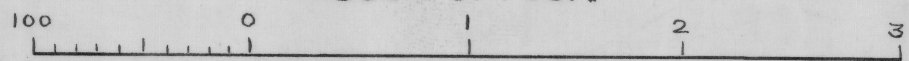
Filed in the Town Clerk's Office
Jamestown, R. I.
Sept. 17th. 1898
Wm. F. Caswell
Town Clerk



Plat of
Shoreby Hill
Jamestown, R.I.

Being first subdivision made by
Jamestown Land Company.

Scale of Feet.



Building line is indicated by dotted lines.
Blocks are shown by letter enclosed in circle.

Office of J. P. Cotton, C.E.
Newport, R. I. Sept. 15, 1898.

Magnetic Meridian

This is to certify that the roads laid out and designated on this plat, excepting the Shore Road, are not dedicated or open to the public, but are private roads held by the Jamestown Land Company for the use of owners of lots in said plat, subject to reservations and conditions fully set forth in the conveyances made and to be made by said Company to such owners or purchasers; and it is further certified that, with the consent of all abutting proprietors upon any road or part thereof indicated upon said plat, the boundaries or location of such road may be changed at any time, or such road may be wholly closed.

In testimony whereof said Jamestown Land Company has caused these presents to be executed by its President and attested by its Secretary with its corporate seal this sixteenth day of September, 1898.

Attest: *B. Haussig* Secretary
John C. Smith President.

HPF 118(BRC 45)