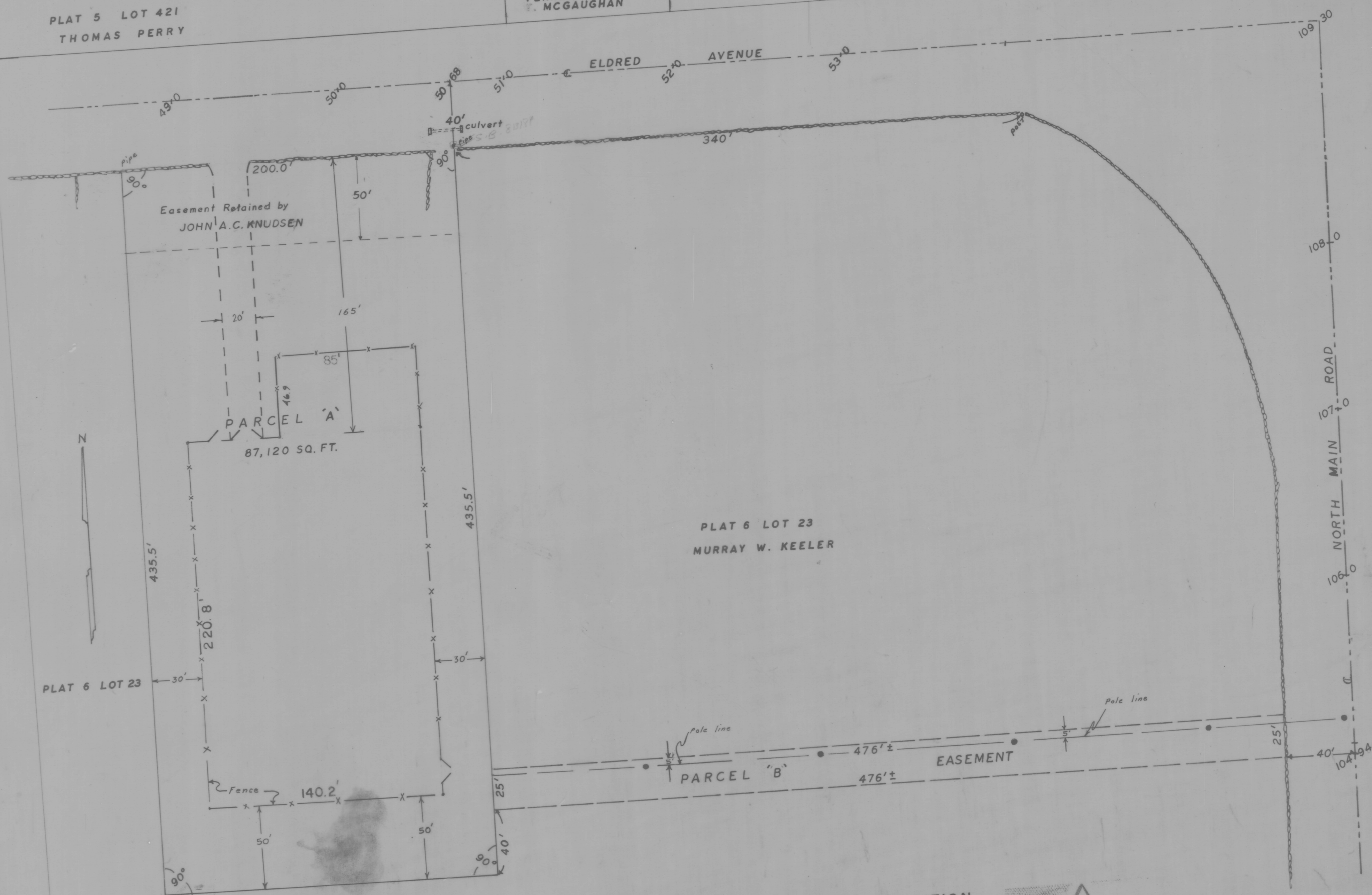


PLAT 5 LOT 421  
THOMAS PERRY

PLAT 5 LOT 422  
TERRENCE  
MCGAUGHAN

PLAT 5 LOT 423  
GENNARO MALGIERI



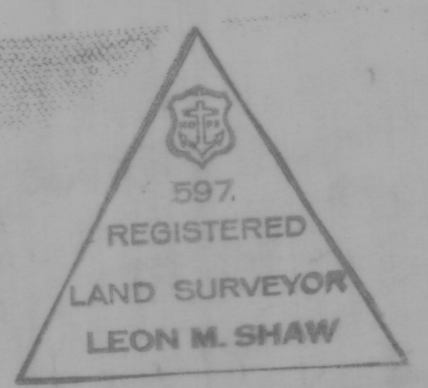
PLAT 6 LOT 23

PLAT 6 LOT 23  
MURRAY W. KEELER

PLAT 6 LOT 23

Received in Jamestown, R. I. for record  
 in Volume 18 of Land Records  
 at 10:30 A.M. on FEBRUARY 5, 1970  
 Town Clerk

PROPOSED LAND ACQUISITION  
 BY  
 NEWPORT ELECTRIC CORPORATION  
 FROM  
 JOHN A.C. KNUDSEN  
 JAMESTOWN, RHODE ISLAND



SCALE 1" = 40'  
 BY-LEON M. SHAW

FEBRUARY 5, 1970  
 REVISED 3/30/70  
 REVISED 8/17/77  
 " " 7-31-84

HPF/08 (BRU47)