

Revised Plat 19. 22

Revised Plat 19. 22

JAMESTOWN SHORES PLAT NO. 4 REVISED

IN JAMESTOWN, R.I.

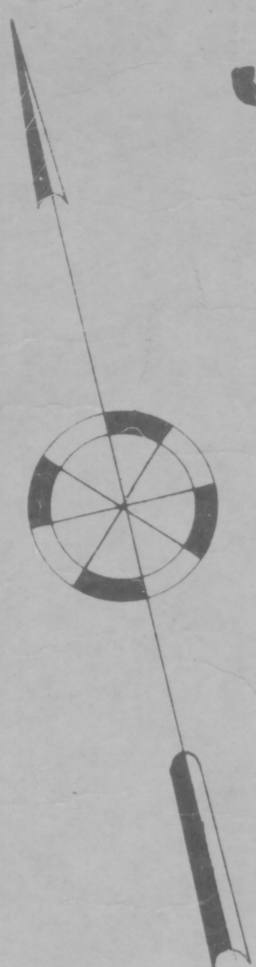
OWNED BY

JAMES G. HEAD

Scale 1" = 100'

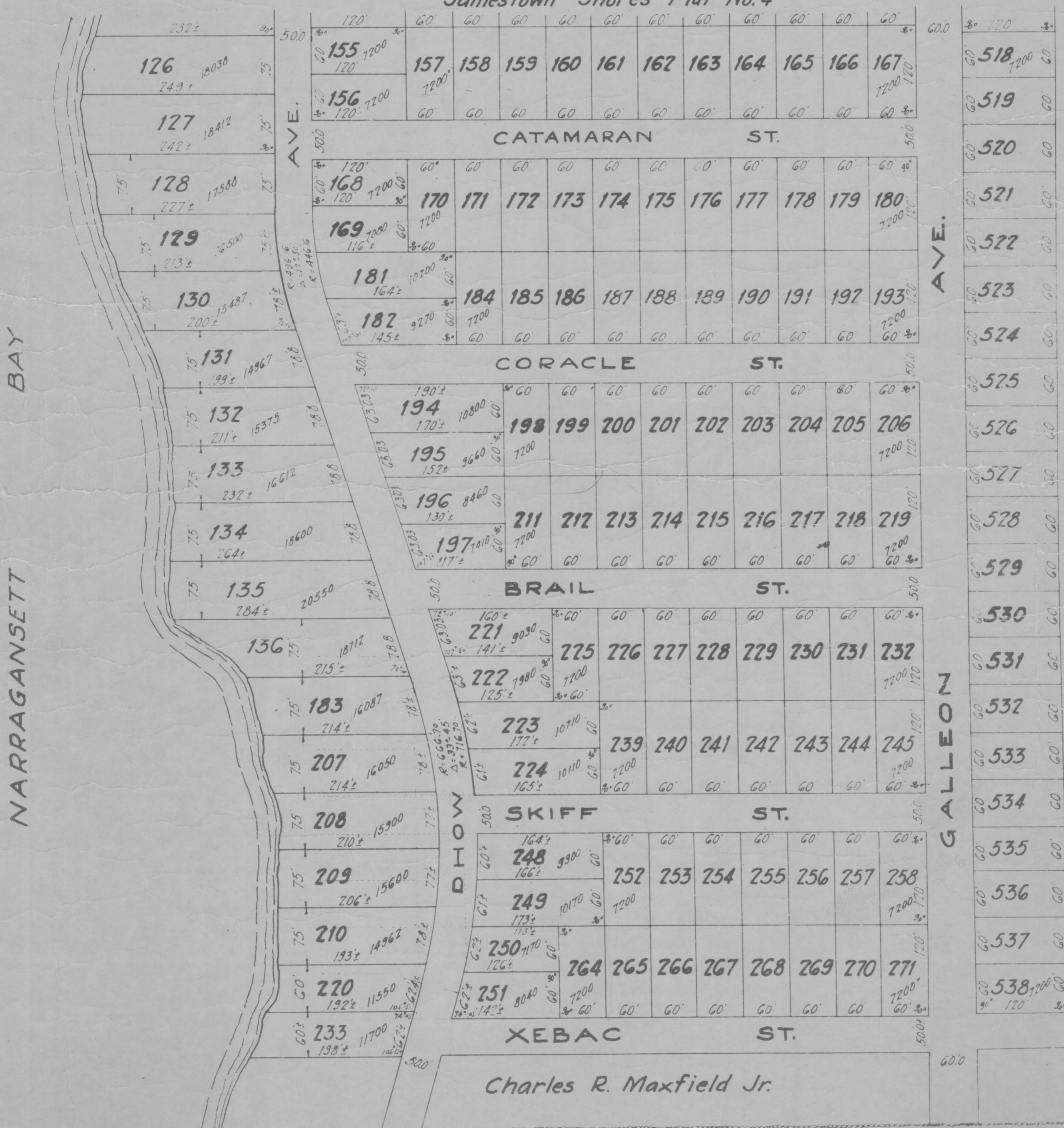
April 1947

E. NEWMAN ENG'R.



Note: The following Lot Numbers in the original Plat have been eliminated:-
234 238 260
235 246 261
236 247 262
237 259 263
The dotted lines indicate original Plat layout.

Jamestown Shores Plat No. 4



Charles R. Maxfield

Revised Plat 19. 22

Revised Plat 19. 22

HPF 2B (BRC 62)