



Jamestown Community Playground Renovation Project

Jamestown Community Playground Renovation Committee
Meghan O'Brien, CEO M.E. O'Brien & Sons

September 18, 2017

How did we get here?

- ▶ 1990 – How Community Playground came to be
 - Grassroots Effort
 - Received Input from local children/students
 - Community Build
 - One of a kind Playground
 - Utilized Green Building Practices well ahead of its time
 - Ship Climber, Zipline, Corkscrew Slide, Etc.
 - Children flocked from around the state to play in Jamestown.
 - ▶ 27 Years of Play Later
 - Served the children of Jamestown and the State of Rhode Island well
 - New Playground Safety Standards, 3 times since 1990 ('91,'97,'10)
 - New Design will provide Jamestown a play space to meet today's codes and play values.
-



Planning for the Next Generation

▶ Initial Capital and Grant Funding

- Capital - \$50K '15-16 Fiscal Year, Additional \$35K in '16-17 Fiscal Year
- 2016 RI DEM Open Space and Recreation Grant - \$100K

▶ Two Public Workshops

- Information on RI DEM Grant Application
- Post-Grant – Public input on Types of new equipment

▶ Outside & Future Funding Sources

- Capital Campaign
 - Ryan J. Bourque – The Jamestown Community Playground Fund
-

Ryan J. Bourque – The Jamestown Community Playground Fund



- ▶ Officer Ryan Bourque, age 24, of the Jamestown Police Department, was traveling home from his patrol shift on May 23, 2016; the one year anniversary of his time on the police force, when he was struck and killed by a wrong way drunk driver along interstate 95. Ryan's family has asked that donation's in Ryan's memory be used to benefit the children of Jamestown through the renovation of the Community Playground.
-

Next Steps

▶ Formation of Committee by Town Council – Feb 2017

- Andy Wade – Parks & Rec, Jennifer Cloud – Library Board, Lee Bourque – Ryan J. Bourque Family, Dick Trask – Arts Center, Matt Bolles – 1990 Playground Build Member, Michelle Bush – At Large, Betty Kinder – At Large, Christina Smith – At Large, Brad Parsons – At Large
- Ad-Hock Members: Lisa Bryer – Planning, Chief Ed Mello & Sargent Mark Esposito – Police Department, Mike Gray – Public Works

▶ Initial Charge

“Town Council of the Town of Jamestown, hereby establish the Community Playground Renovation Committee and vest them with the authority to investigate, research, consult, deliberate and recommend the design and equipment needed for a safe, state-of-the-art Community Playground”

▶ Overview of Committee Accomplishments

- Met 15 times since March 2017
 - Interviewed and Selected a Consultant/Manufacturer
 - Developed an Overall Master Plan for Playground
-

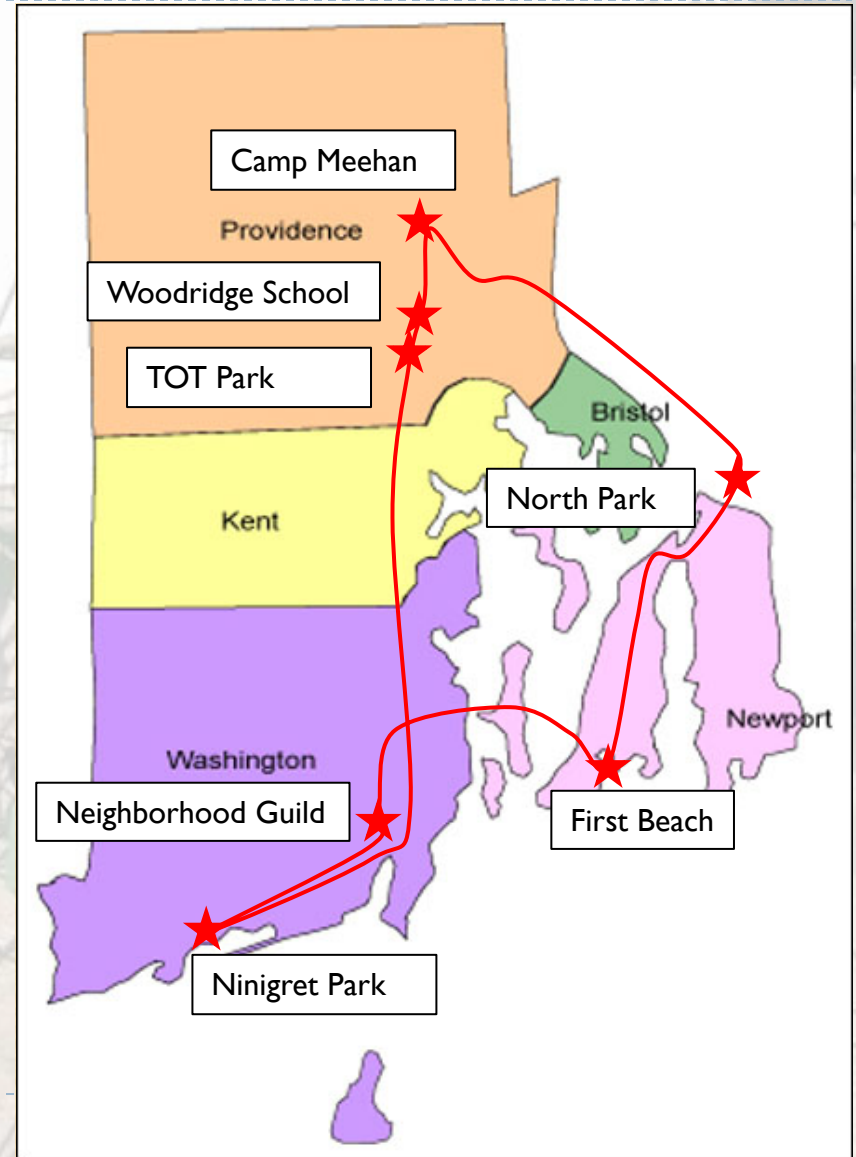
Initial Planning/Development

- ▶ Reviewed Committee charge and goals
- ▶ Review of Melrose School Survey Results
- ▶ Initial Mind Map
- ▶ Received Presentations from Leading Playground Manufacturers (Kompan, BigToys, Landscape Structures)



Initial Planning/Development

- ▶ Consultant/Manufacture Presentations
- ▶ Tour of Playgrounds
- ▶ Interview of Professionals in the field
- ▶ Selection of O'Brien & Sons/Landscape Structures as our Playground Consultant/Manufacture



Why O'Brien & Sons/ Landscape Structures



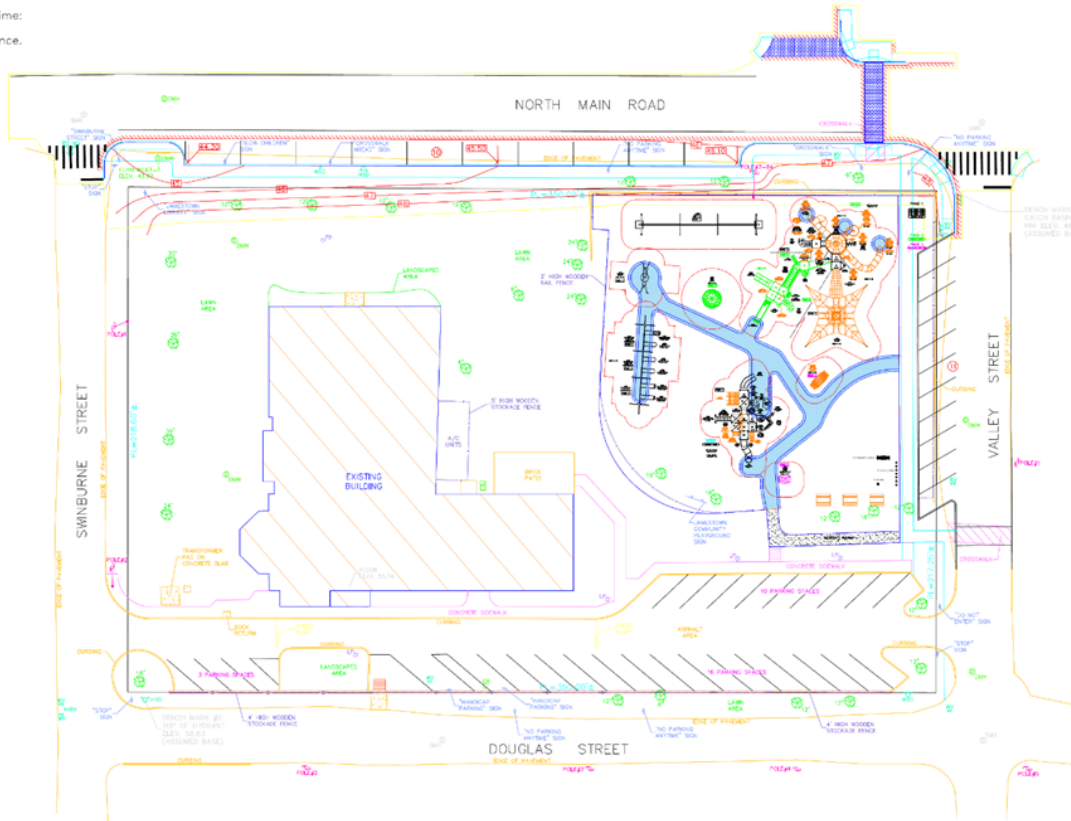
ELEMENTS FOR A GREAT OUTDOORS

- ▶ Family owned and operated since 1929
- ▶ Outstanding reputation for customer service in the industry
- ▶ Materials Matter – Landscape Structures provides the most quality materials when manufacturing playground equipment. This superior level of quality ensures we never have to apologize or make excuses for a mediocre product.
- ▶ Play Value – Landscape Structures provides equipment that challenges kids over and over because the creative nature of their play events ensure that it stays fresh in play appeal.
- ▶ Longevity – Proven to stand the test of time, minimal maintenance
- ▶ Focus put on using recycled and post consumer materials
- ▶ They offset carbon footprint by partnering with American Forest to plant trees.
- ▶ ISO 16001 Environmental Certification since 1998: A guideline on how to meet and exceed the environmental standards in manufacturing & being “Waste Wise”.



Overall Site/Master Plan

Estimated manufacturing time:
9 weeks from the
time of LSI order acceptance.



IT IS THE MANUFACTURER'S OPINION AND INTENT THAT THE USE AND LAYOUT OF THESE COMPONENTS CONFORM WITH THE AMERICAN SOCIETY FOR TESTING AND MATERIALS (ASTM) STANDARD ASTM F1487

THIS PLAY AREA & PLAY EQUIPMENT IS DESIGNED FOR AGES 2-12 YEARS UNLESS OTHERWISE NOTED ON PLAN.

IT IS THE MANUFACTURER'S OPINION THAT THIS PLAY AREA DOES CONFORM TO THE A.S.A. ACCESSIBILITY STANDARDS, ASSUMING AN ACCESSIBLE PROTECTIVE SURFACING IS PROVIDED, AS INDICATED, OR WITHIN THE ENTIRE USE ZONE.

THIS CONSTRUCTION PLAN WAS BASED ON INFORMATION AVAILABLE TO US PRIOR TO CONSTRUCTION. WE MAKE NO REPRESENTATION REGARDING SITE DIMENSIONS, TOPOGRAPHY, EXISTING UTILITIES, SOIL, DRAINAGE, AND DRAINAGE SOLUTIONS SHOULD BE OBTAINED, EVALUATED & LISTED IN THE FINAL RECORDS. PLEASE VERIFY ALL DIMENSIONS OF PLAY AREA, SIZE, ORIENTATION, AND LOCATION OF ALL EXISTING UTILITIES, EQUIPMENT, AND SITE FURNISHINGS PRIOR TO CONSTRUCTION. SLICES SHOULD NOT FACE THE HOT INTERIOR SUN.

CHOOSE A PROTECTIVE SURFACING MATERIAL THAT MEETS A CRITICAL HEIGHT VALUE TO MEET THE MINIMUM FALL HEIGHT FOR THE EQUIPMENT (SEE ASTM F1487 STANDARD) AND/OR SAFETY PERFORMANCE SPECIFICATION FOR PARTICULAR EQUIPMENT FOR PUBLIC USE. SECTION 5 CURRENT REVISIONS, THE SURFACING MUST BE WELL DRAINAGE. IF THE SOIL DOES NOT DRAIN NATURALLY IT MUST BE TILLED OR SLOPED 1/8" TO 1/4" PER FOOT TO A STORM SEWER OR A "TRENCH DRAIN".

ACCESSIBLE PROTECTIVE SURFACING TO BE A COMBINATION OF TYPICAL AND (PROVIDE SLICES PER PLAN)

DESIGNED BY:
CLS
COPYRIGHT: 7/12/2017
LANDSCAPE STRUCTURES, INC.
100 7th STREET SOUTH - PO BOX 108
DELUKE, MINNESOTA 55328
TEL: 1-800-328-6238 FAX: 1-952-972-8251

Date	Previous Drawing #	IN/OUT

5-12 AREA (ALL PHASES COMPLETE)

TOTAL ELEVATED PLAY COMPONENTS	18	REQUIRED	0
TOTAL ELEVATED COMPONENTS ACCESSIBLE BY RAMP	0	REQUIRED	0
TOTAL ELEVATED COMPONENTS ACCESSIBLE BY TRANSFER	11	REQUIRED	9
TOTAL ACCESSIBLE GROUND LEVEL COMPONENTS SHOWN	8	REQUIRED	6
TOTAL DIFFERENT TYPES OF GROUND LEVEL COMPONENTS	4	REQUIRED	4

2-5 AREA (ALL PHASES COMPLETE)

TOTAL ELEVATED PLAY COMPONENTS	10	REQUIRED	0
TOTAL ELEVATED COMPONENTS ACCESSIBLE BY RAMP	0	REQUIRED	0
TOTAL ELEVATED COMPONENTS ACCESSIBLE BY TRANSFER	10	REQUIRED	5
TOTAL ACCESSIBLE GROUND LEVEL COMPONENTS SHOWN	7	REQUIRED	3
TOTAL DIFFERENT TYPES OF GROUND LEVEL COMPONENTS	6	REQUIRED	6



JAMESTOWN COMMUNITY
PLAYGROUND
JAMESTOWN, RI

M.E. O'BRIEN
& SONS, INC
MEGHAN O'BRIEN

SYSTEM TYPE:
PLAYBOASTER

DRAWING #:
106319-1-3



Overall Playground Master Plan



3D Renderings

JAMESTOWN COMMUNITY PLAYGROUND

JAMESTOWN, RI August 30, 2017 106319-1-9-2



*Custom products are shown as conceptual only. *Custom product manufacturing time for this project will be approximately 8 weeks from the time of LSI order acceptance.

©2017 Landscape Structures. All Rights Reserved.


landscape
structures®



FOR A BETTER TOMORROW
WE PLAY TODAY
shapedbyplay.com

Proudly presented by:
MEGHAN O'BRIEN



 **O'BRIEN
& SONS**
ELEMENTS FOR A GREAT OUTDOORS

3D Renderings

JAMESTOWN COMMUNITY PLAYGROUND

JAMESTOWN, RI August 30, 2017 106319-1-9-8



*Custom products are shown as conceptual only. *Custom product manufacturing time for this project will be approximately 8 weeks from the time of LSI order acceptance.

©2017 Landscape Structures. All Rights Reserved.



FOR A BETTER TOMORROW
WE PLAY TODAY
shapedbyplay.com

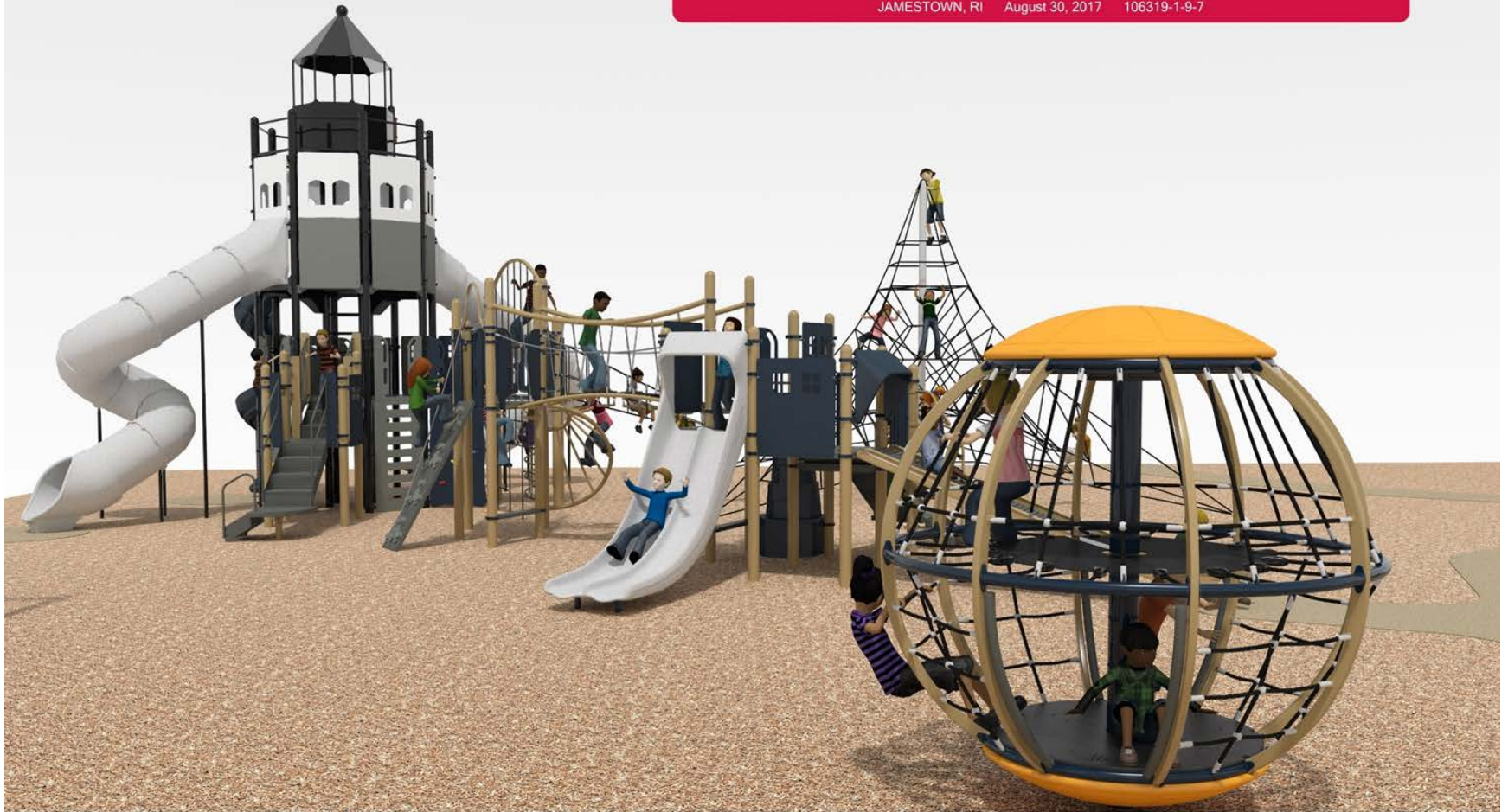
Proudly presented by:
MEGHAN O'BRIEN



3D Renderings

JAMESTOWN COMMUNITY PLAYGROUND

JAMESTOWN, RI August 30, 2017 106319-1-9-7



*Custom products are shown as conceptual only. *Custom product manufacturing time for this project will be approximately 8 weeks from the time of LSI order acceptance.

©2017 Landscape Structures. All Rights Reserved.



FOR A BETTER TOMORROW
WE PLAY TODAY
shapedbyplay.com

Proudly presented by:
MEGHAN O'BRIEN



3D Renderings

JAMESTOWN COMMUNITY PLAYGROUND

JAMESTOWN, RI August 30, 2017 106319-1-9-4



*Custom products are shown as conceptual only. *Custom product manufacturing time for this project will be approximately 8 weeks from the time of LSI order acceptance.

©2017 Landscape Structures. All Rights Reserved.



FOR A BETTER TOMORROW
WE PLAY TODAY
shapedbyplay.com

Proudly presented by:
MEGHAN O'BRIEN



3D Renderings

JAMESTOWN COMMUNITY PLAYGROUND

JAMESTOWN, RI August 30, 2017 106319-1-9-6



*Custom products are shown as conceptual only. *Custom product manufacturing time for this project will be approximately 8 weeks from the time of LSI order acceptance.

©2017 Landscape Structures. All Rights Reserved.

LSI
landscape
structures®



FOR A BETTER TOMORROW
WE PLAY TODAY
shapedbyplay.com

Proudly presented by:
MEGHAN O'BRIEN



**O'BRIEN
& SONS**
ELEMENTS FOR A GREAT OUTDOORS

3D Renderings

JAMESTOWN COMMUNITY PLAYGROUND

JAMESTOWN, RI August 30, 2017 106319-1-9-1



*Custom products are shown as conceptual only. **Custom product manufacturing time for this project will be approximately 8 weeks from the time of LSI order acceptance.

©2017 Landscape Structures. All Rights Reserved.

LSI
landscape
structures



FOR A BETTER TOMORROW
WE PLAY TODAY
shapedbyplay.com

Proudly presented by:
MEGHAN O'BRIEN



**O'BRIEN
& SONS**
ELEMENTS FOR A GREAT OUTDOORS

3D Renderings

JAMESTOWN COMMUNITY PLAYGROUND

JAMESTOWN, RI August 30, 2017 106319-1-9-5



*Custom products are shown as conceptual only. *Custom product manufacturing time for this project will be approximately 8 weeks from the time of LSI order acceptance.

©2017 Landscape Structures. All Rights Reserved.



FOR A BETTER TOMORROW
WE PLAY TODAY
shapedbyplay.com

Proudly presented by:
MEGHAN O'BRIEN



Photo Simulation (Existing)



EXISTING



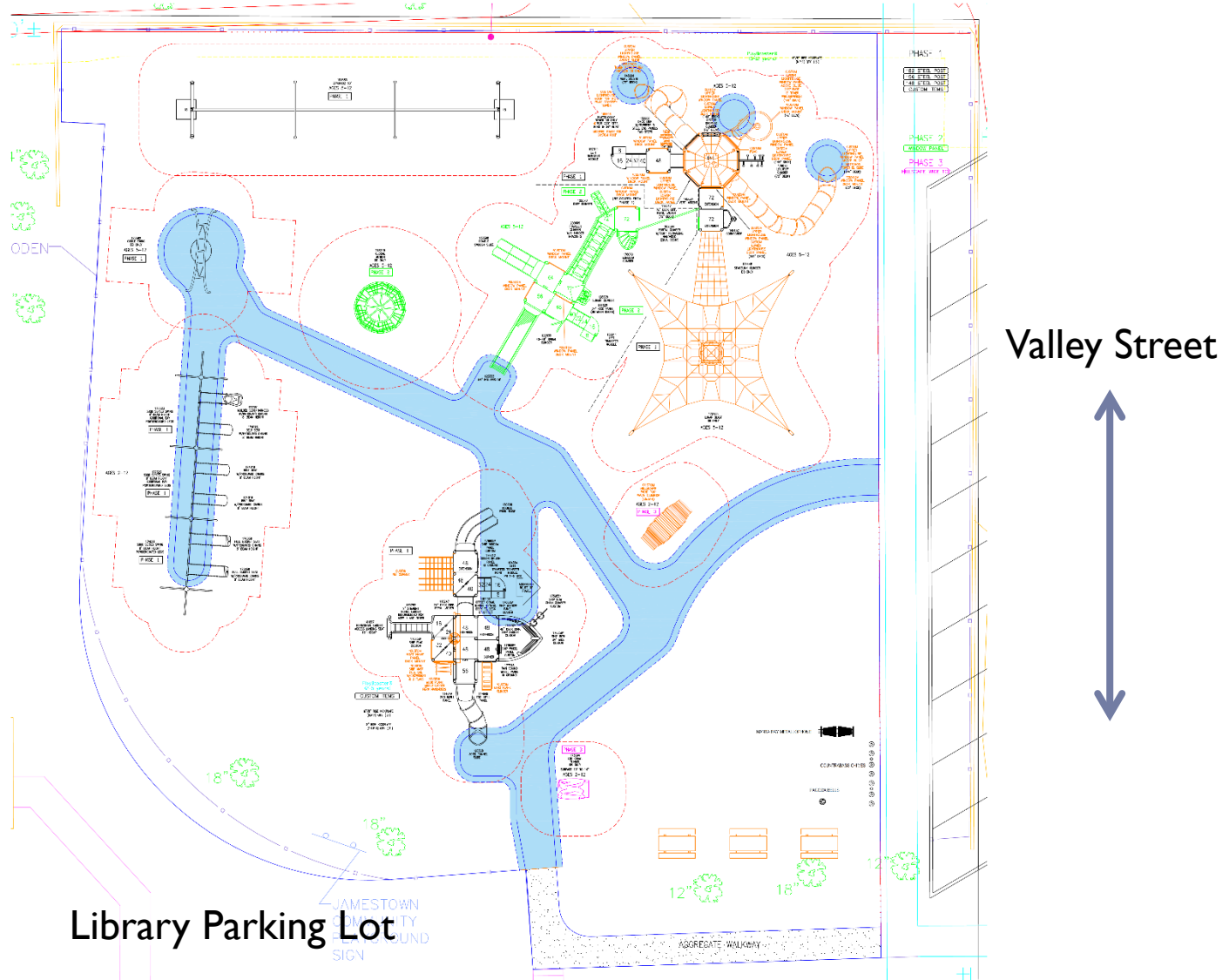
Photo Simulation (Proposed)



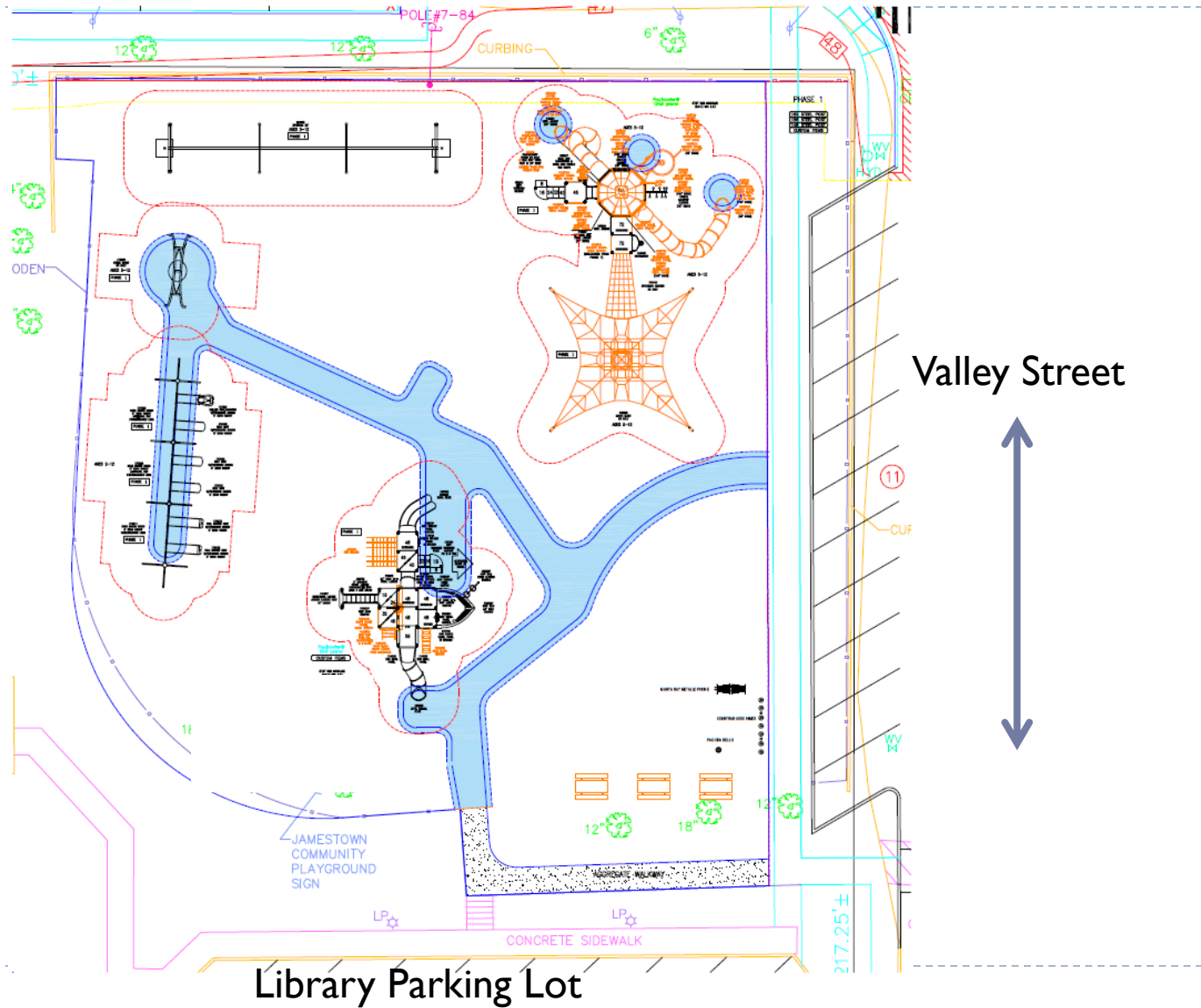
PROPOSED



Overall Master Plan - Layout



Phase I - Layout



Cost Estimate

▶ Phase I Funding

- Capital – \$85K
- DEM Grant – \$100K
- Jamestown Community Playground Fund – \$73K

Total: \$258,000

Jamestown Community Playground Initial Design Pricing	
Play Structure	Cost
FREESTANDING ELEMENTS	
50ft ZipKrooz w/Pendulum Seat	\$11,800.00
6-Place 5000 Series Swing	\$3,930.00
Oodle Swing Set	\$4,700.00
Subtotal:	\$20,430.00
LIGHTHOUSE STRUCTURE	
Phase 1 -Tower, Lunar Blast	\$111,670.00
Ryan J Bourque Ship Structure	\$62,592.00
Minus MHEC Discount	-\$11,681.52
Shipping	\$7,905.00
Play Structure Total:	\$190,915.48
SURFACING	
Wood Fiber	*Exisitng Funds \$15,000.00
Poured in Place	\$30,792.88
INSTALLATION	
1) Dig Holes, Assemble Tower	\$35,000.00
2) Pour Concrete for Tower	
3) Pour Concrete for Tower	
4) DPW Finishes remaining	
Project Total:	\$256,708.36

Phase II – Adding to the play value



- Complete Lighthouse Play Structure
- Adding multiple climbing elements
- 2 Slides & Monkey Bars
- Global Motion
- Creative Space
- Musical Play



“Creative Corner” – Artistic Play Space



The corner closest to the JAC will be utilized for musical play structures in Phase II

Cost Estimate

▶ Phase II Costs

Structures: \$93,816

**Installation: \$30,000
(estimated)**

Jamestown Community Playground Initial Design Pricing

<u>Play Structure</u>	<u>Cost</u>
FREESTANDING ELEMENTS	
Global Moiton	\$23,520.00
Single Hillscape Climber	\$7,630.00
Log Crawl Tunnel	\$5,445.00
Subtotal:	\$36,595.00
LIGHTHOUSE STRUCTURE	
Phase 2	\$43,437.00
MUSICAL INSTRUMENTS	
Manta Ray Metallophone	\$4,460.00
Contrabass Chimes	\$5,672.00
Pagoda Bells	\$3,652.00
Subtotal:	\$13,784.00
<u>Phase II Equipment Total:</u>	<u>\$93,816.00</u>

Planned Fundraising Events

- ▶ “Memory Walk” Brick Sales
 - ▶ \$125 per Brick
- ▶ Capital Fundraising Campaign
 - ▶ Fundraising Letter to Donors
 - ▶ Wheels ‘n Steel – 10/08/17
 - ▶ Neon Night 5K – 11/10/17



COME TOUCH SOME BIG WHEELS'N STEEL!!
BACKHOES ~ EXCAVATORS ~ COAST GUARD BOAT ~ FIRE TRUCKS & MUCH MORE



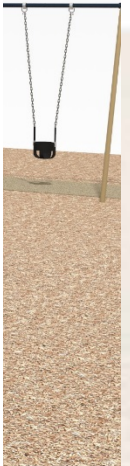
Request for Phase 1 Approval



*Custom products are s



PROPOSED



ights Reserved.

